

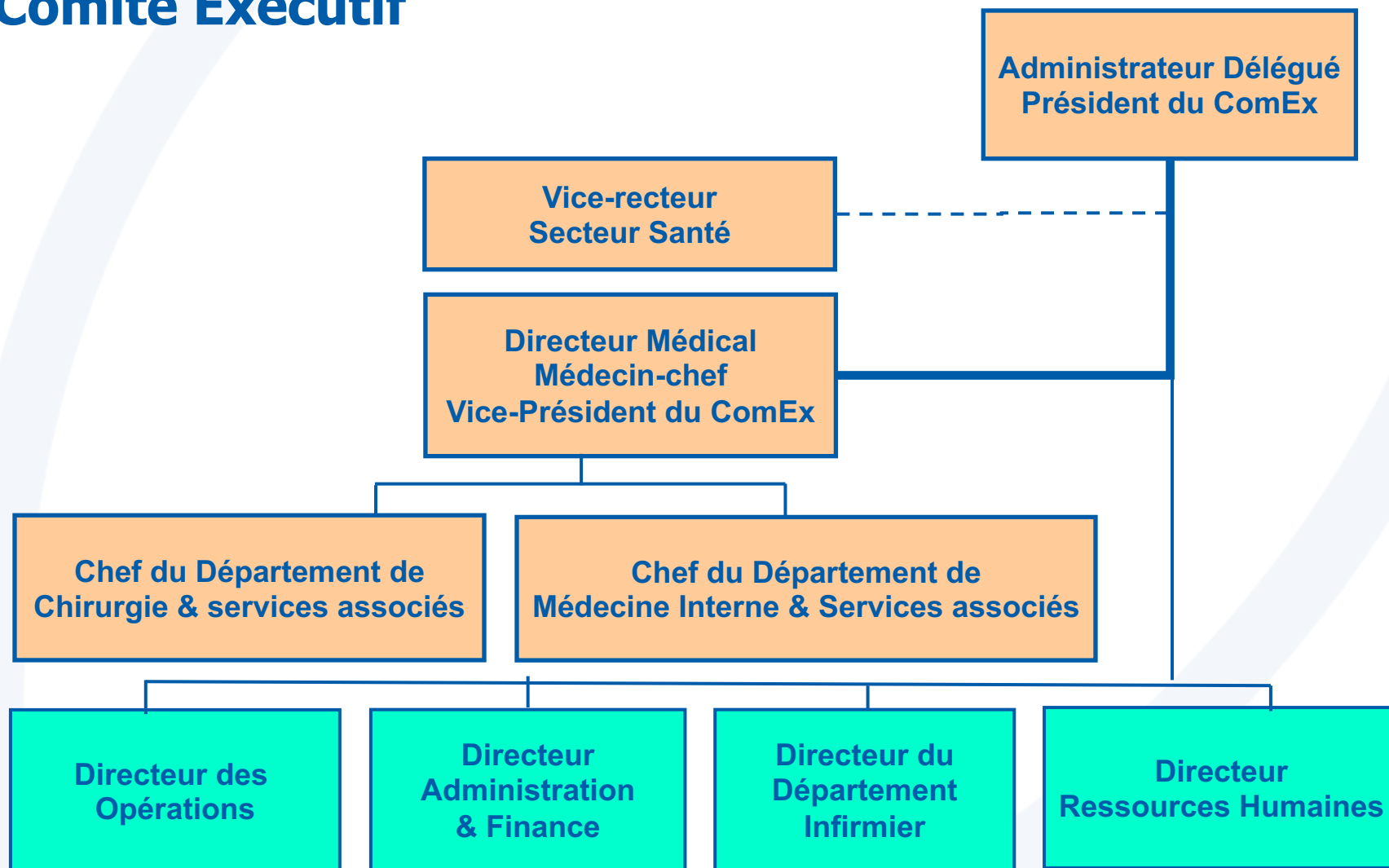
# Organigramme des Cliniques universitaires Saint-Luc

Date d'application : Février 2023

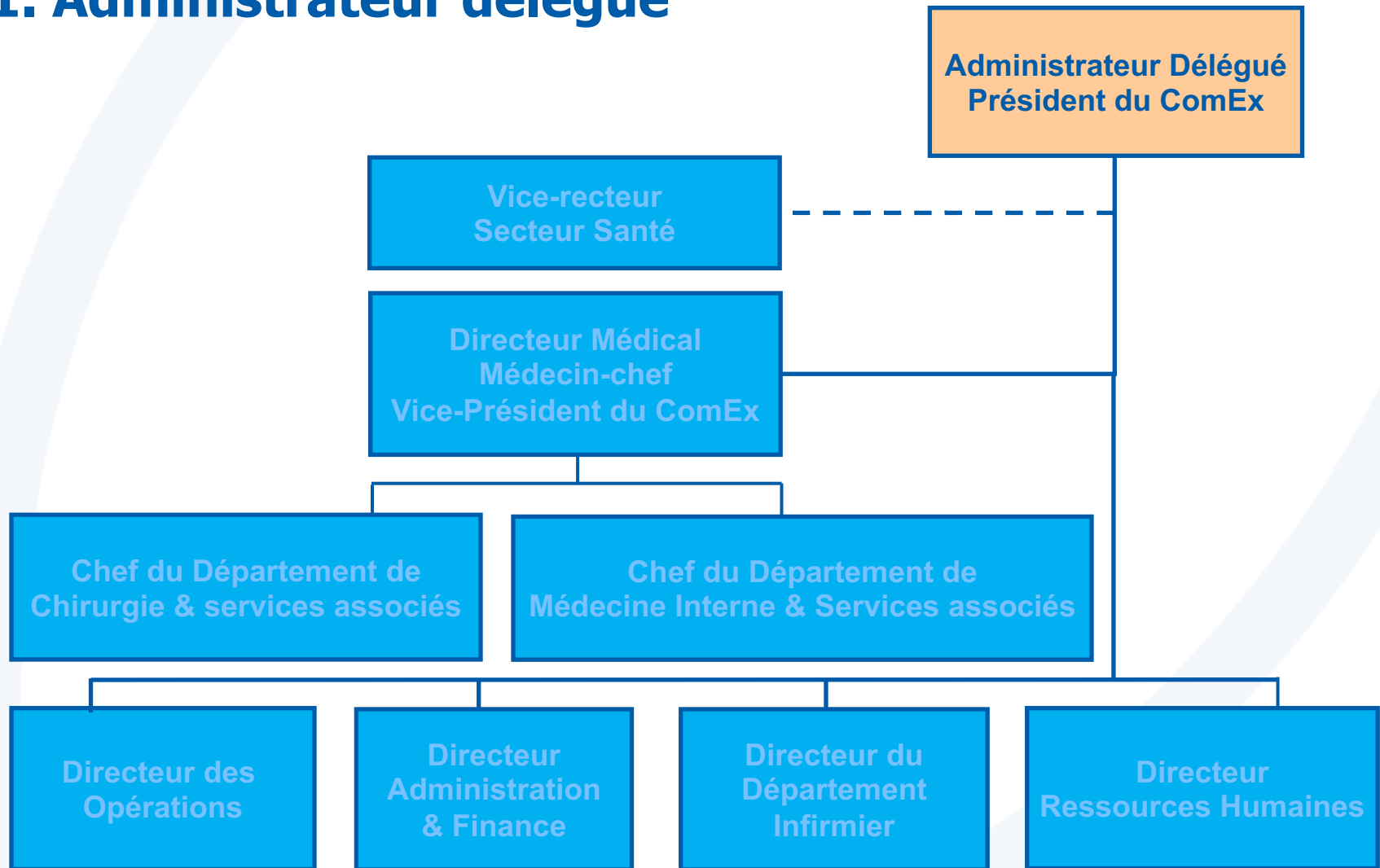
DRH-DSQ-205 20.0



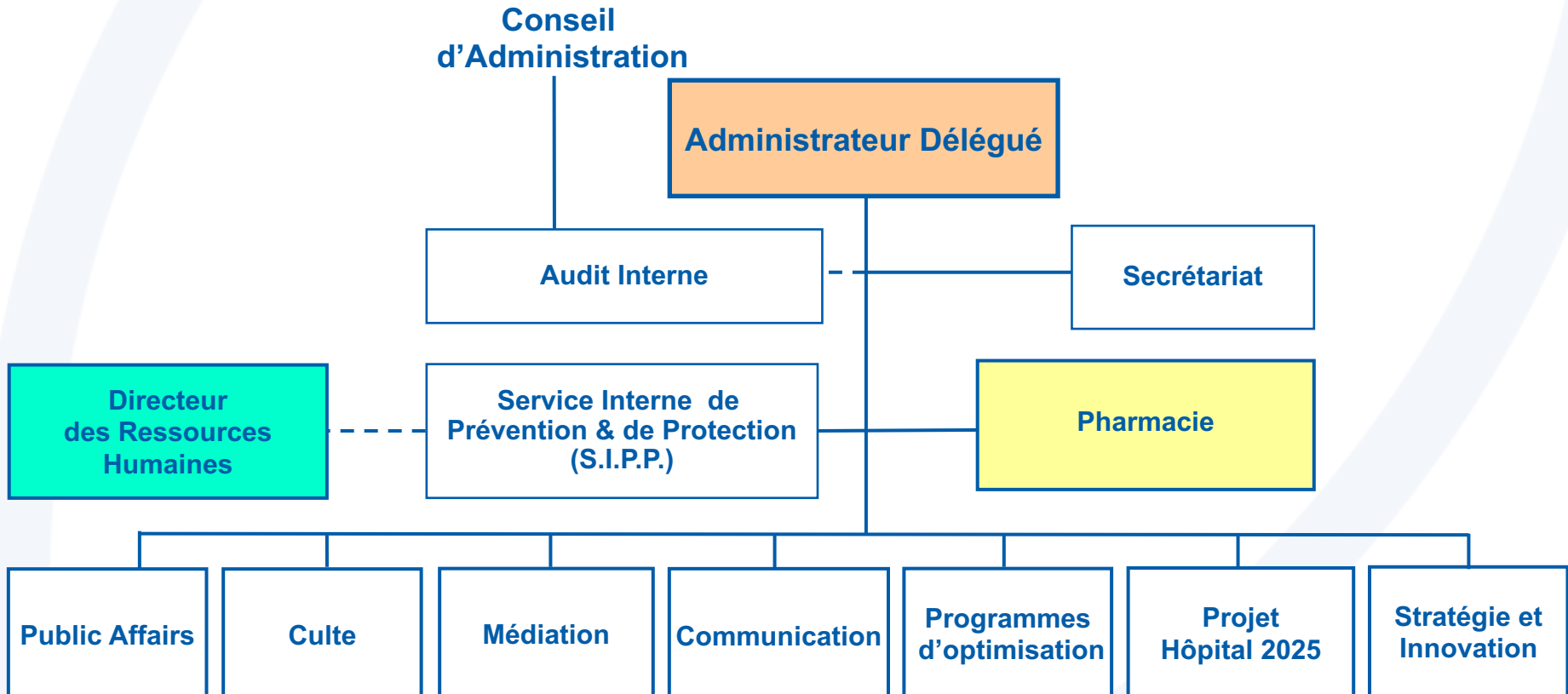
# Comité Exécutif



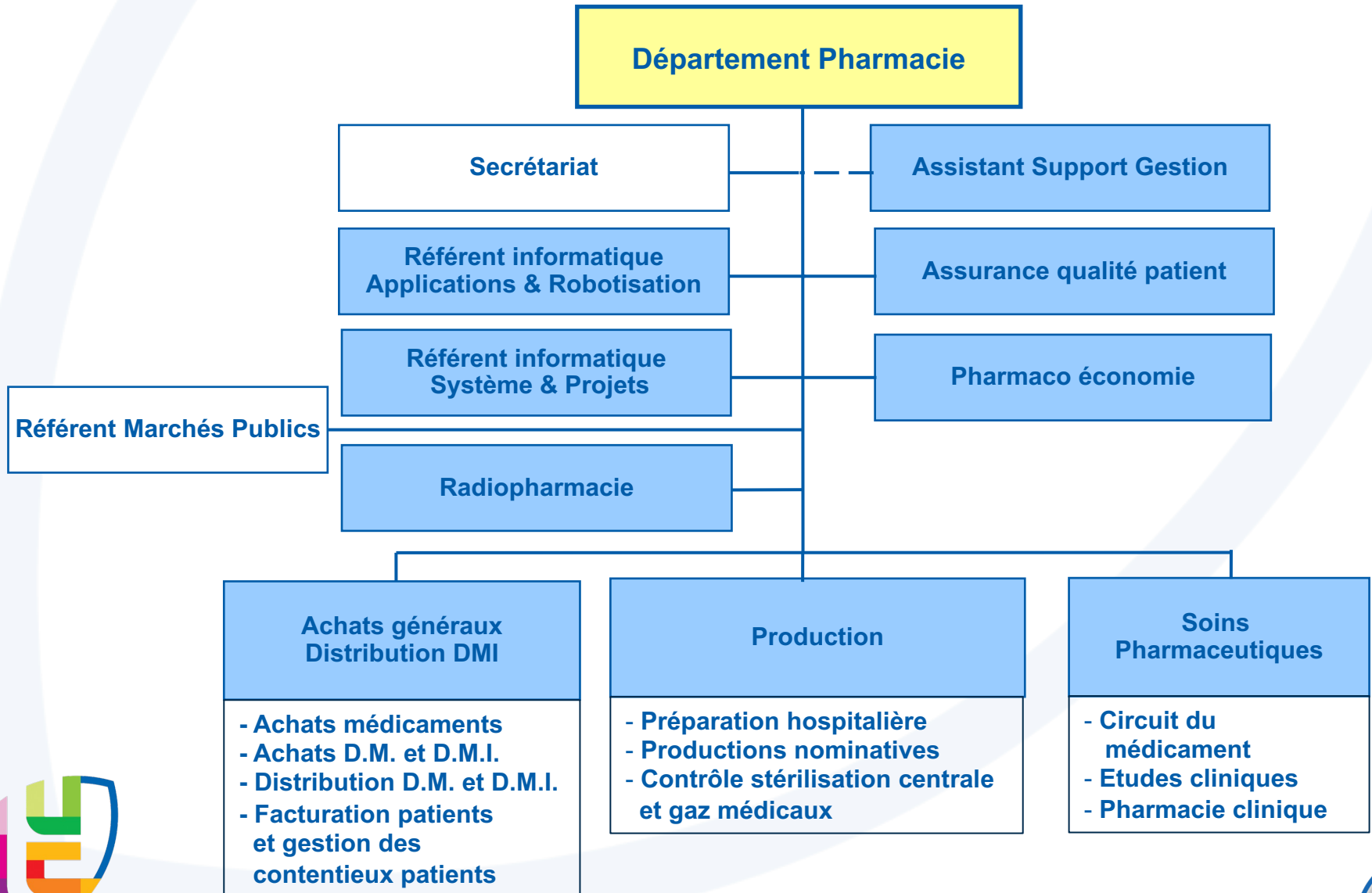
# 1. Administrateur délégué



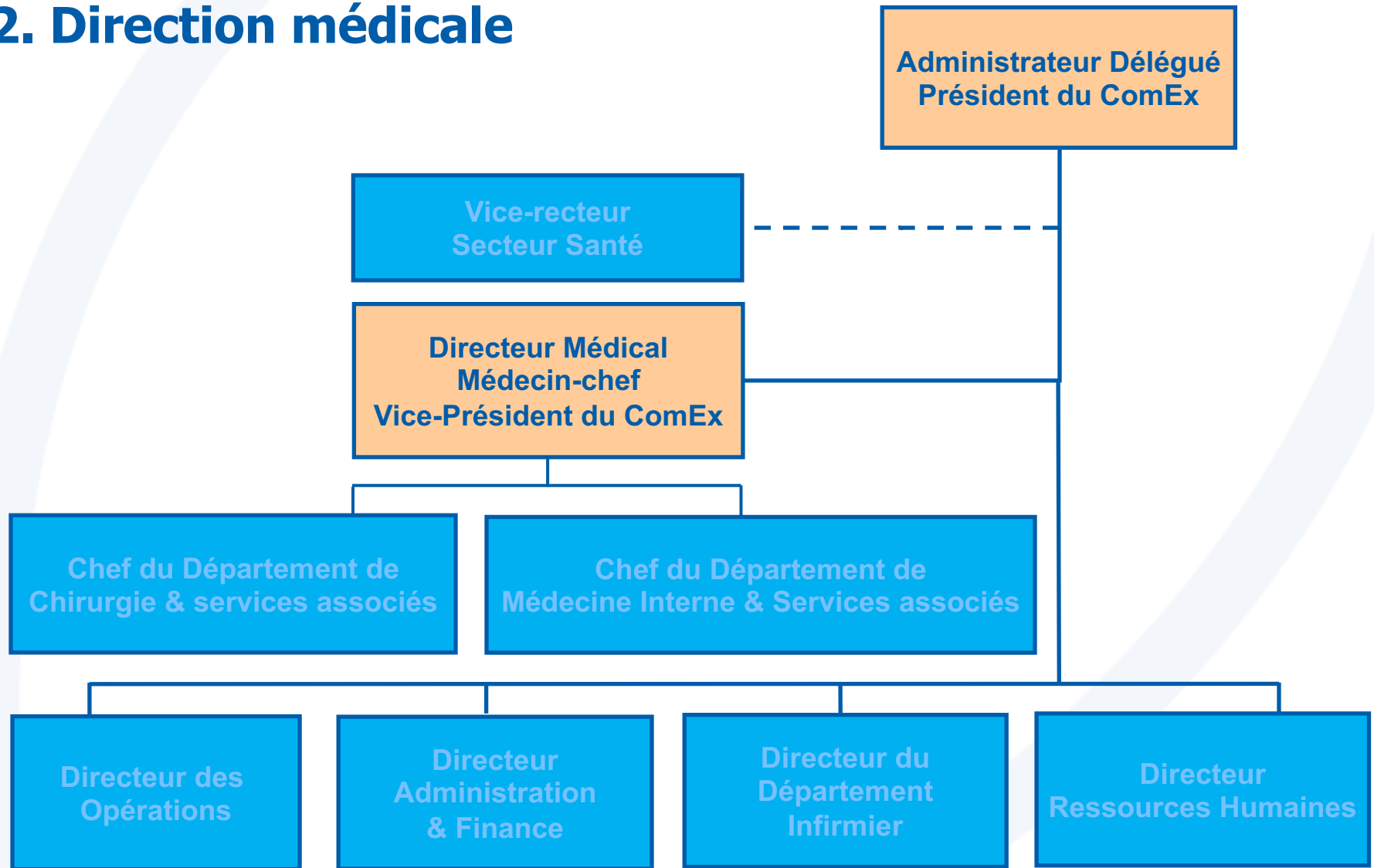
# 1. Administrateur délégué



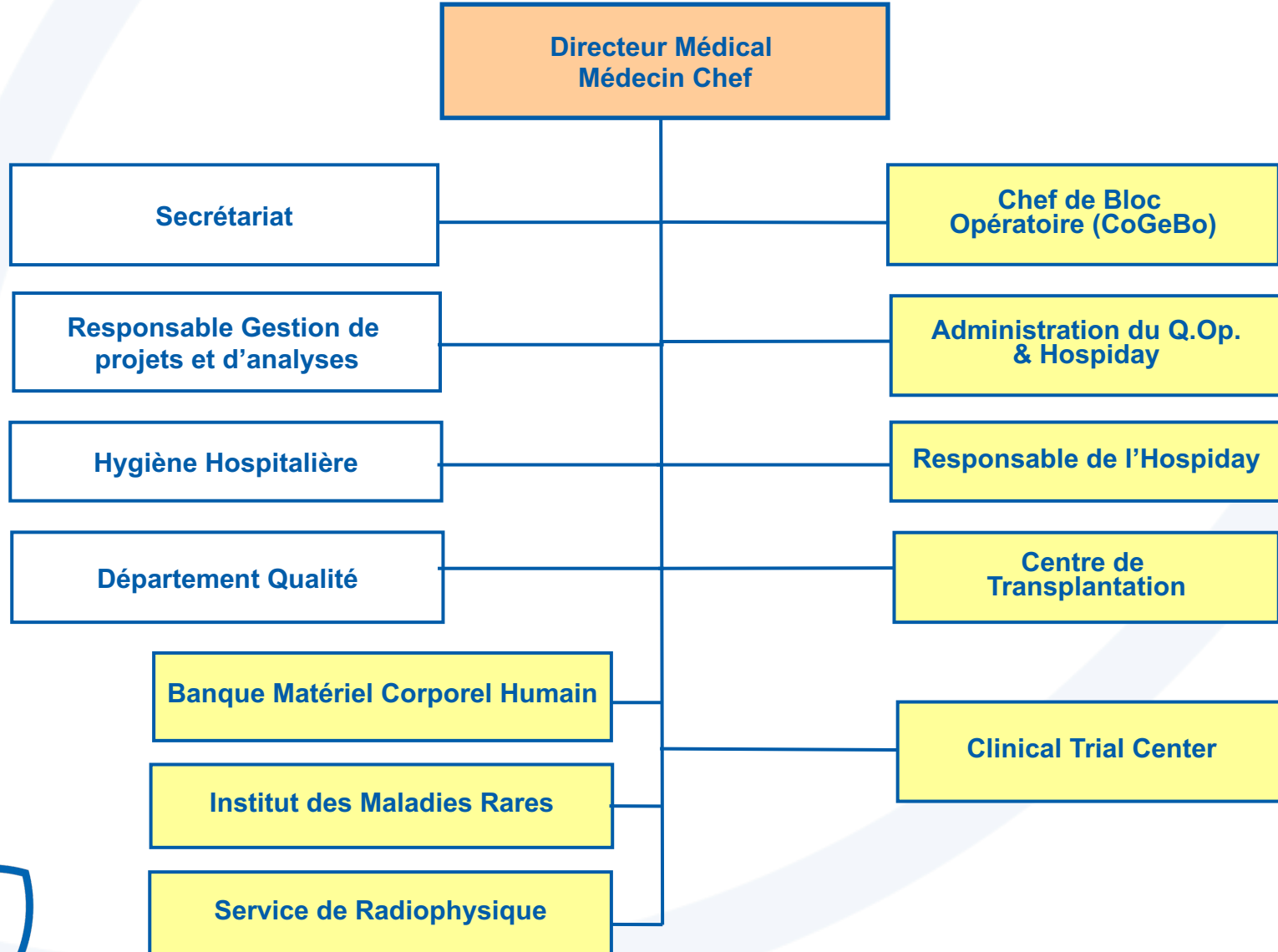
# 1. Administrateur délégué – Département Pharmacie



## 2. Direction médicale

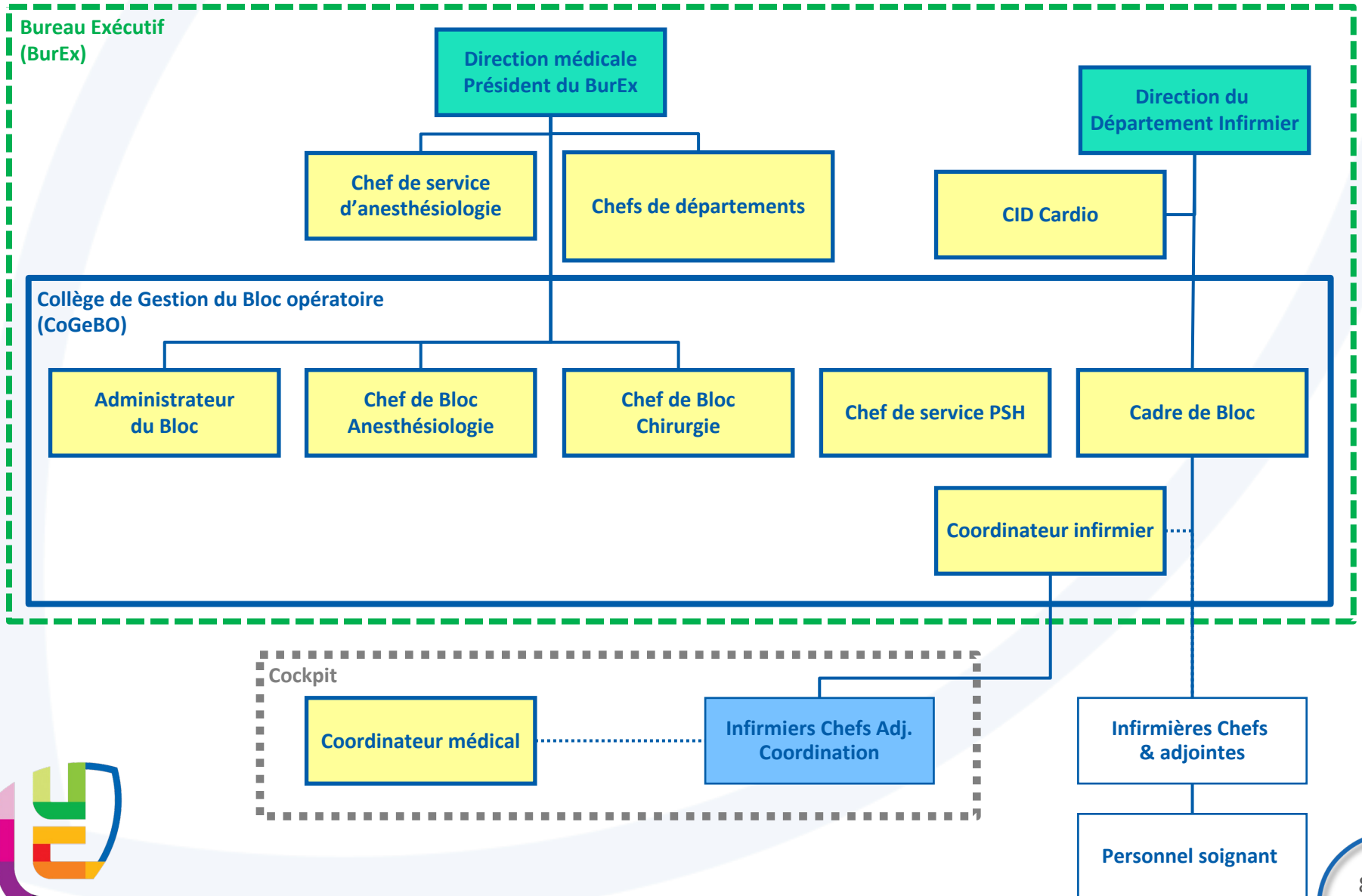


## 2. Direction médicale



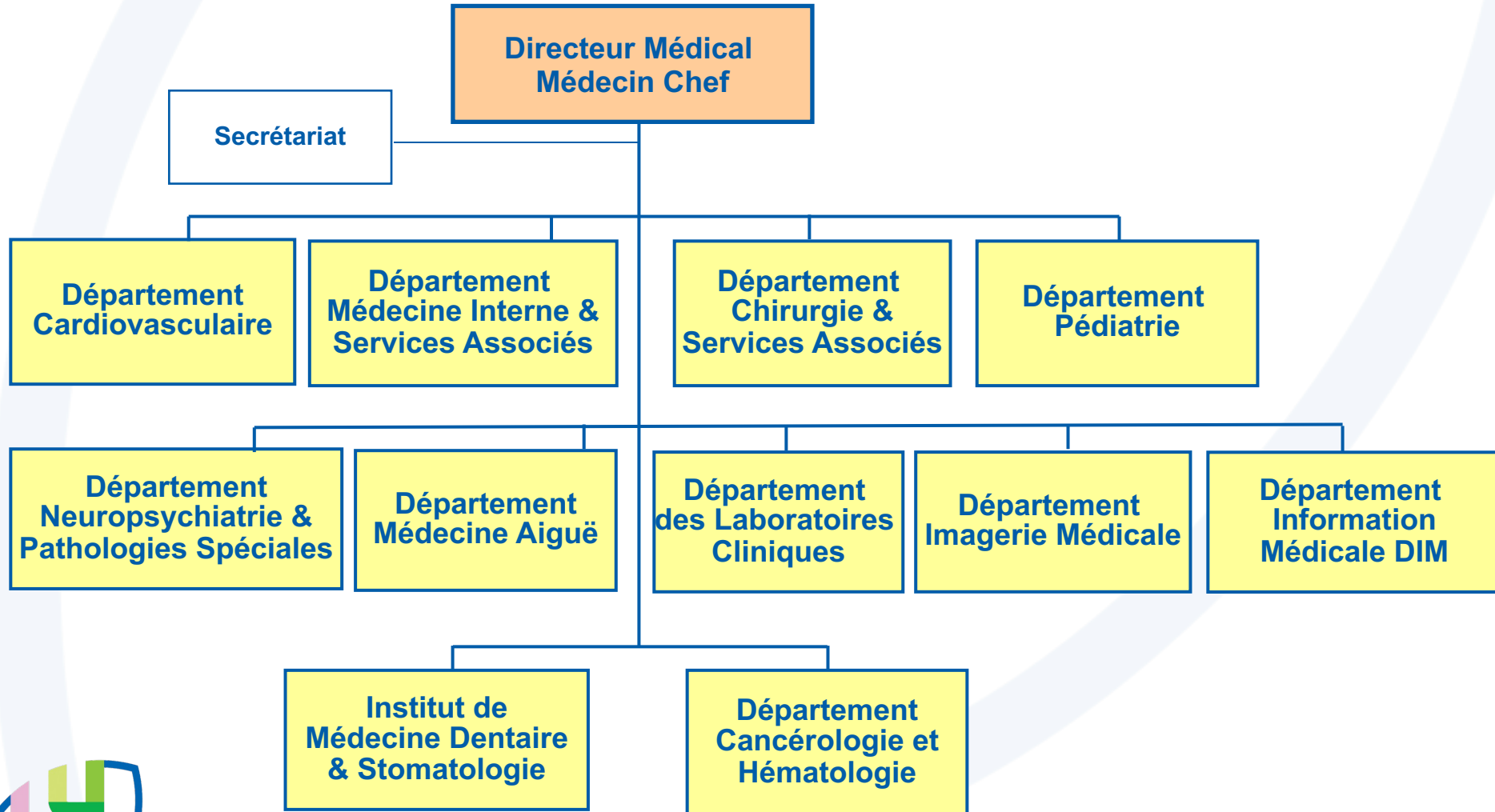
# 2. Direction Médicale (2)

## Quartier Opératoire

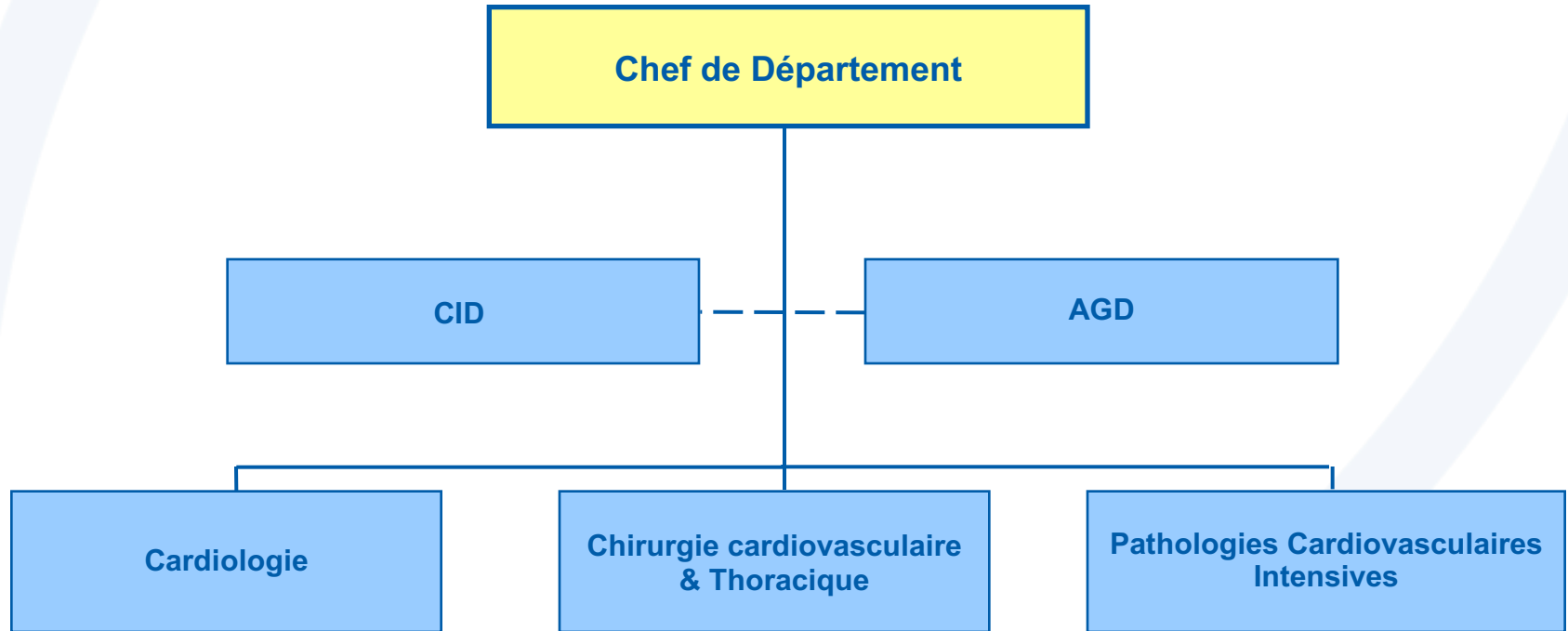




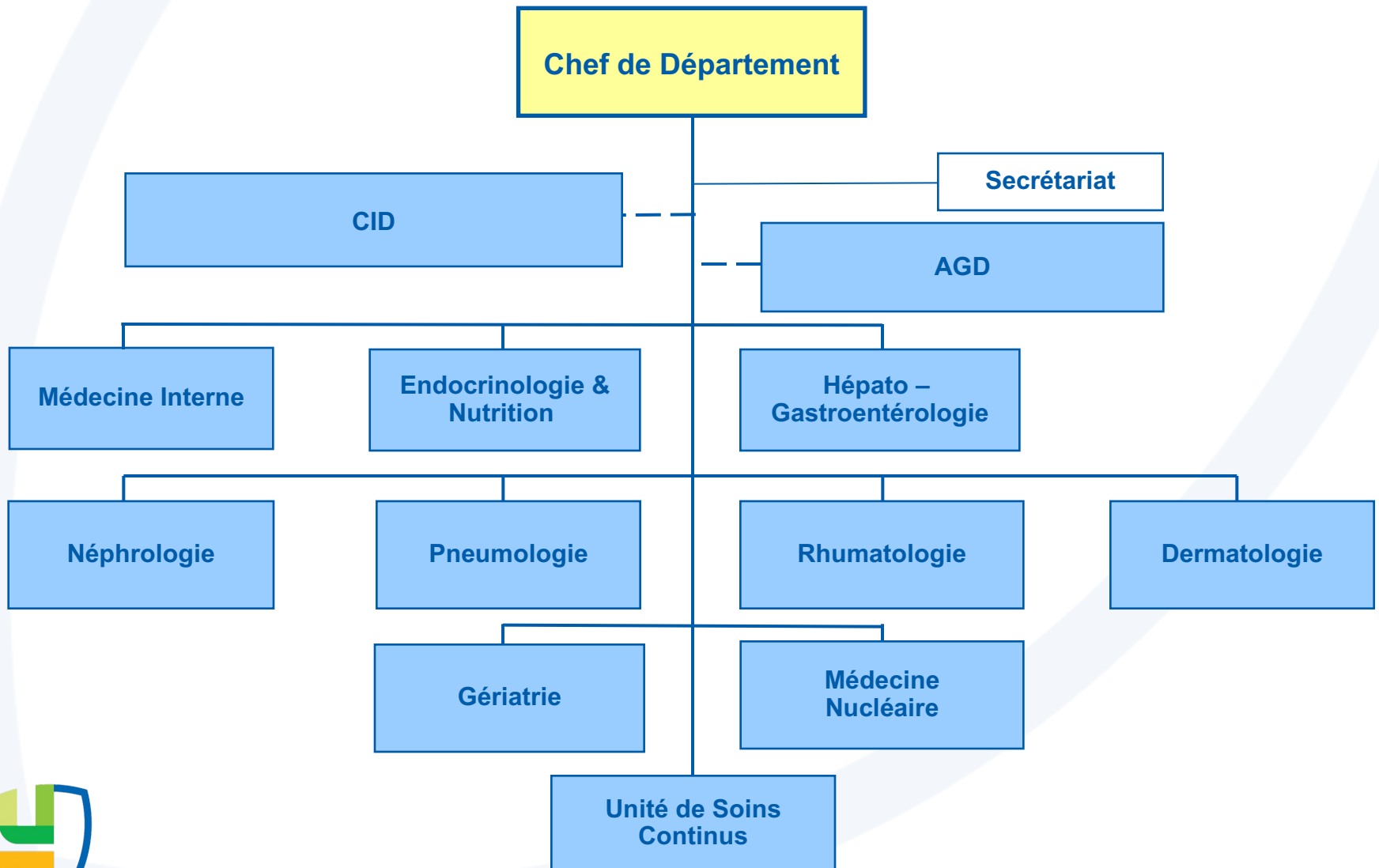
## 2. Direction Médicale (2) – Départements médicaux



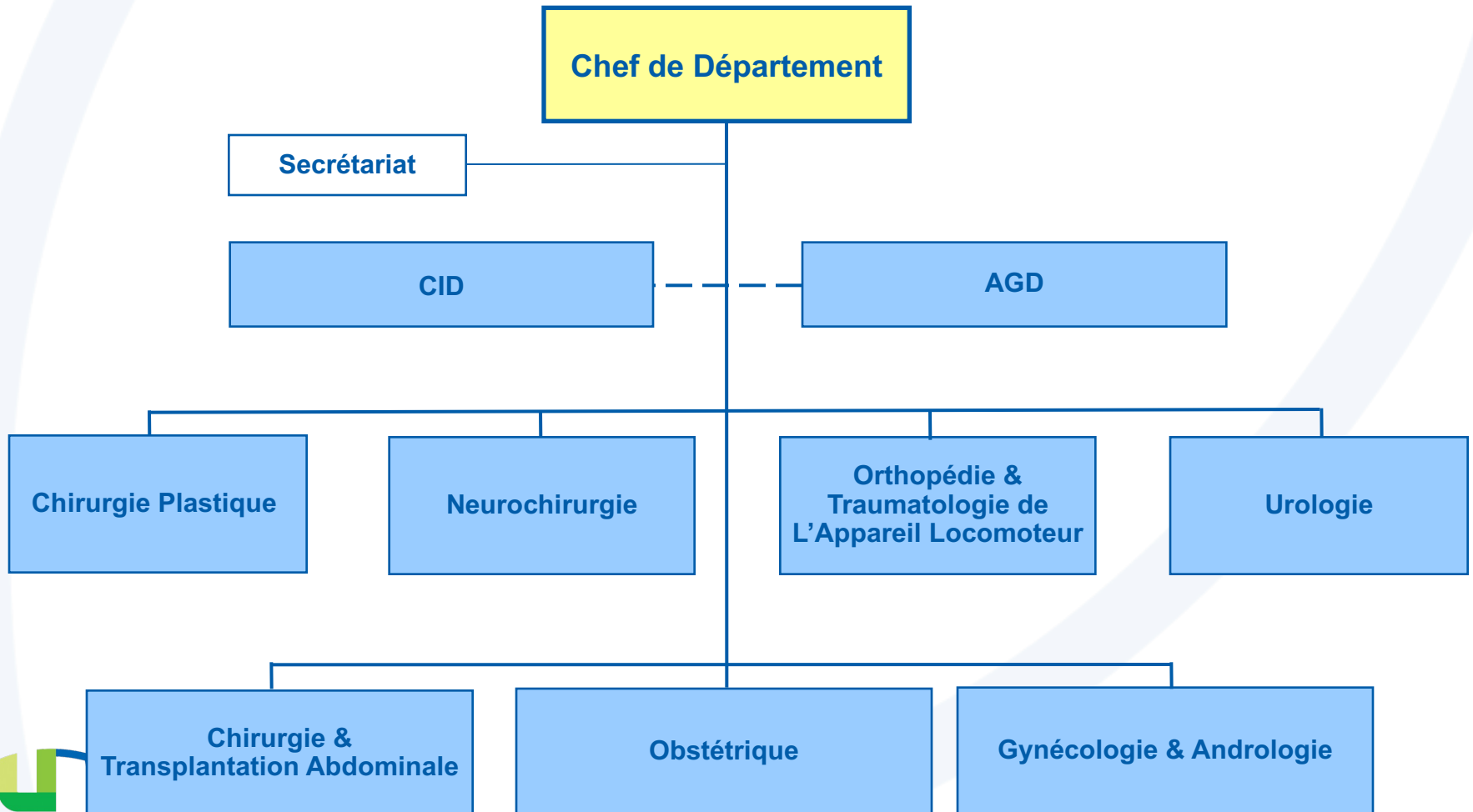
## 2. Direction Médicale (2) – Département Cardiovasculaire



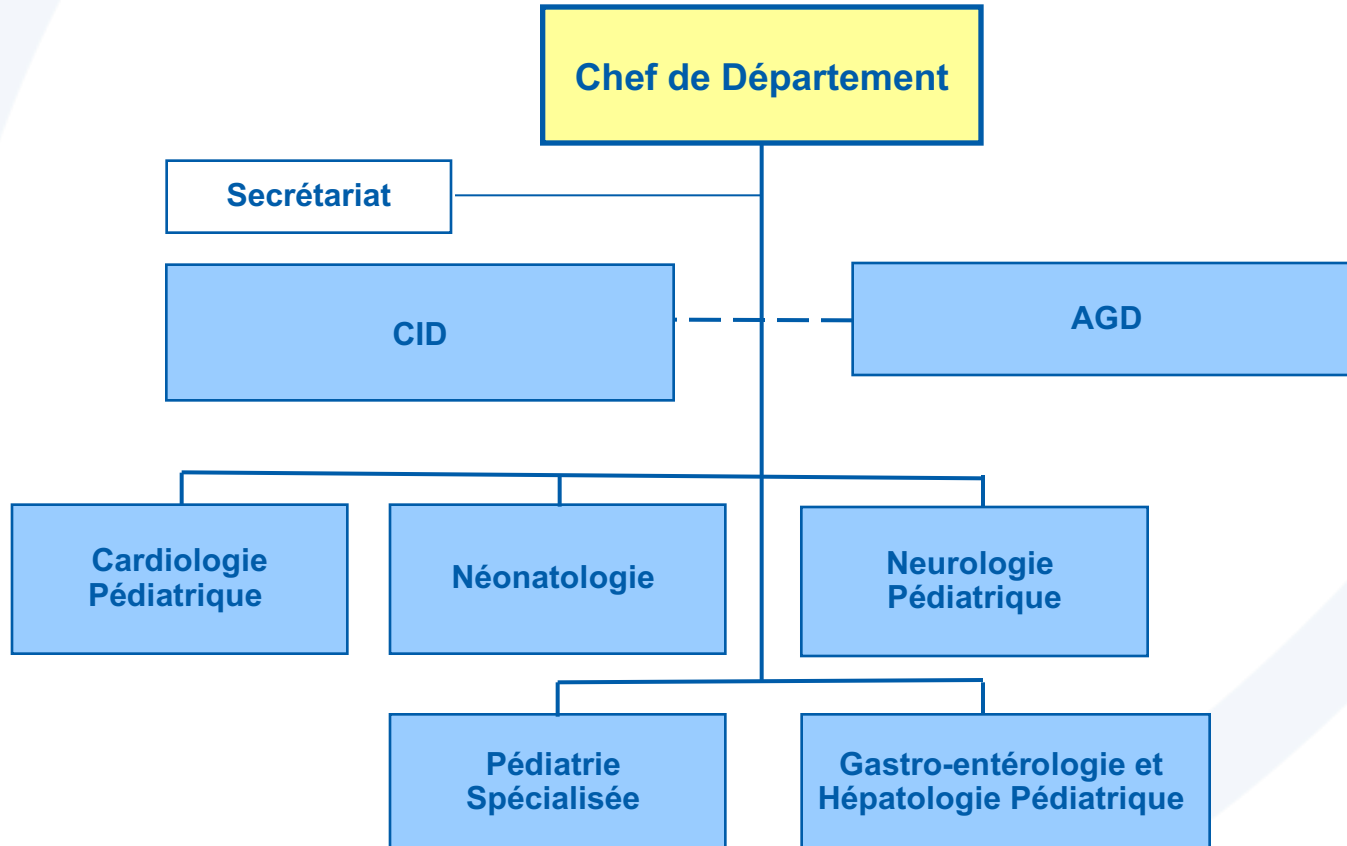
## 2. Direction Médicale (2) – Département Médecine Interne & Services Associés



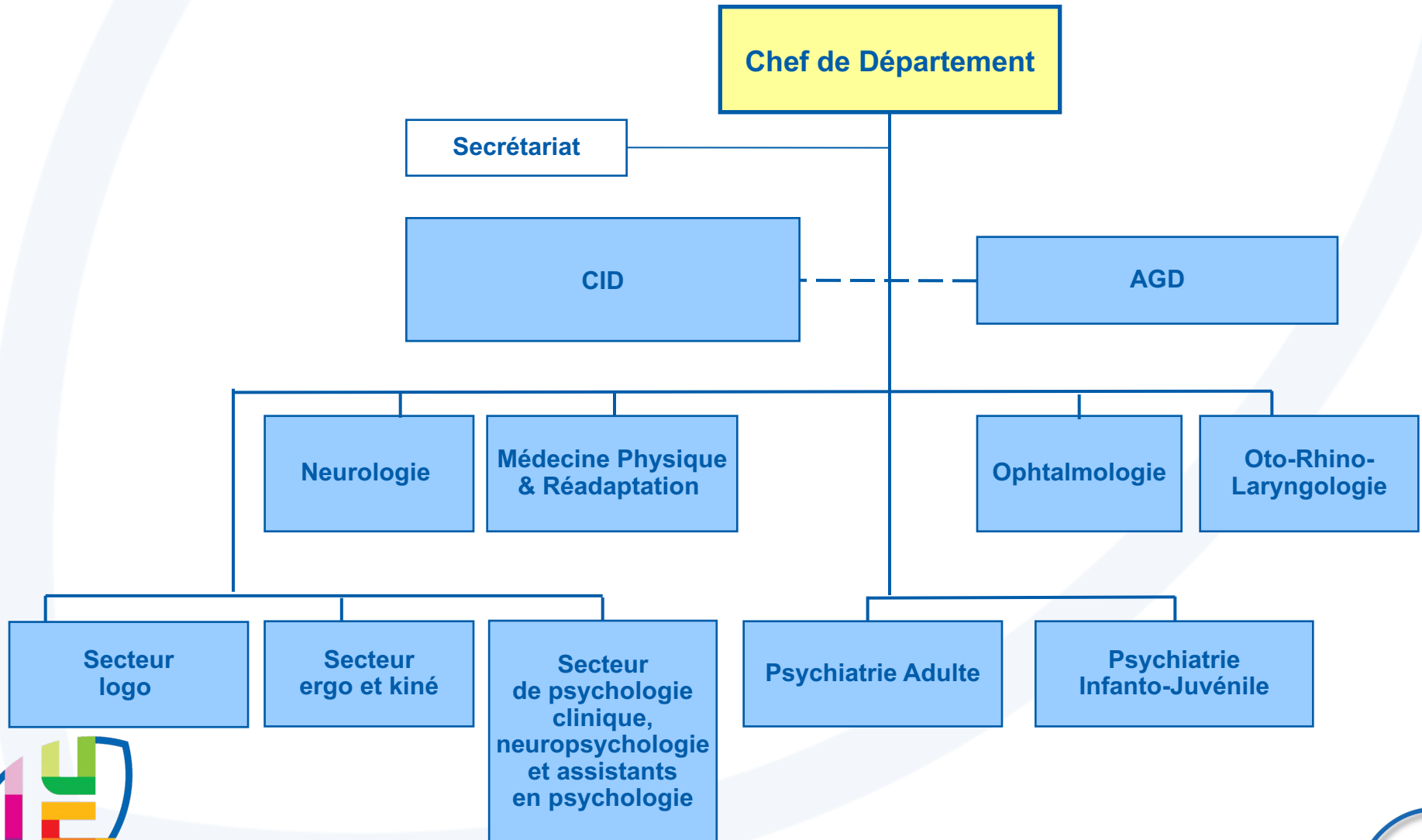
## 2. Direction Médicale (2) – Département de Chirurgie & Services Associés



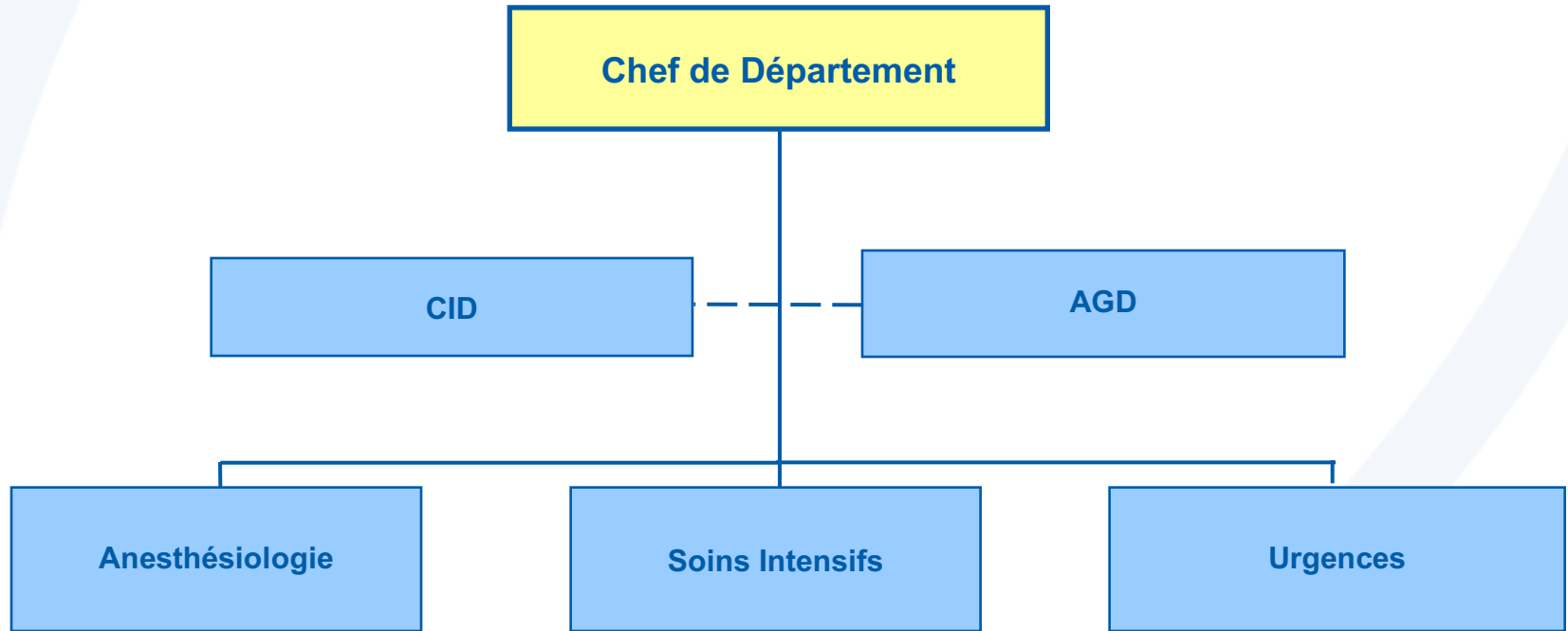
## 2. Direction Médicale (2) – Département de Pédiatrie



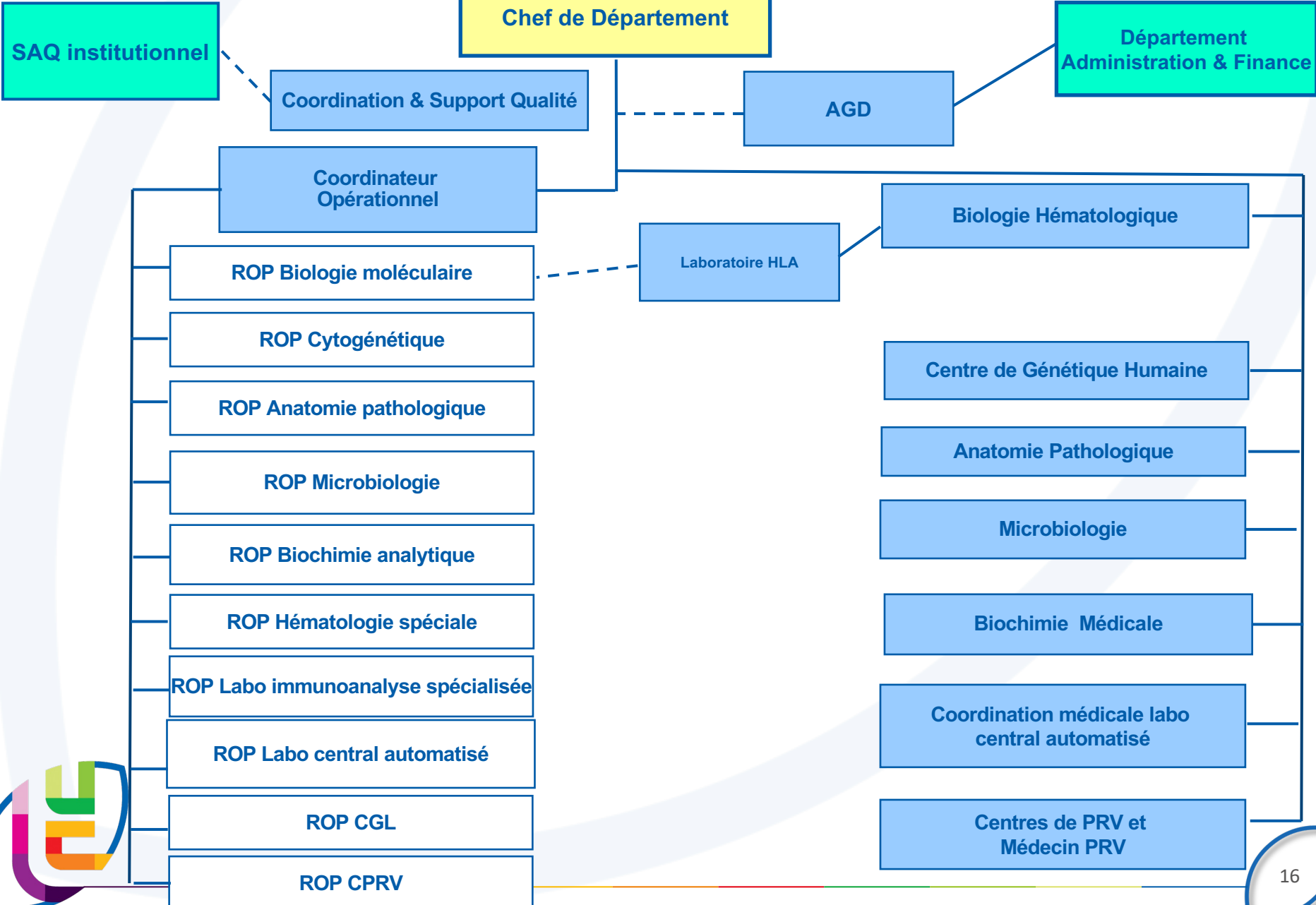
## 2. Direction Médicale (2) – Département de Neuropsychiatrie & Pathologies Spéciales



## 2. Direction Médicale (2) – Département de Médecine Aiguë

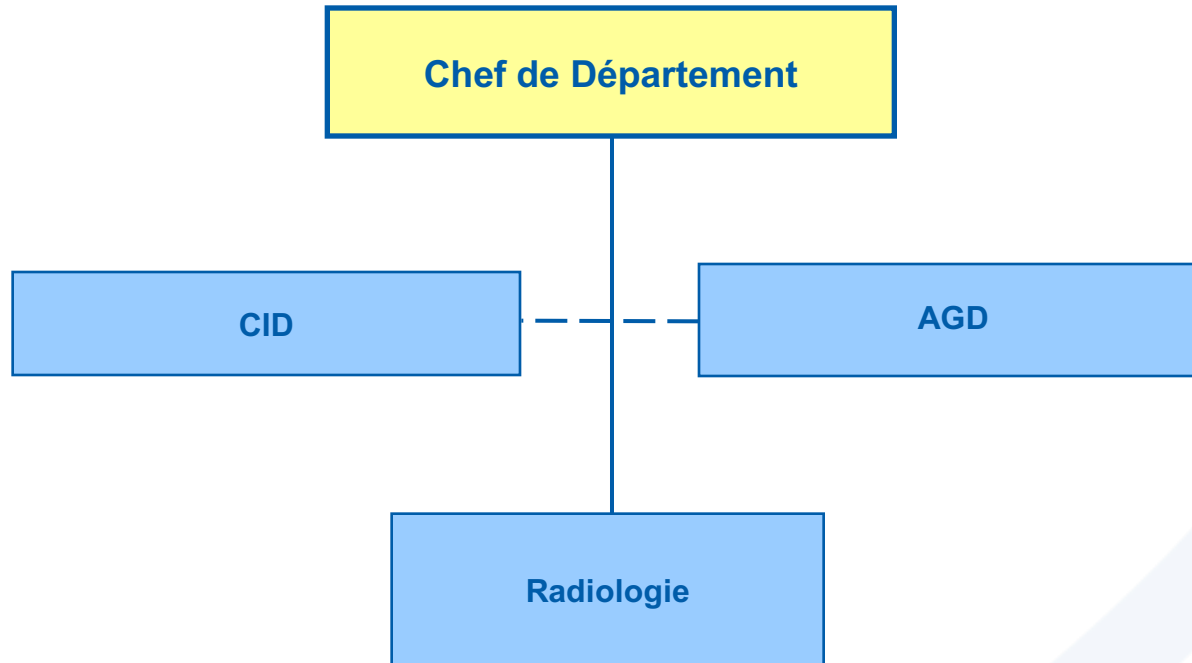


# 2. Direction Médicale (2) – Département des Laboratoires Cliniques

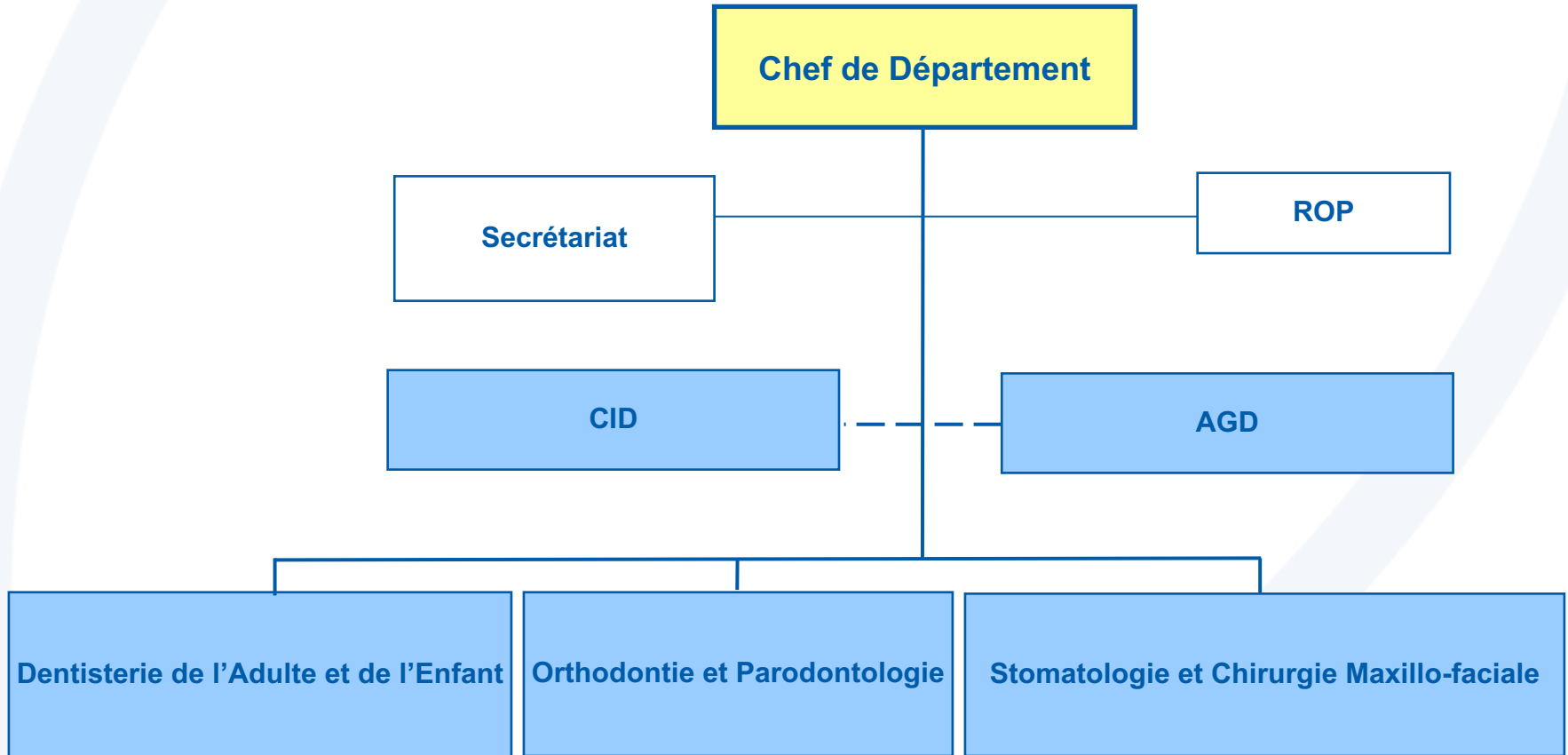




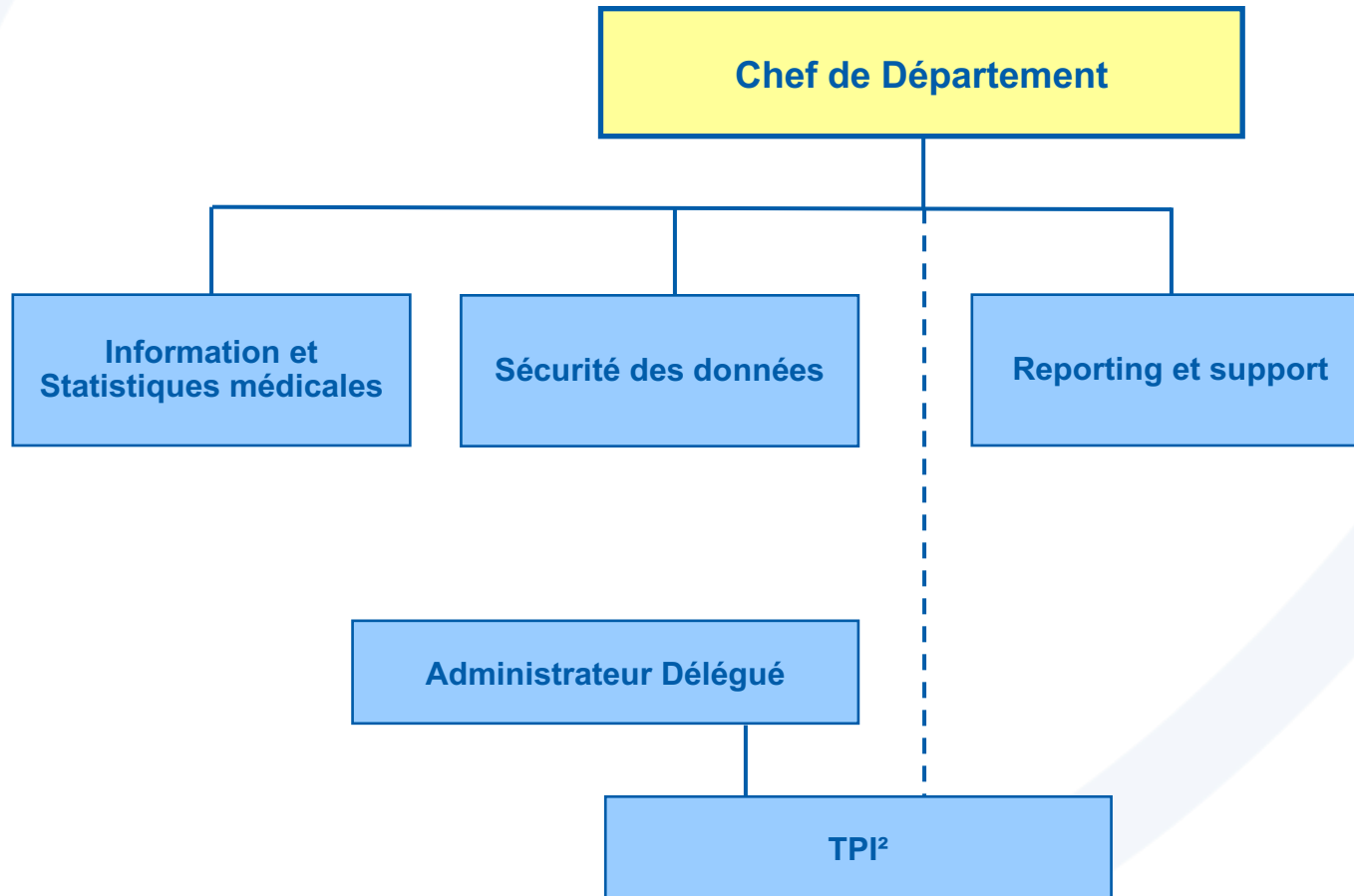
## 2. Direction Médicale (2) – Département d'Imagerie Médicale



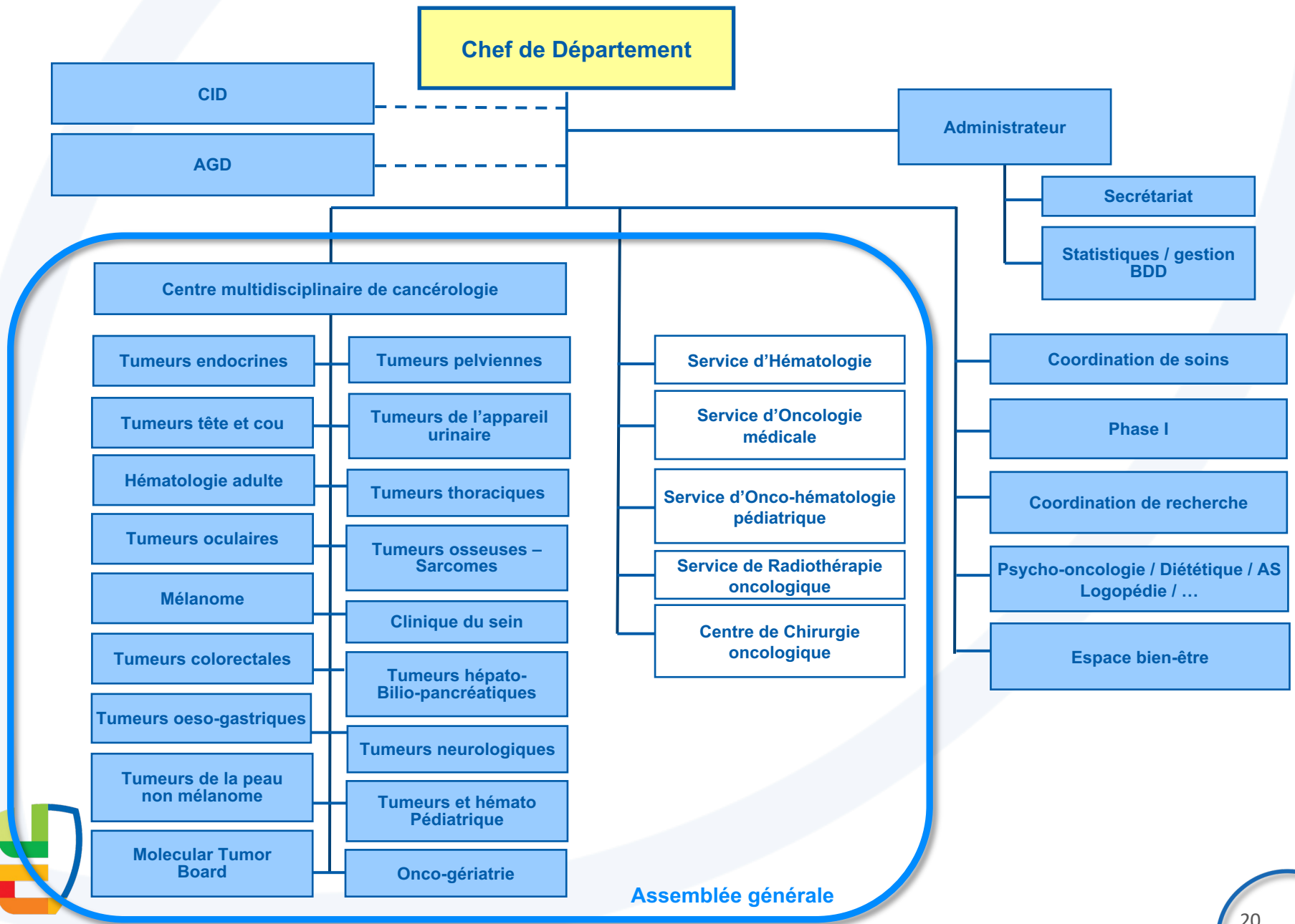
## 2. Direction Médicale (2) – Institut de Médecine Dentaire & Stomatologie



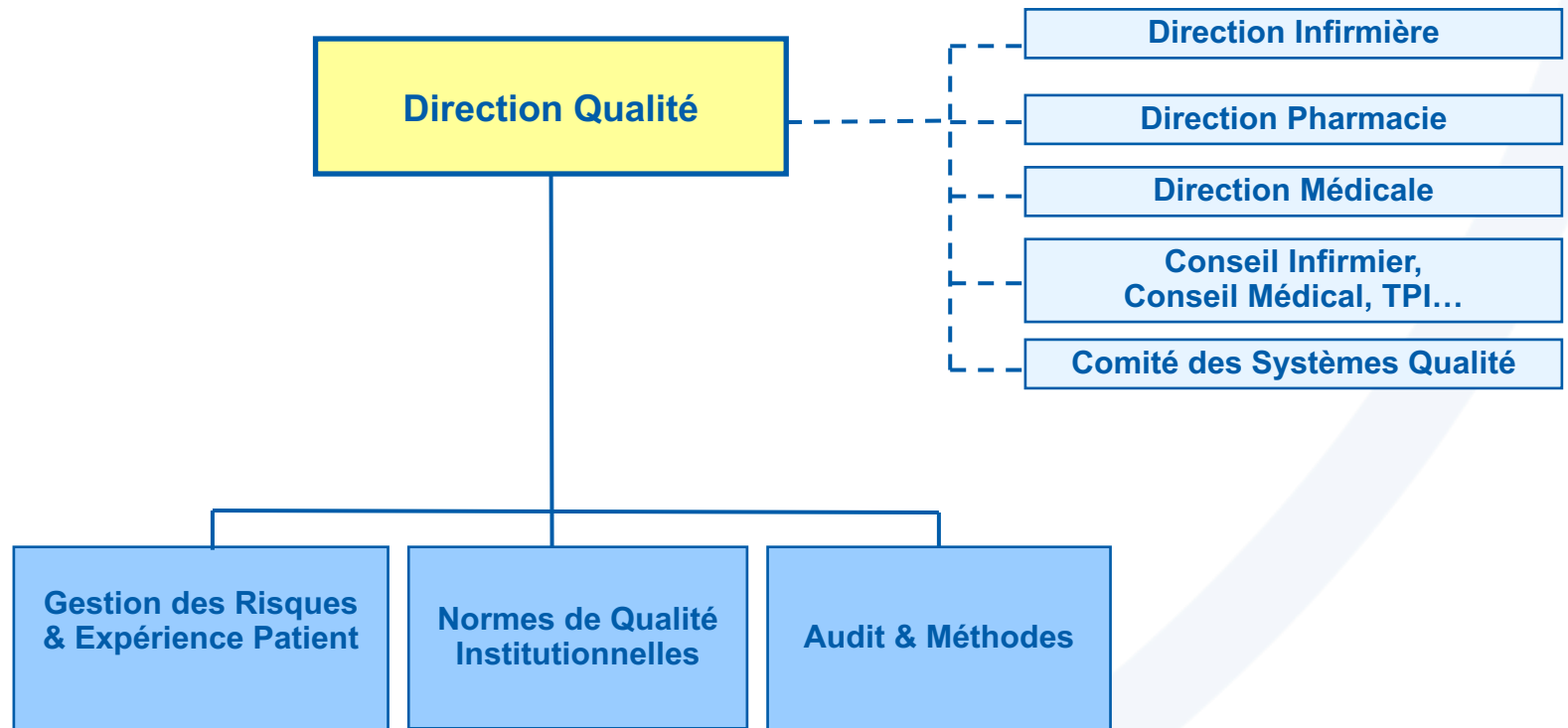
## 2. Direction Médicale (2) – Département Information Médicale DIM



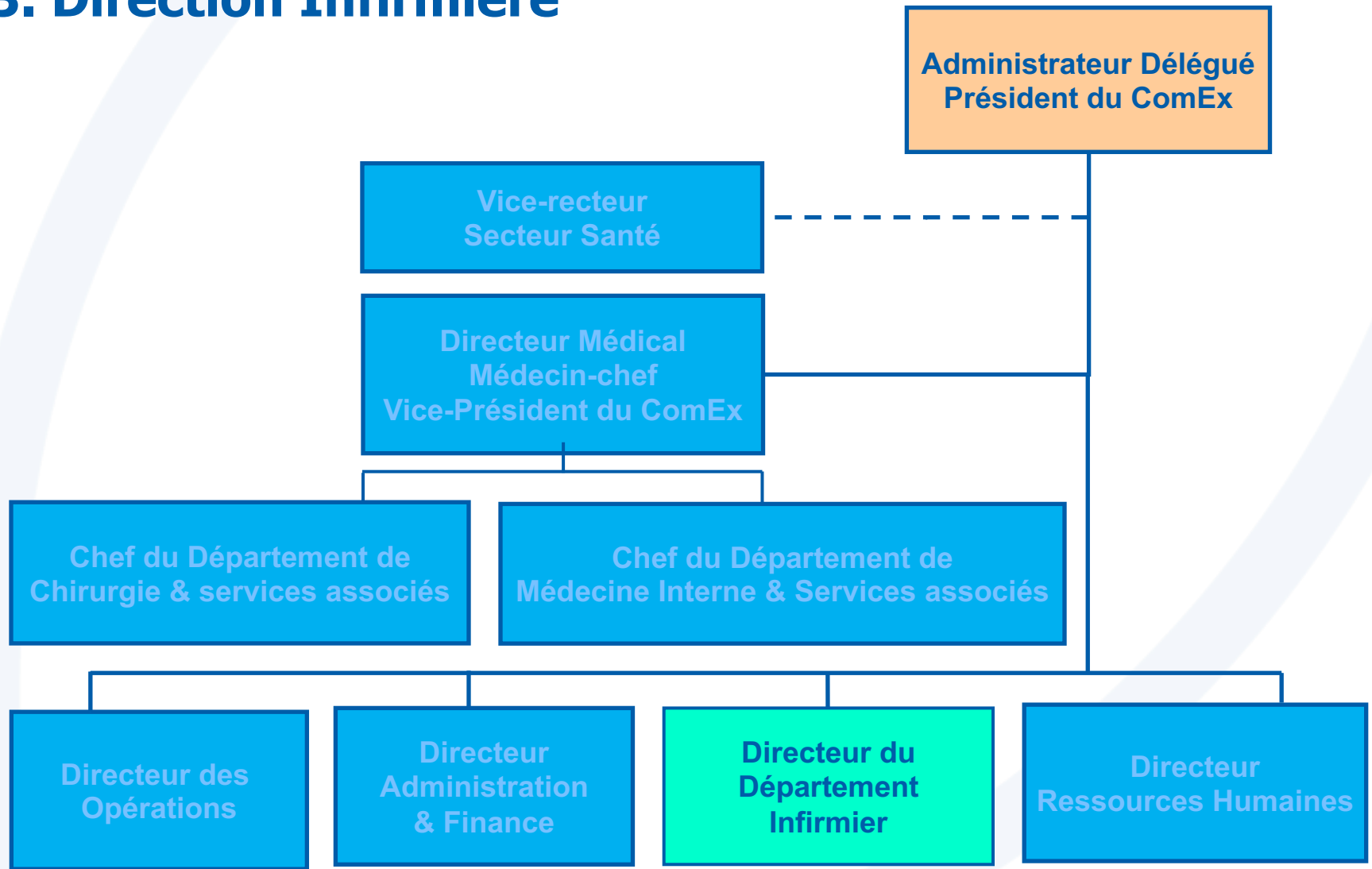
# 2. Direction Médicale (2) - Département Cancérologie et Hématologie



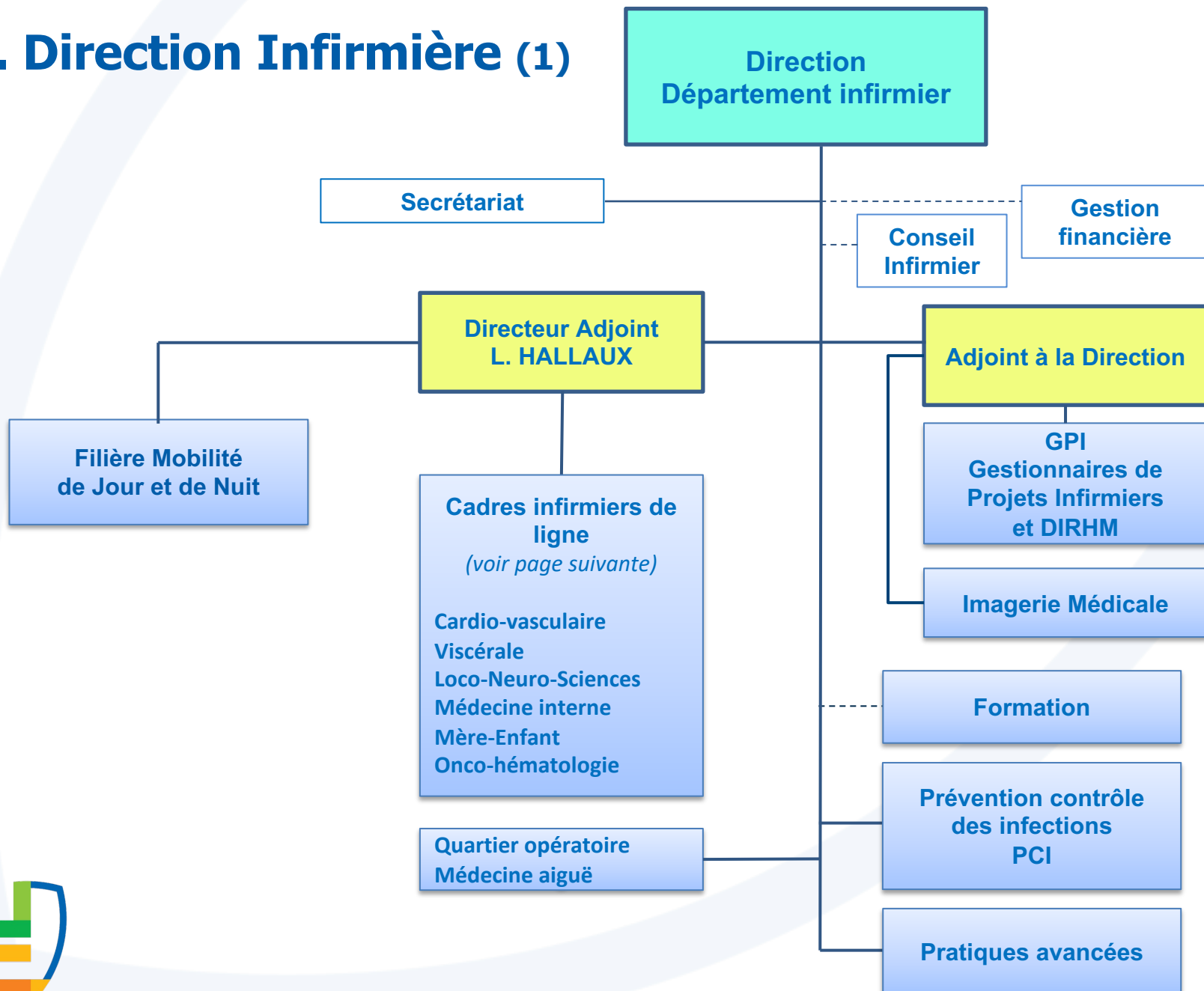
## 2. Direction Médicale (2) – Département Qualité



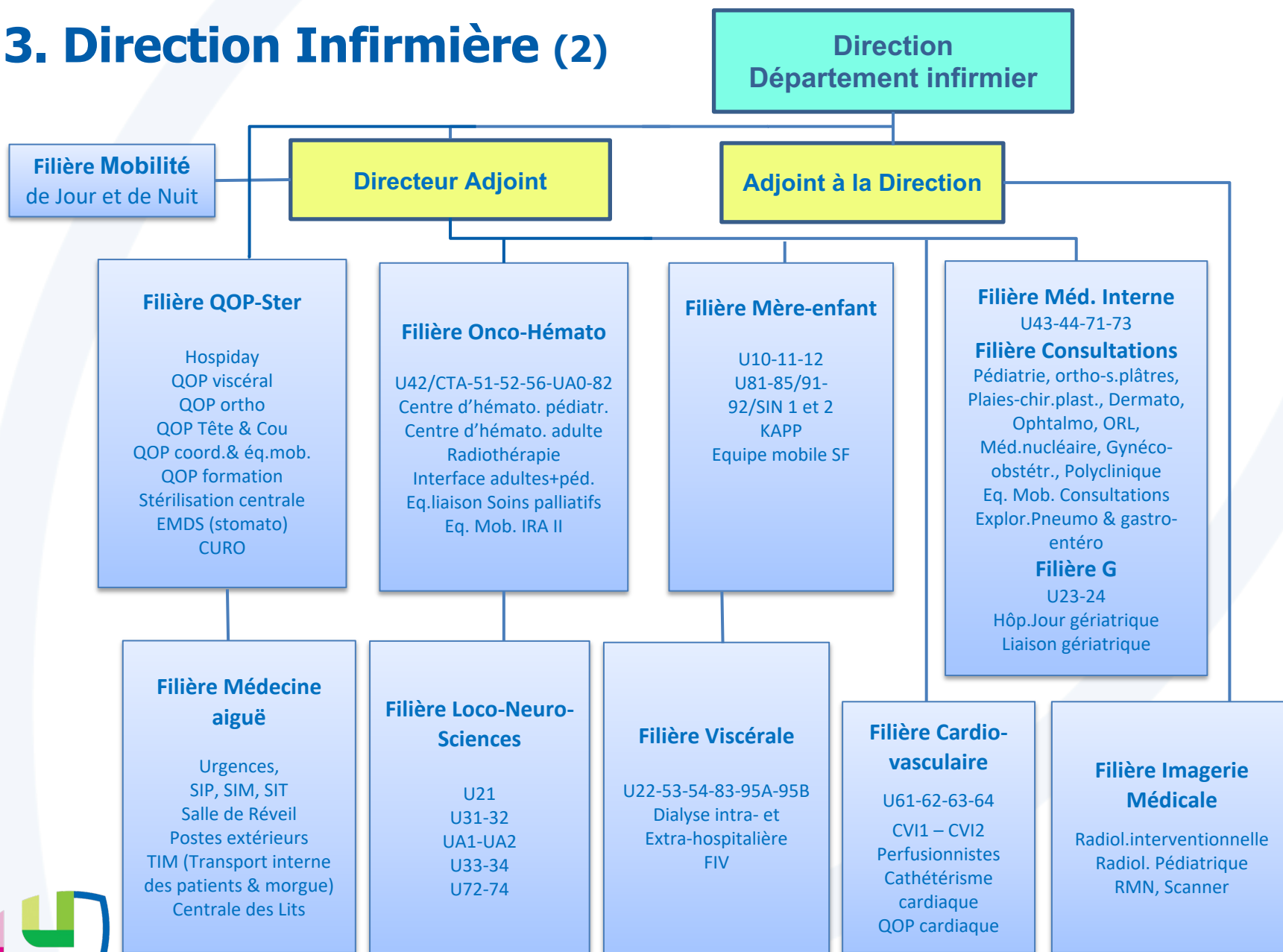
### 3. Direction Infirmière



### 3. Direction Infirmière (1)

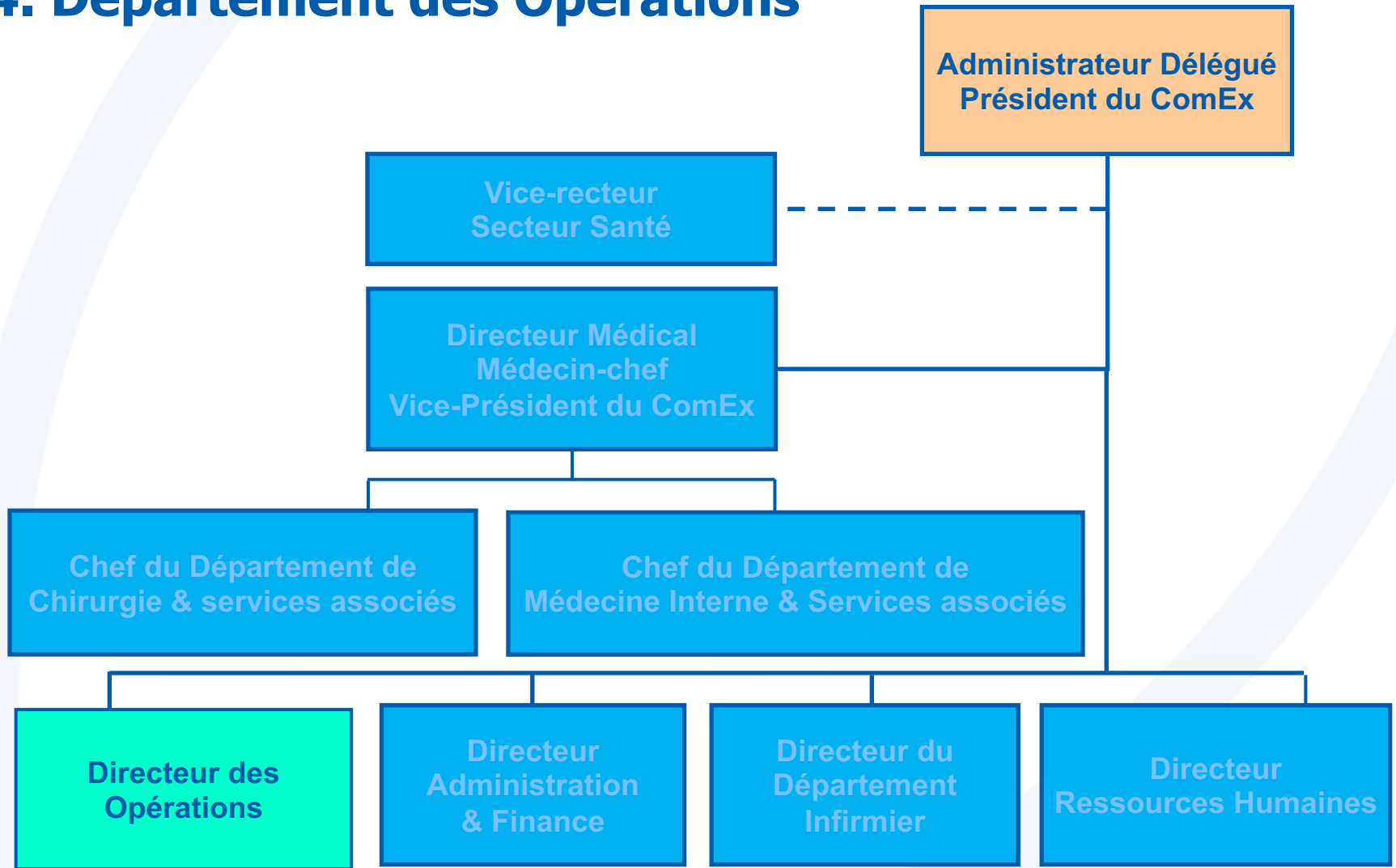


# 3. Direction Infirmière (2)

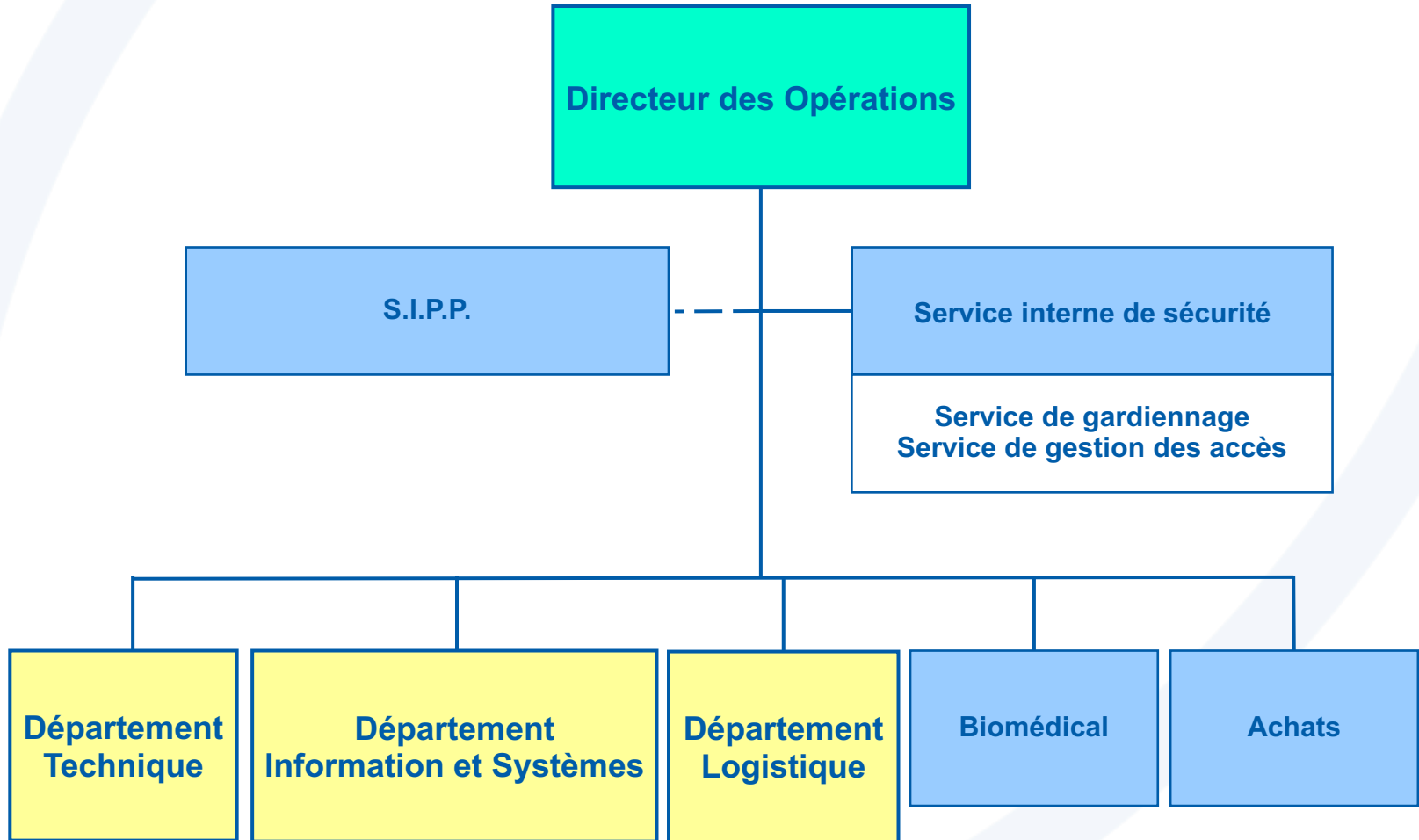




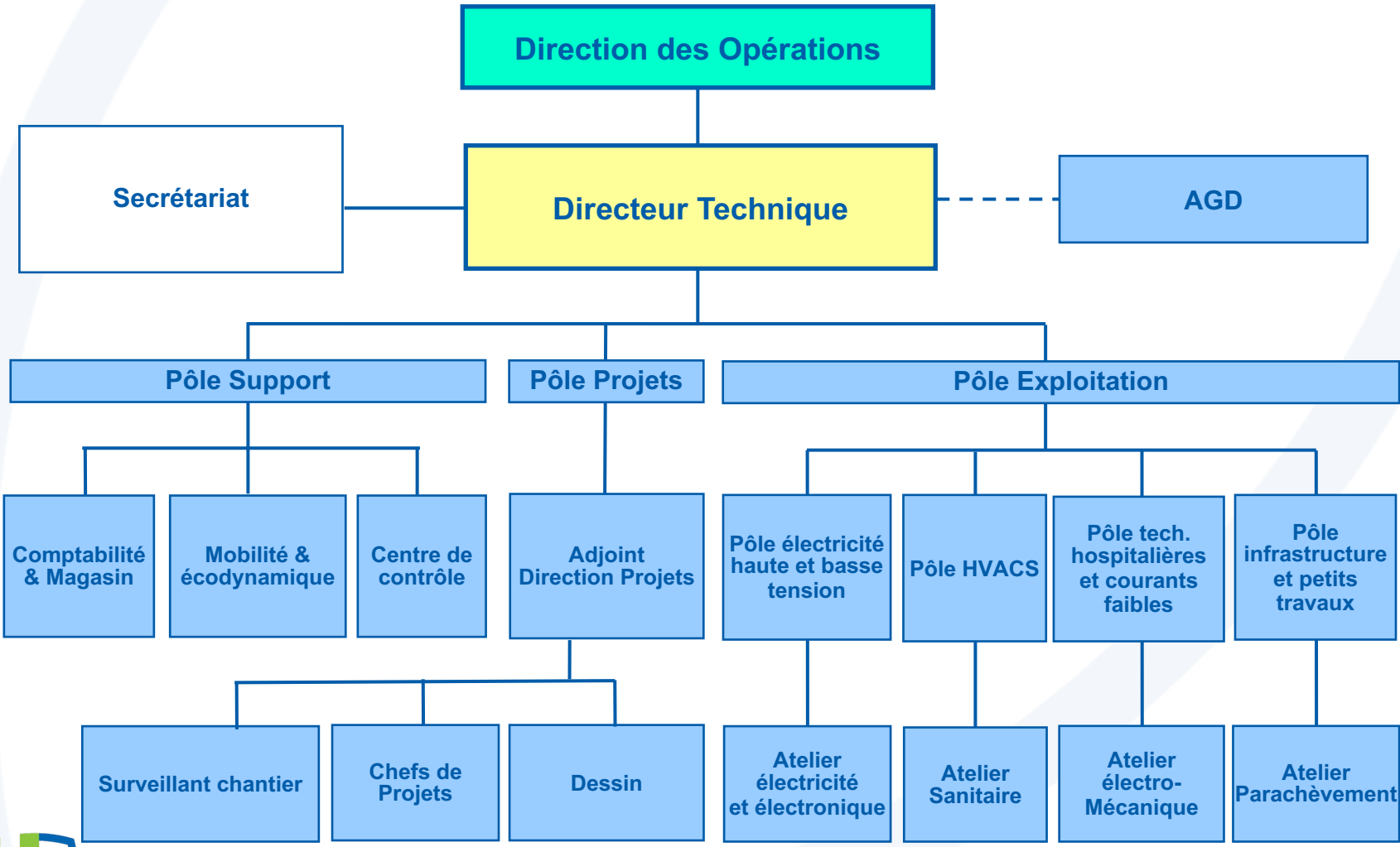
# 4. Département des Opérations



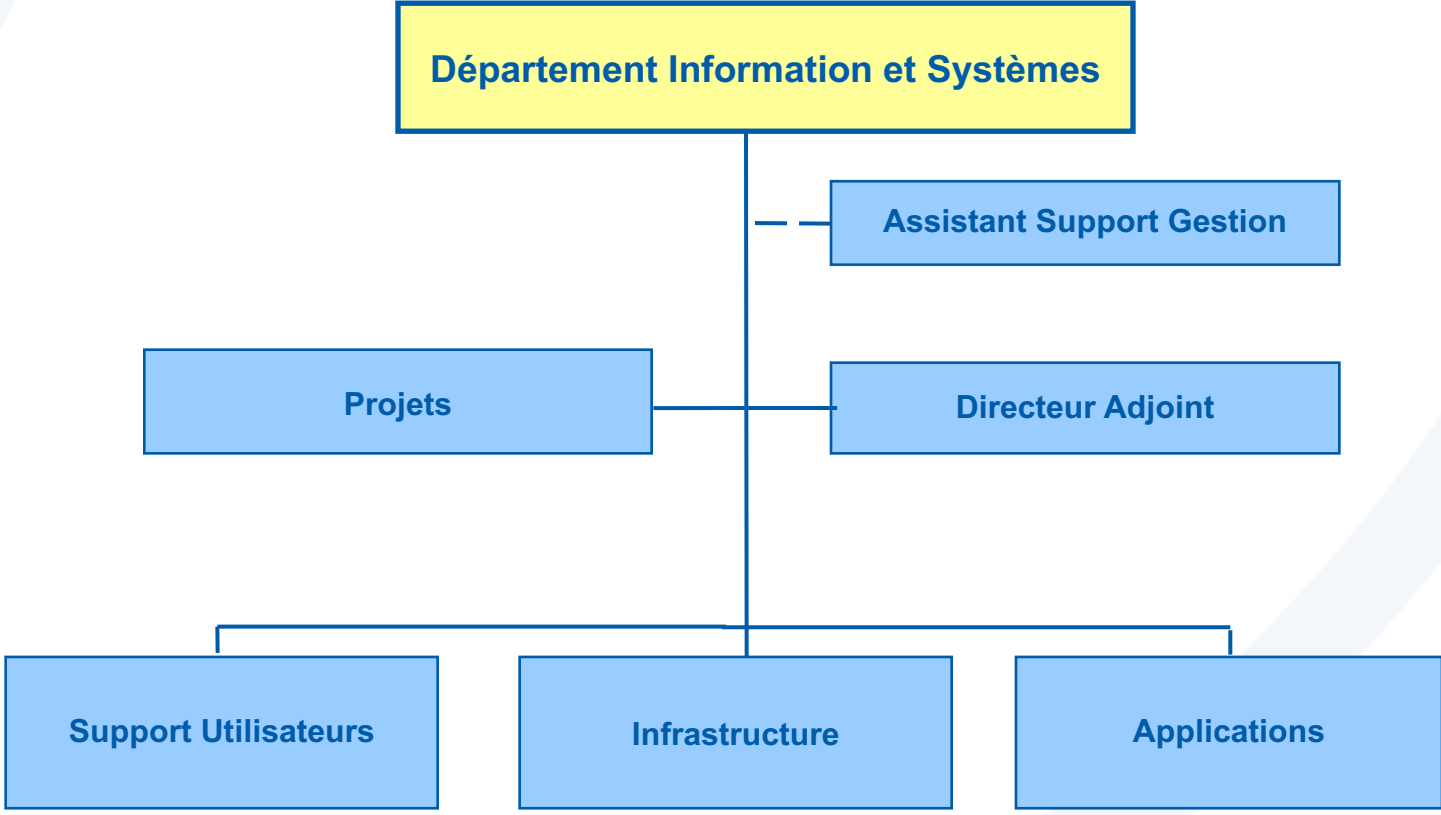
# 4. Département des Opérations



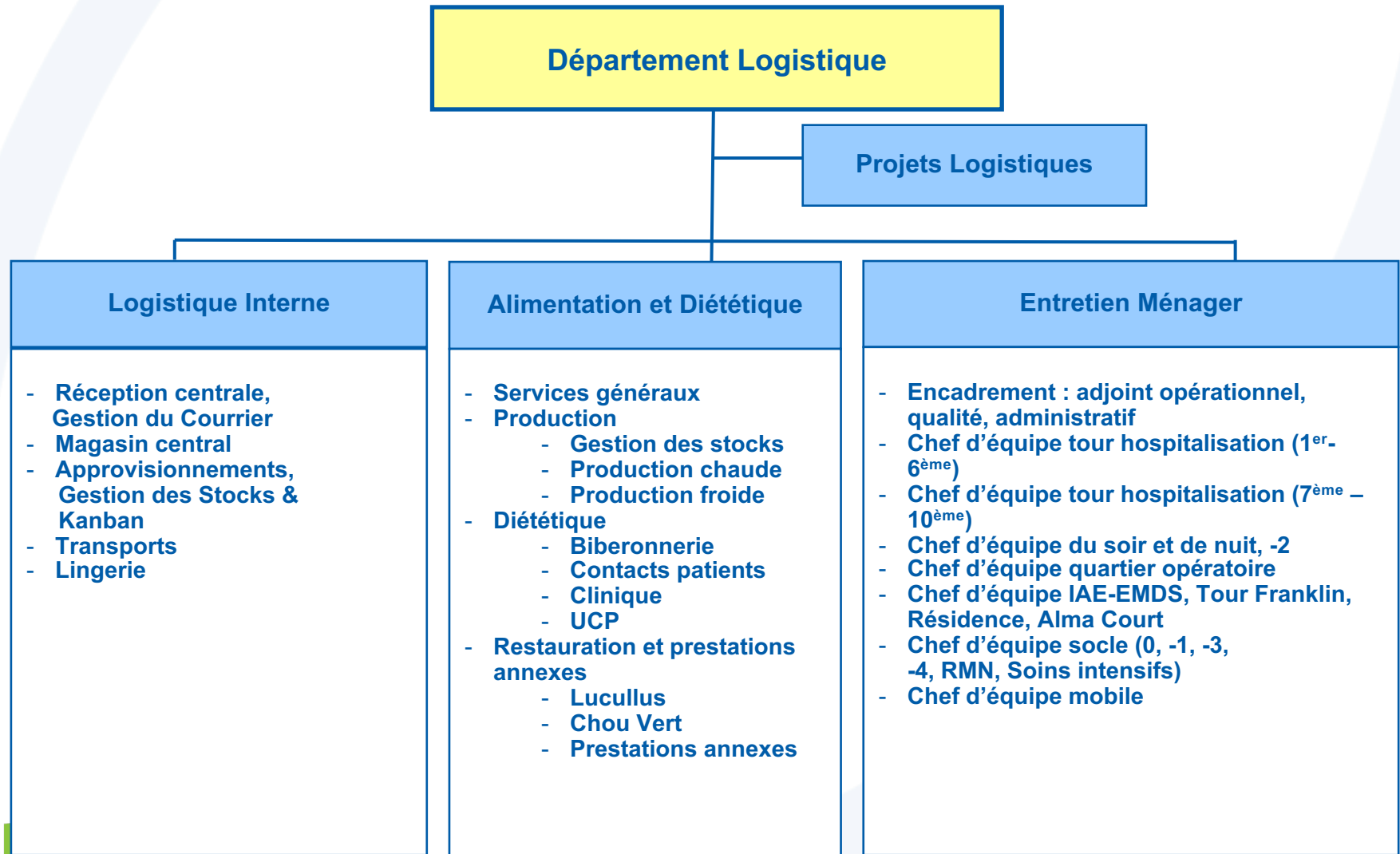
# 4. Département des Opérations – Département Technique



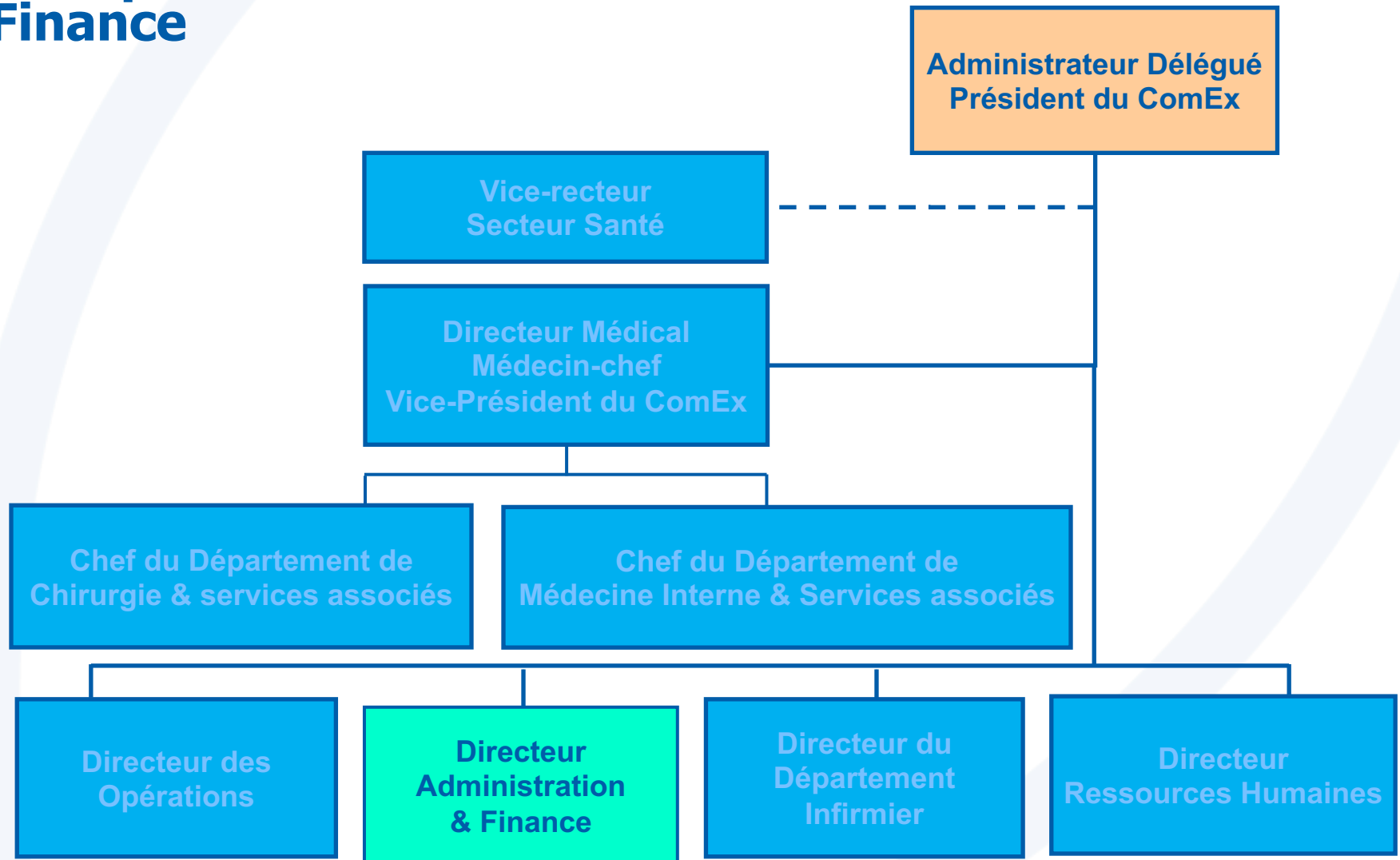
# 4. Département des Opérations – Département Information et Systèmes



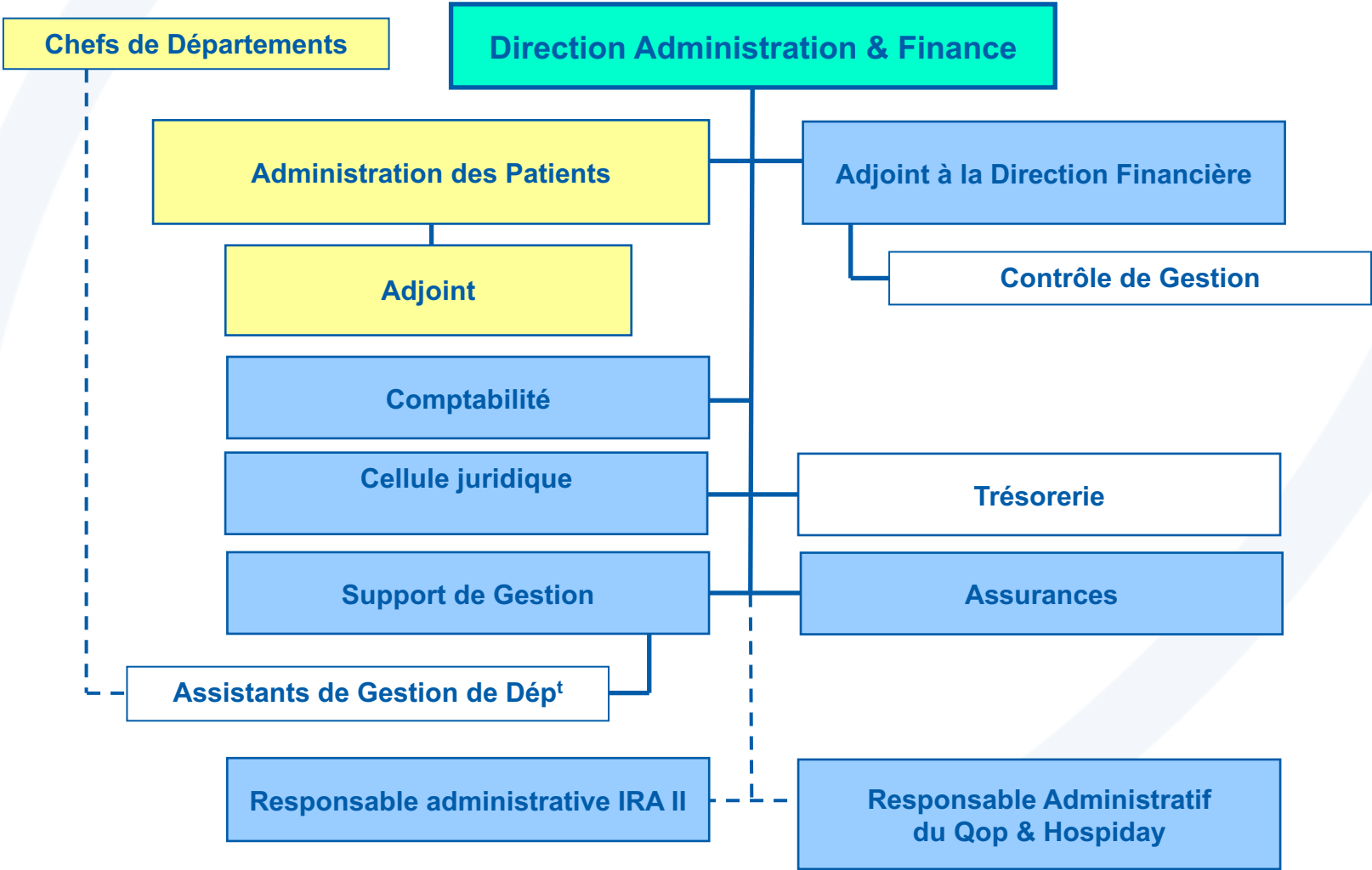
# 4. Département des Opérations – Département Logistique



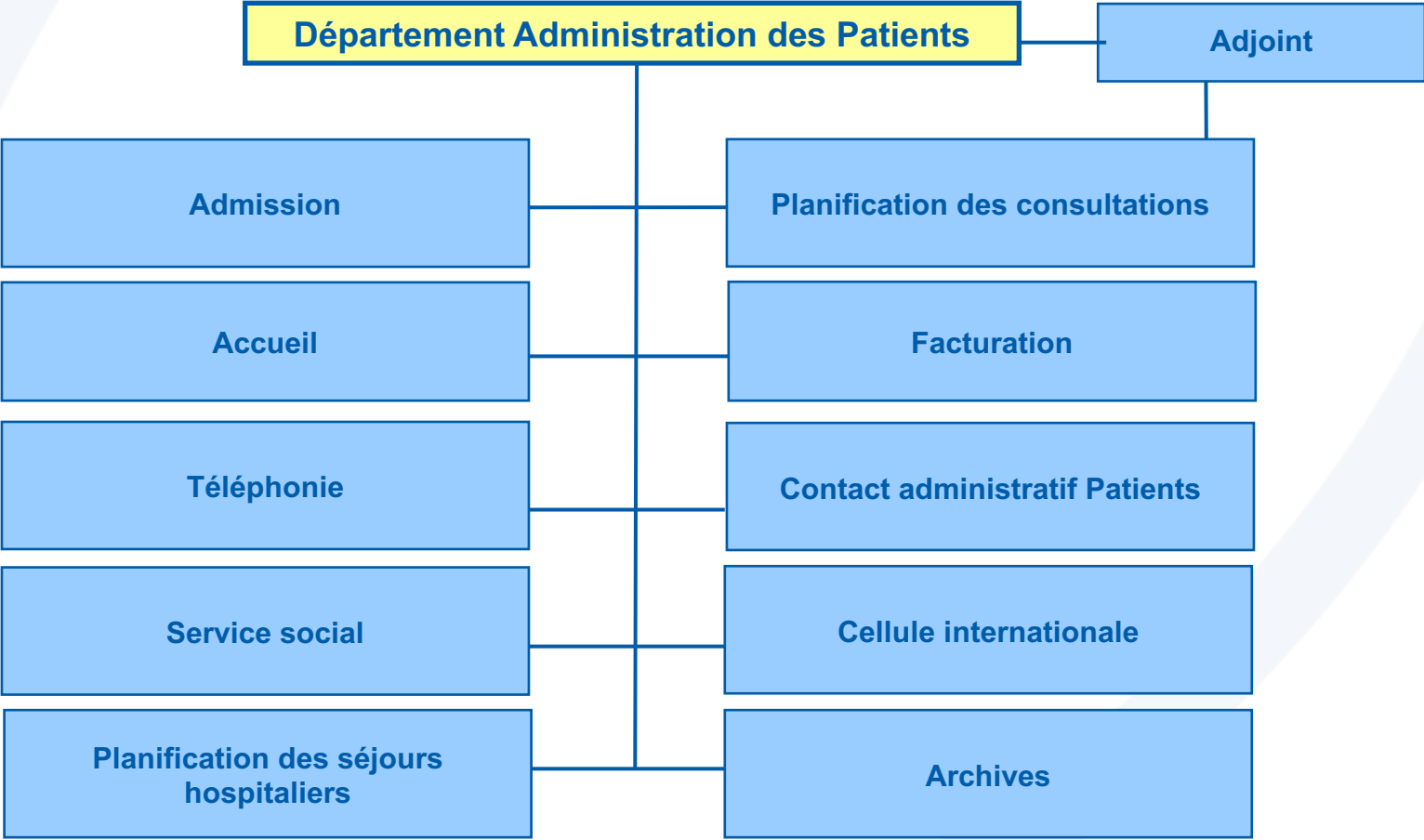
# 5. Département Administration & Finance



# 5. Département Administration & Finance

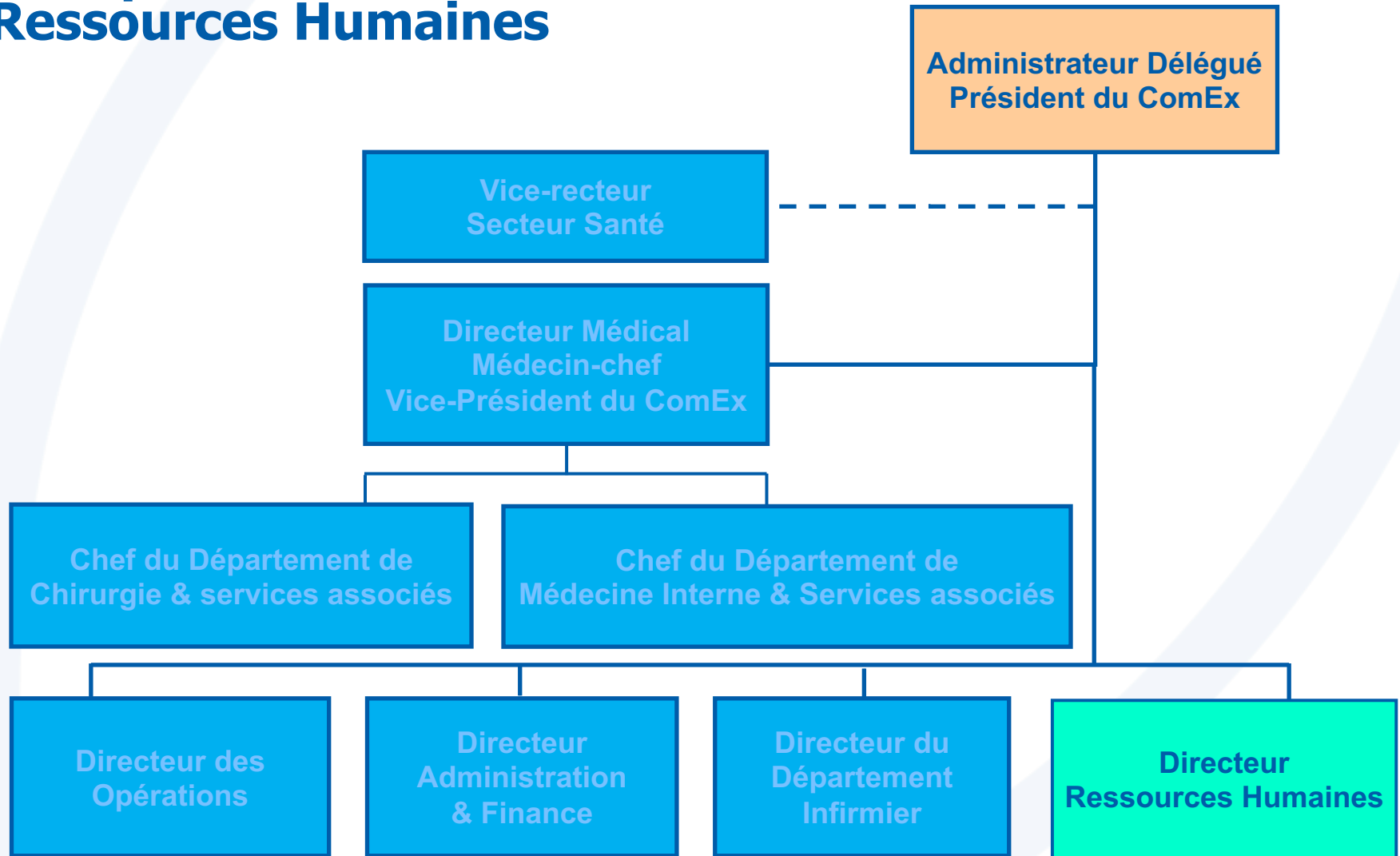


# 5. Département Administration & Finance – Département Administration des Patients





# 6. Département Ressources Humaines



# 6. Département Ressources Humaines

