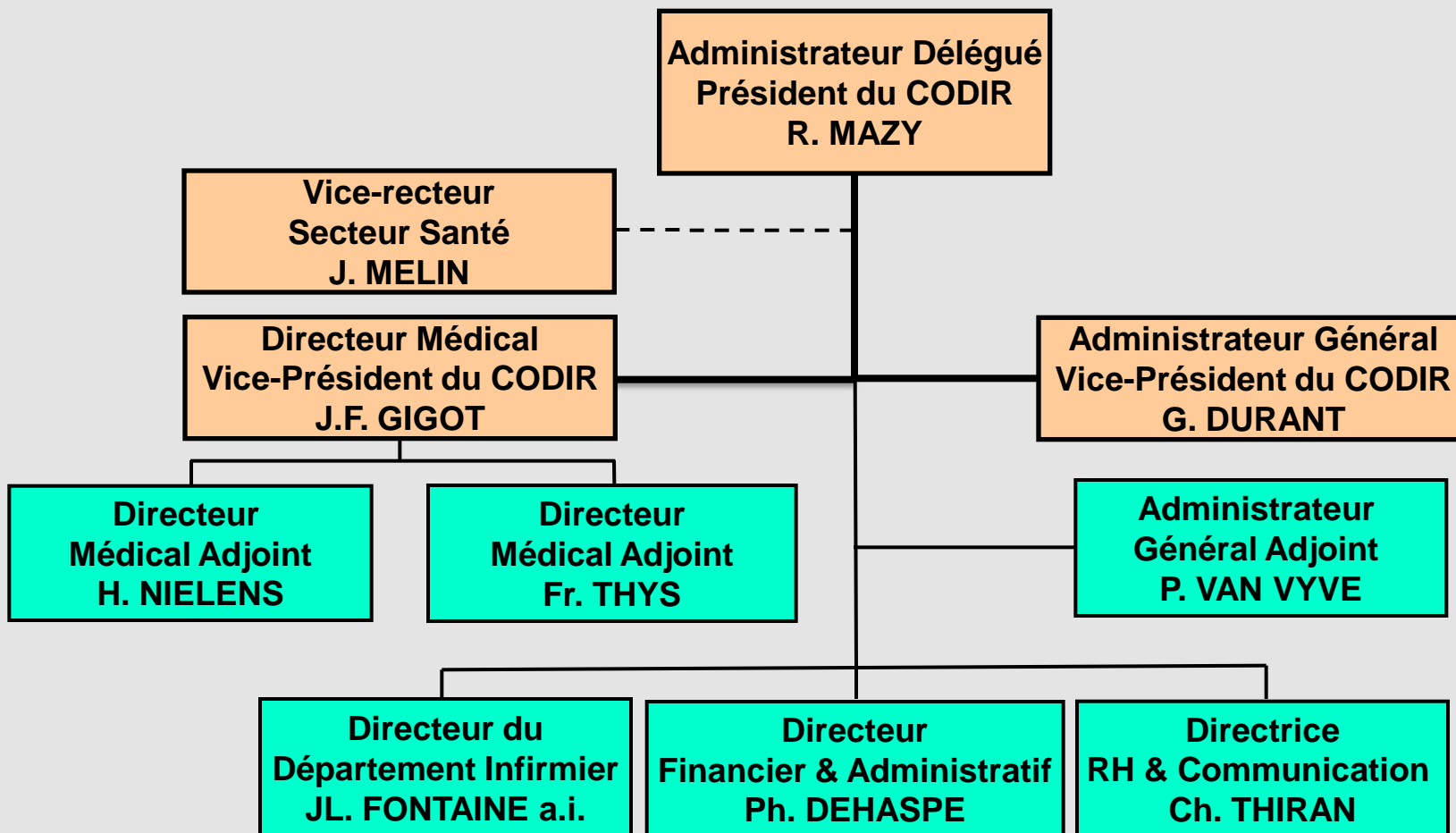


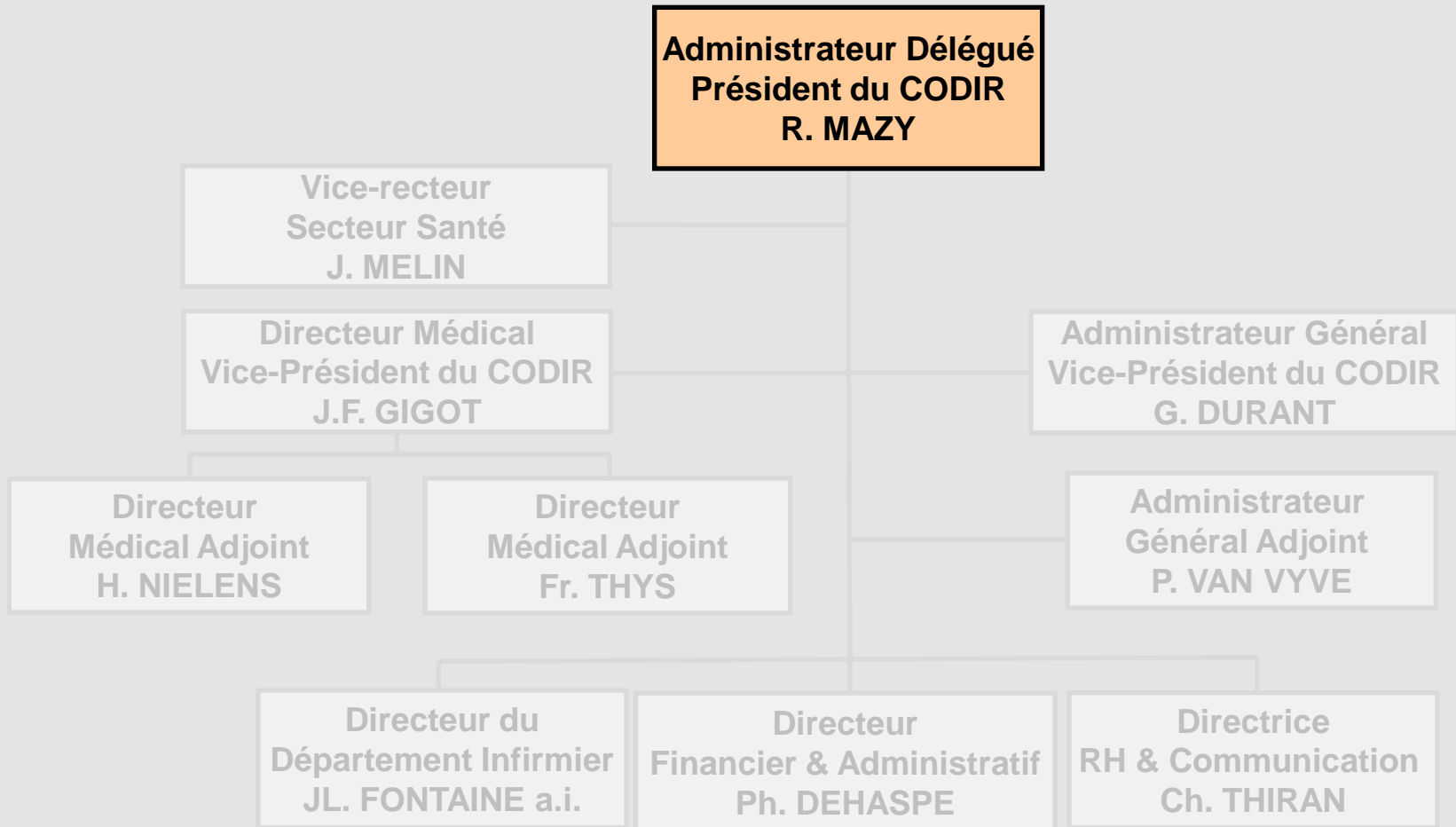
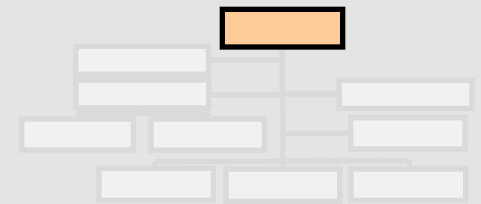
Organigrammes des Cliniques universitaires Saint-Luc

Mai 2012

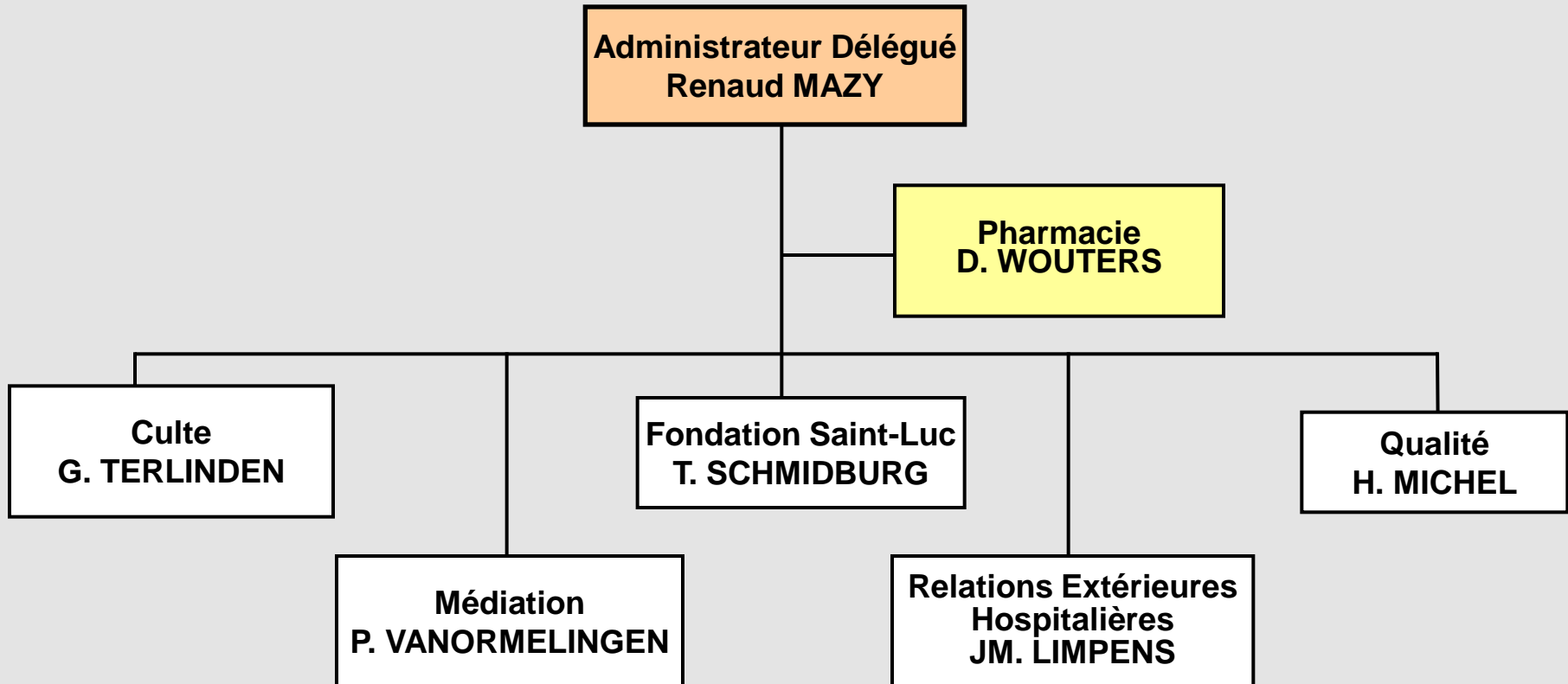
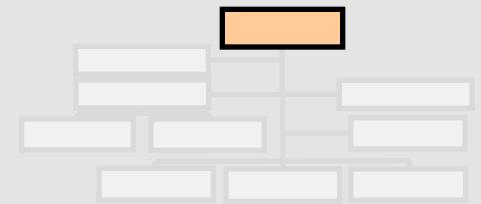
COMITE DE DIRECTION



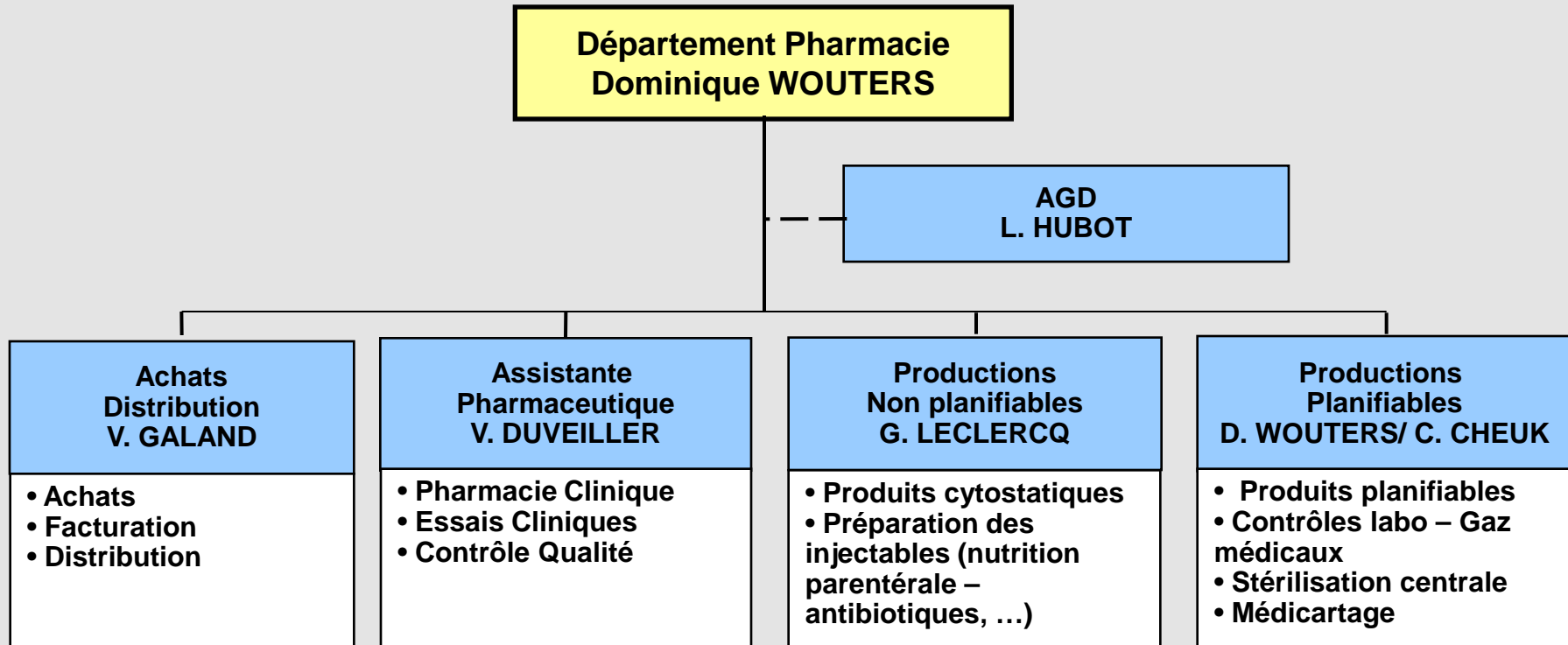
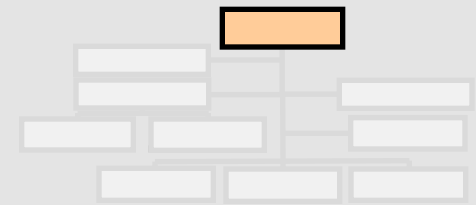
1. Administrateur délégué



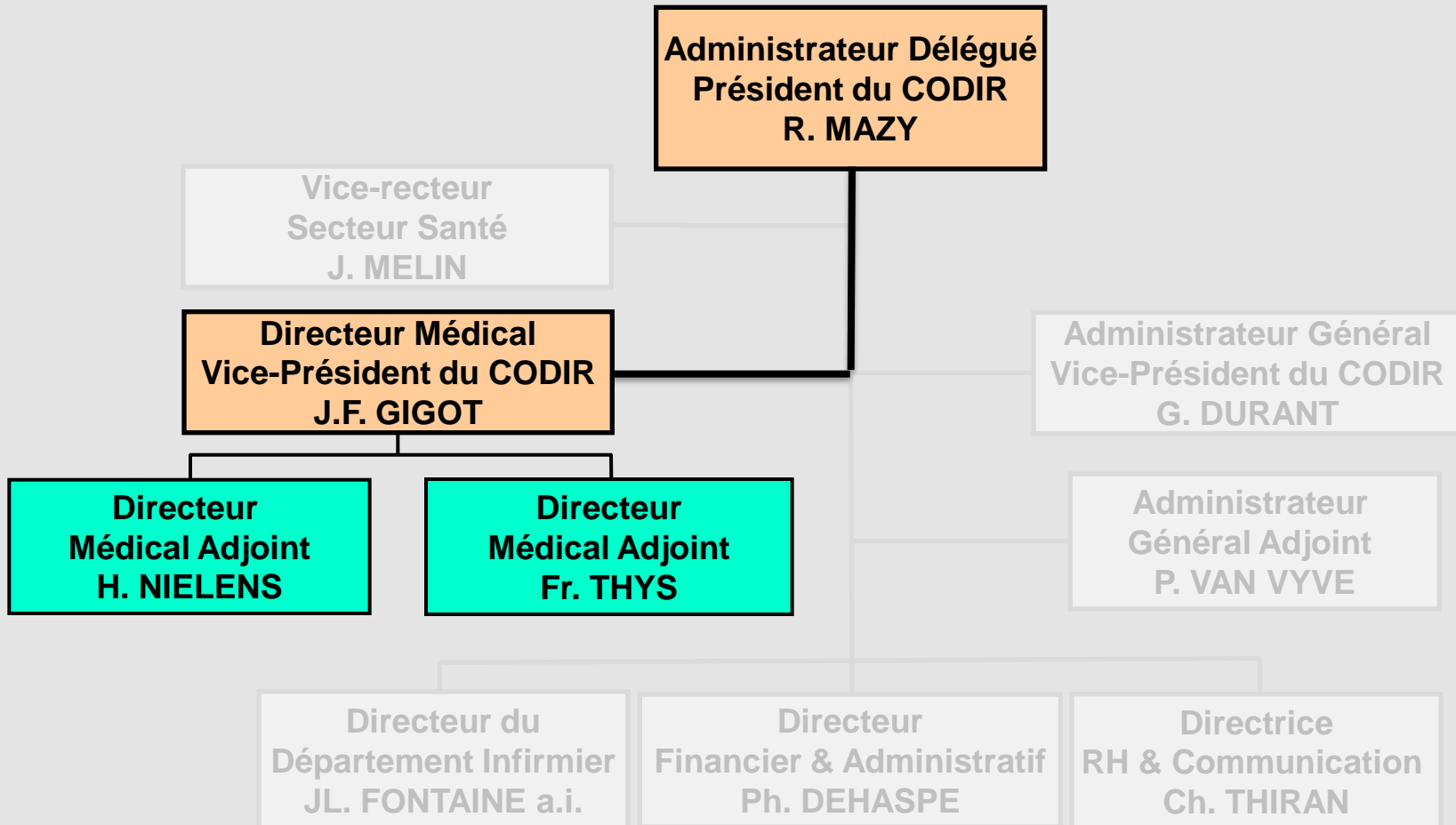
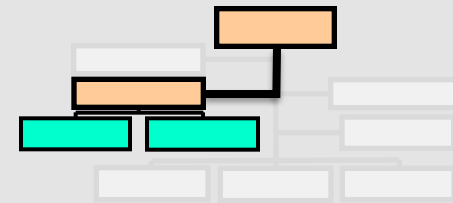
1. Administrateur délégué



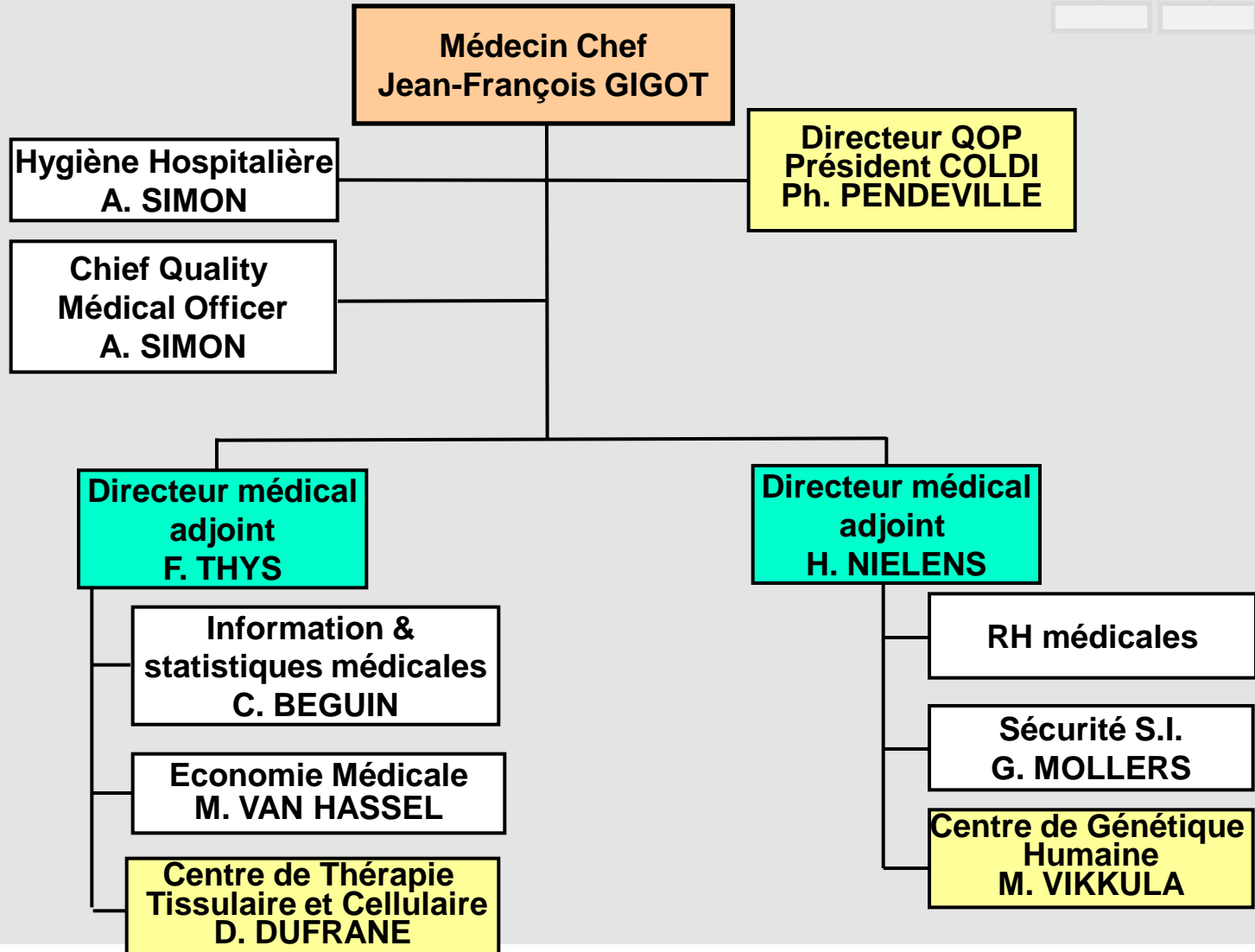
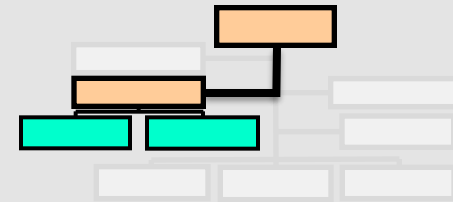
1. Administrateur délégué – Département Pharmacie



2. Direction Médicale

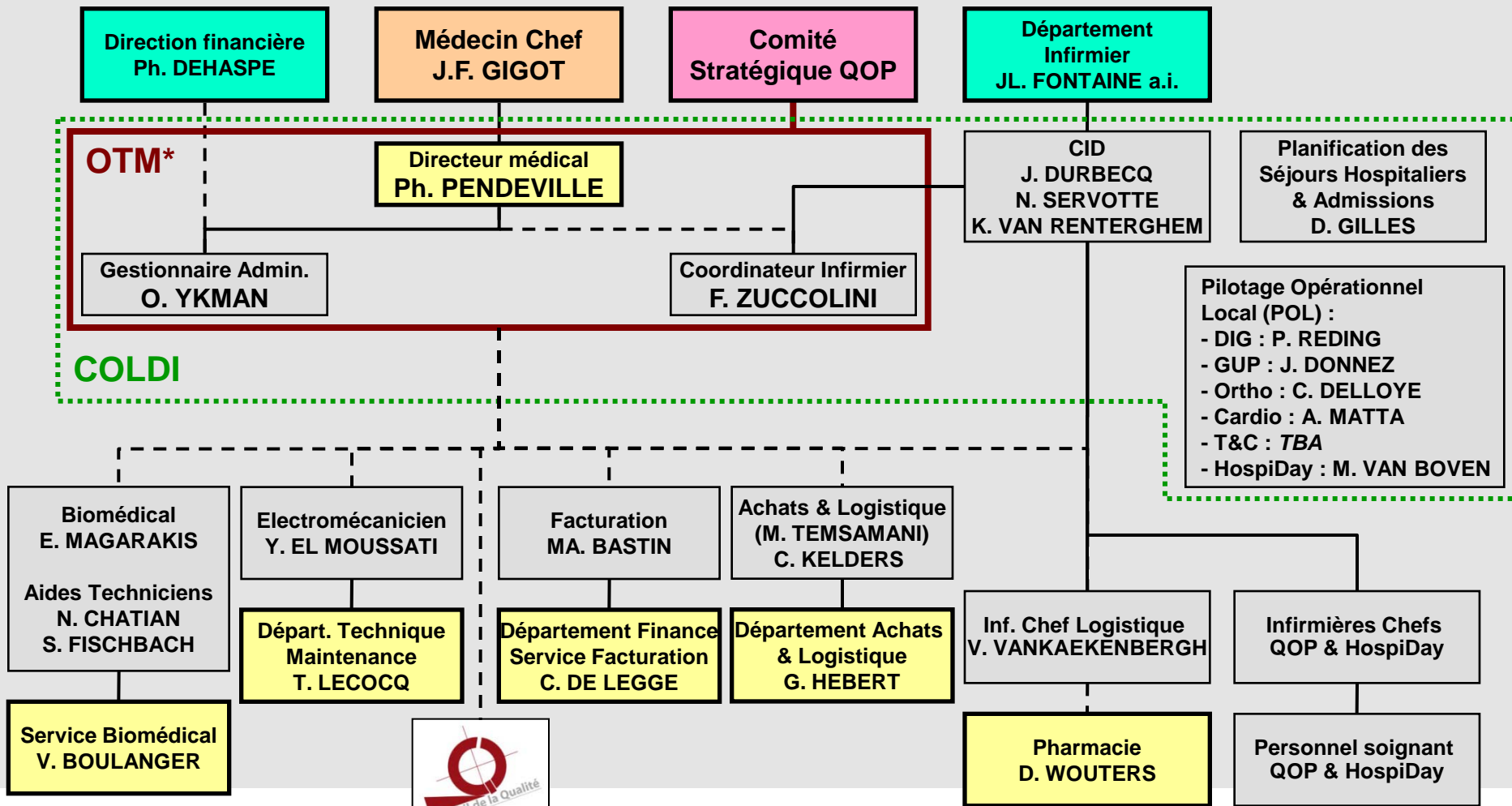
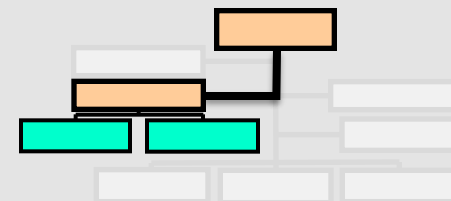


2. Direction Médicale

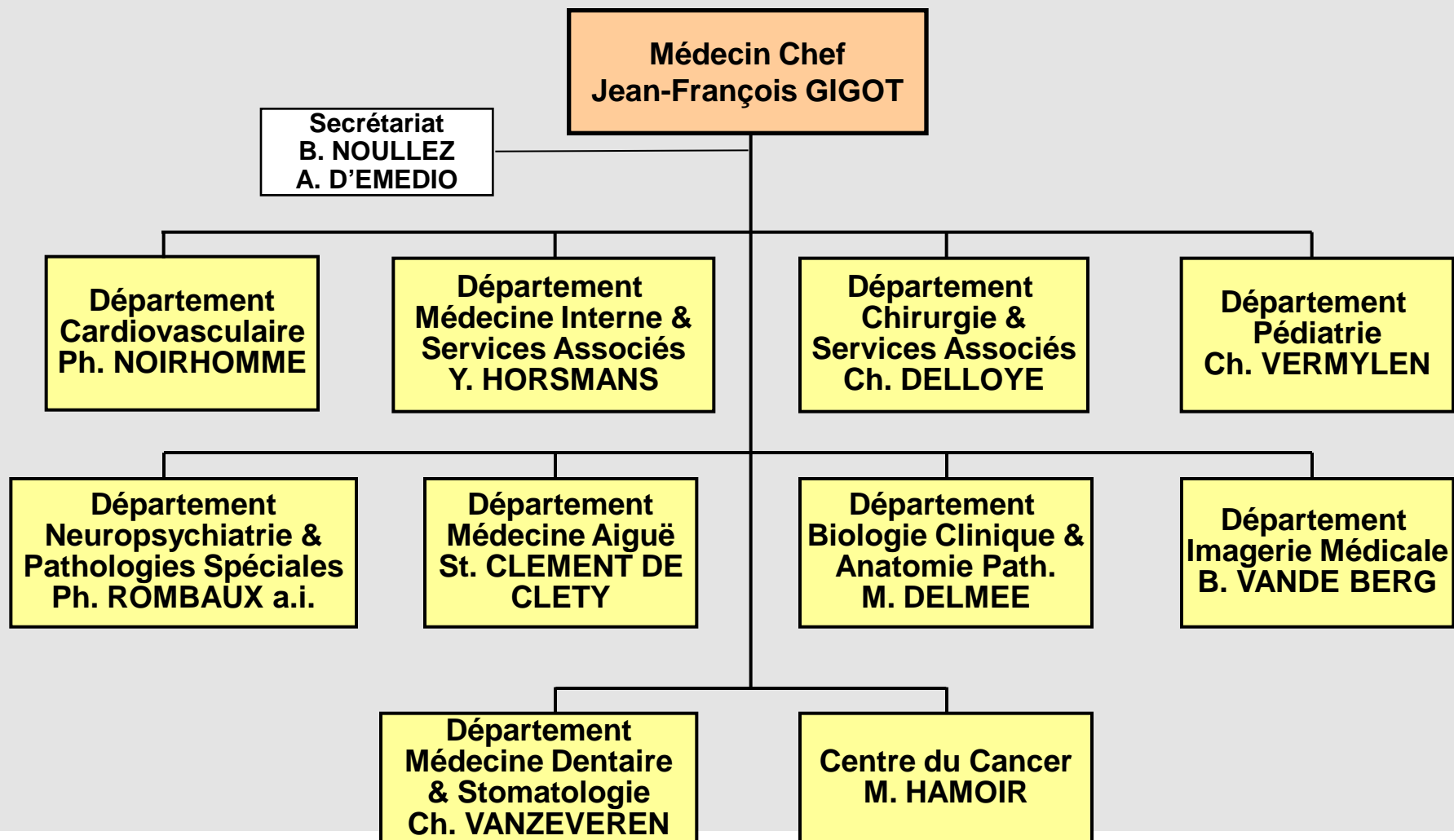
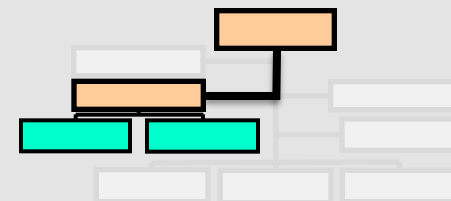


2. Direction Médicale (2)

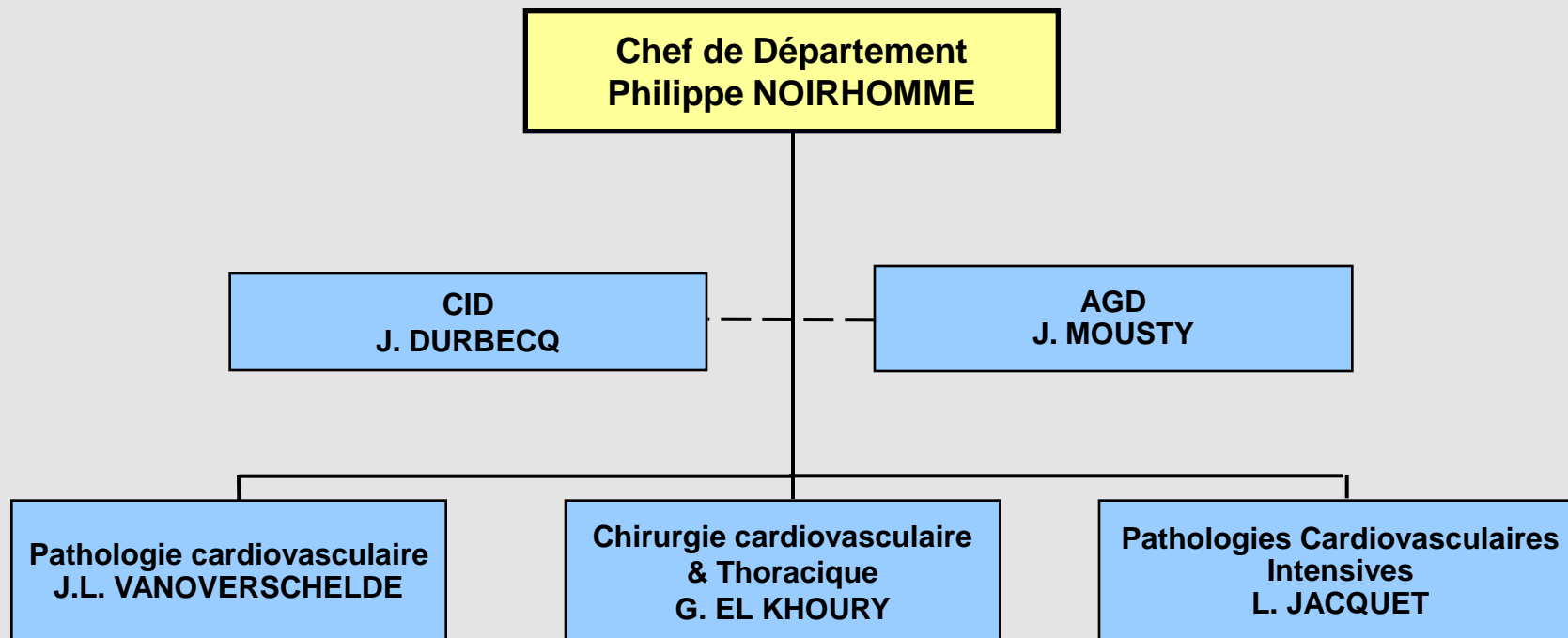
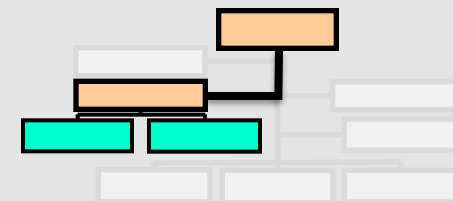
Entité de soins – Quartier Opérateur – Hospi Day



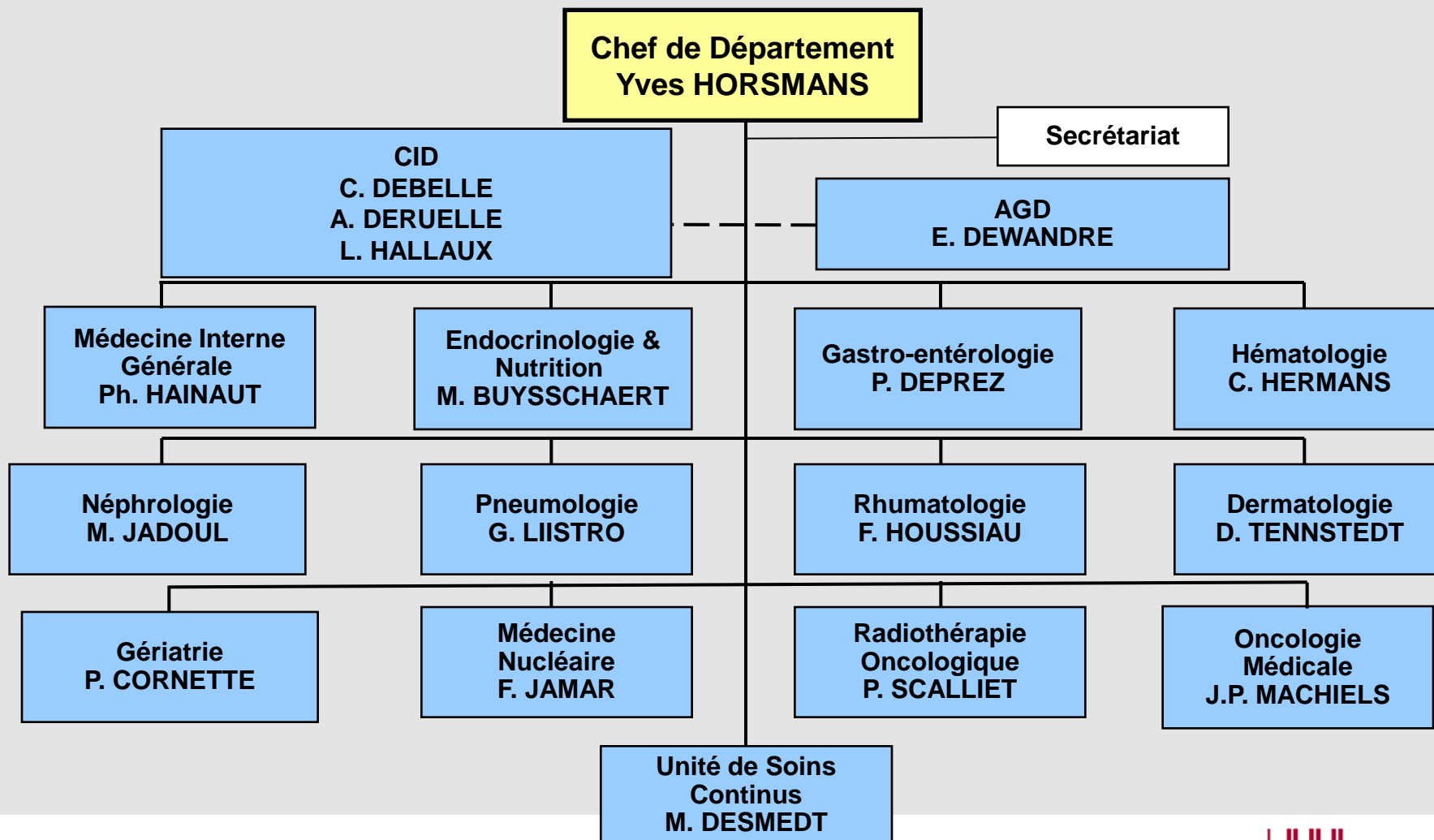
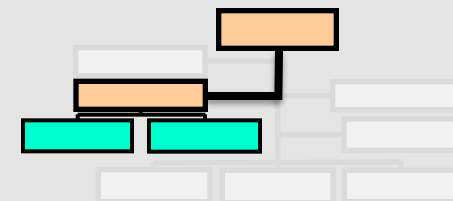
2. Direction Médicale (2) Départements médicaux



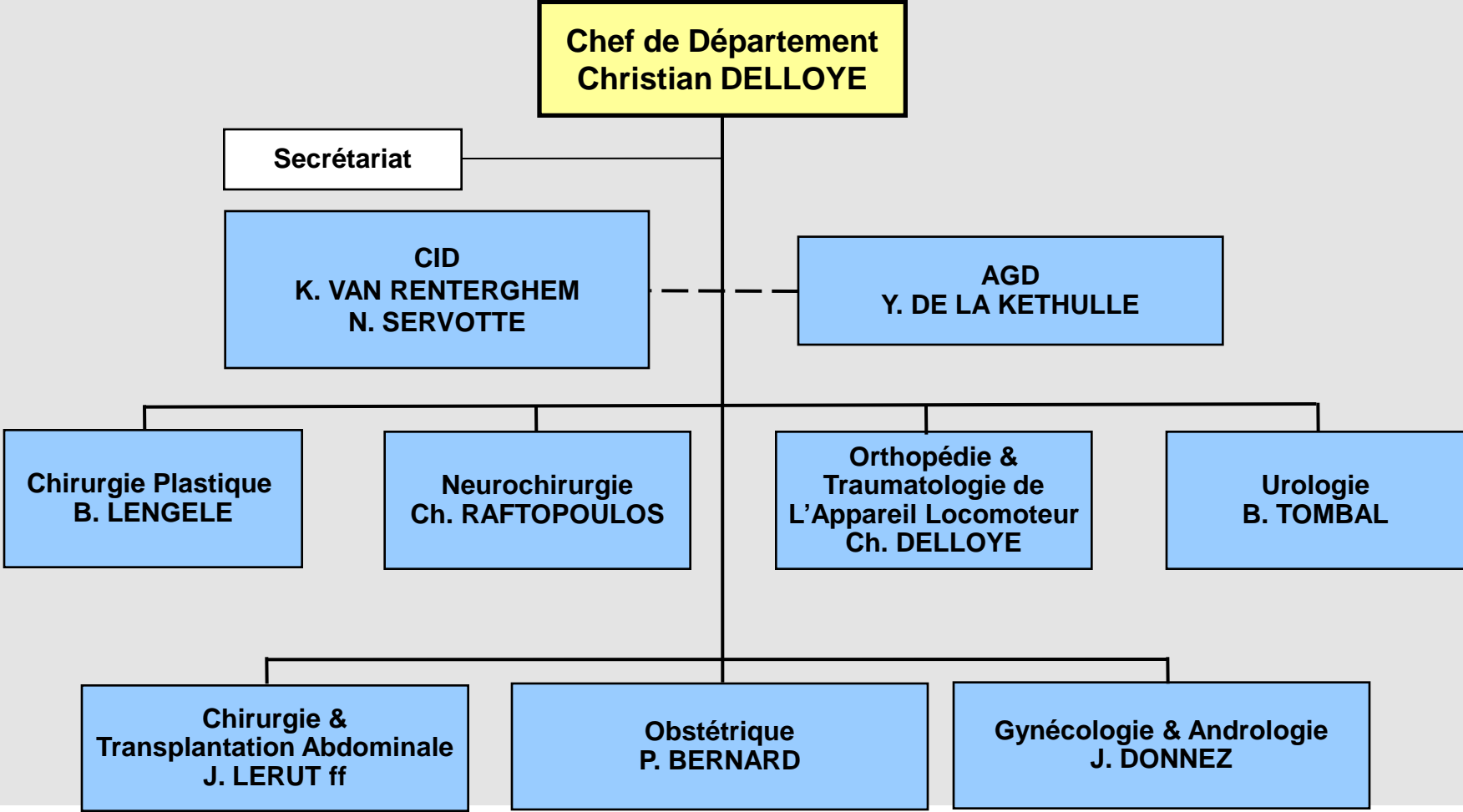
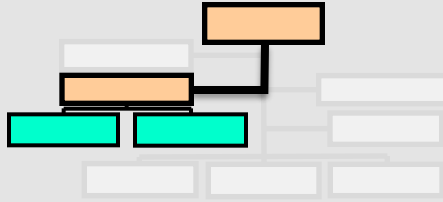
2. Direction Médicale (2) – Département Cardiovasculaire



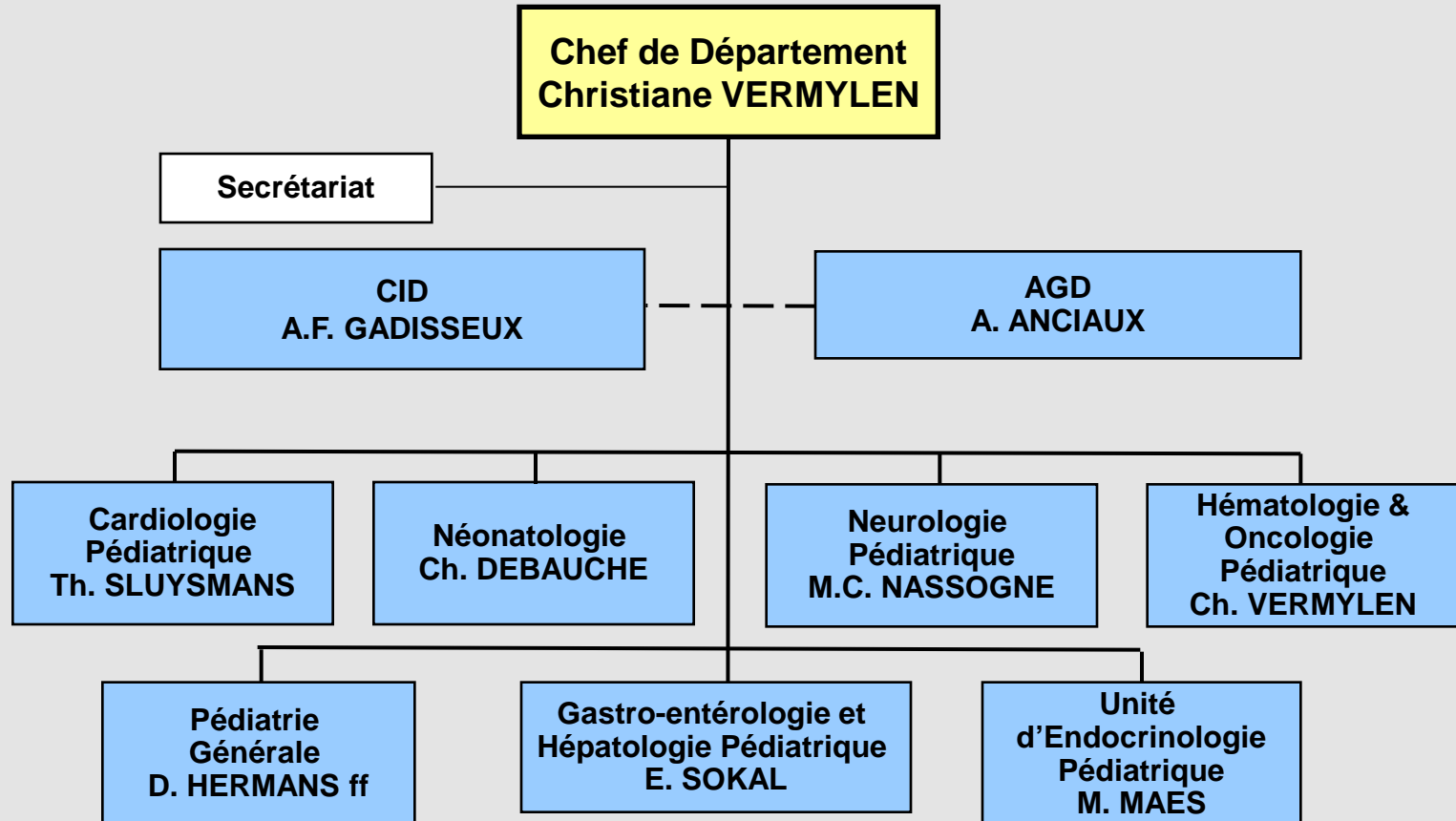
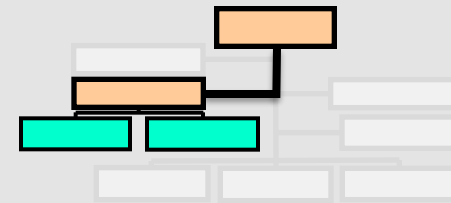
2. Direction Médicale (2) – Département Médecine Interne & Services Associés



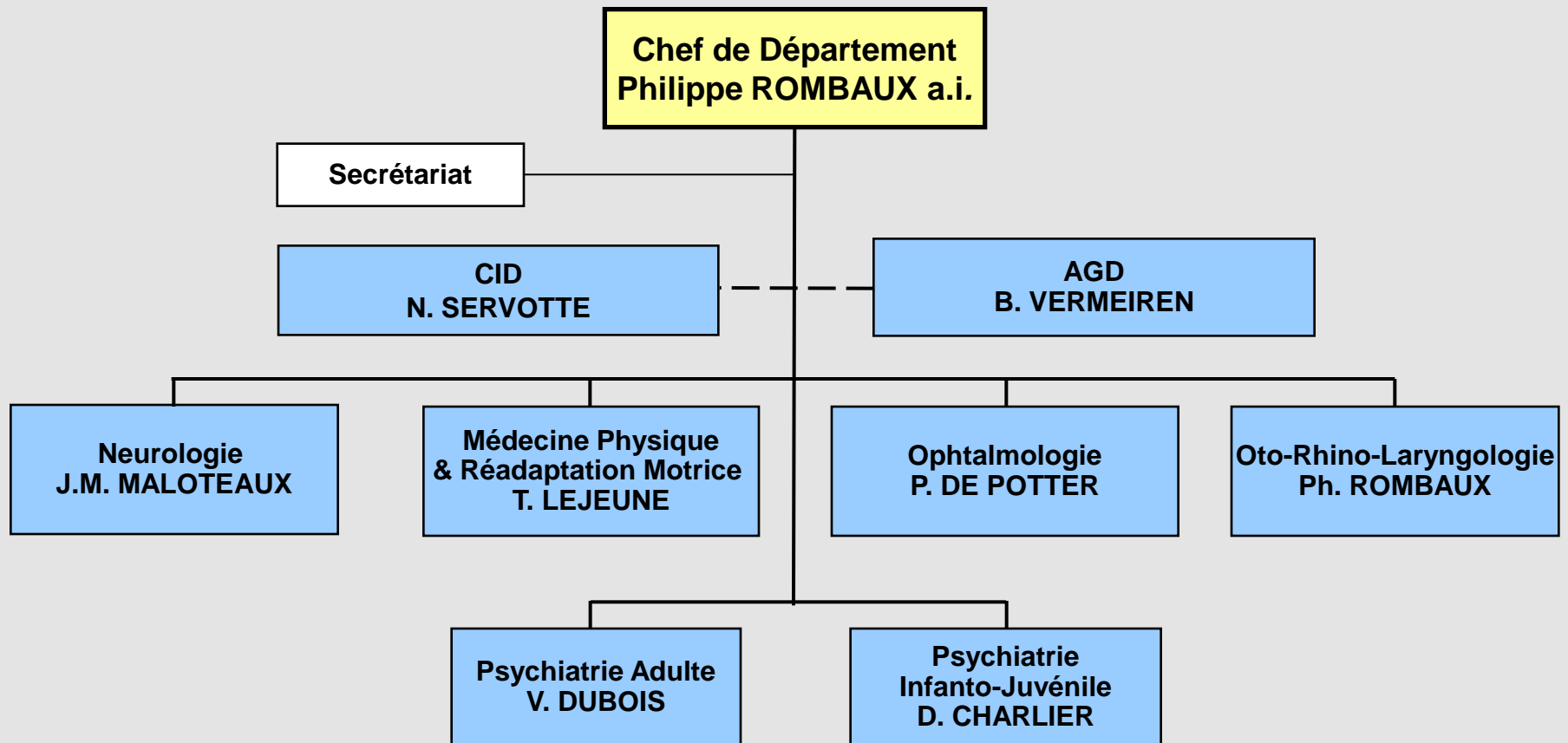
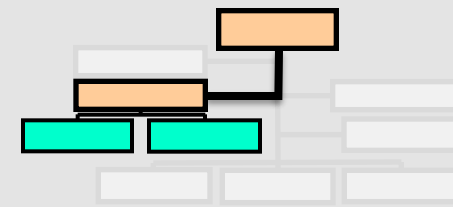
2. Direction Médicale (2) – Département de Chirurgie & Services Associés



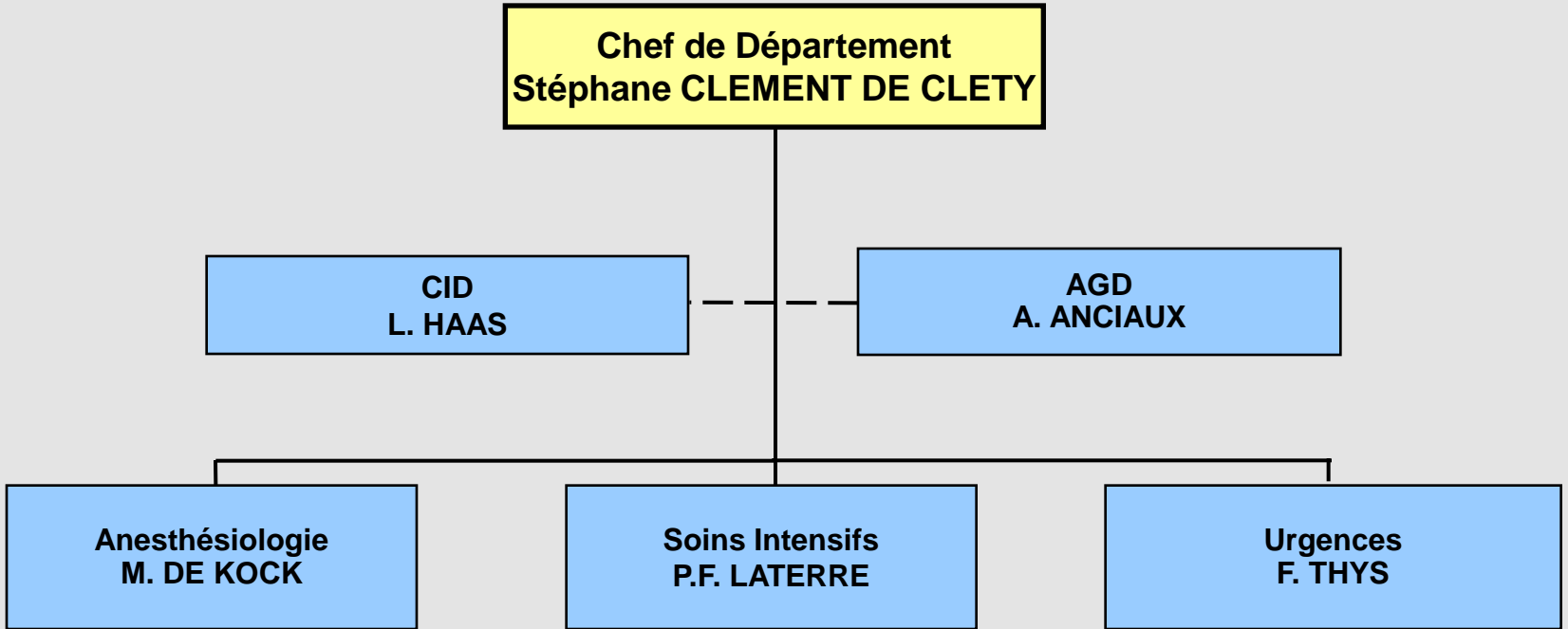
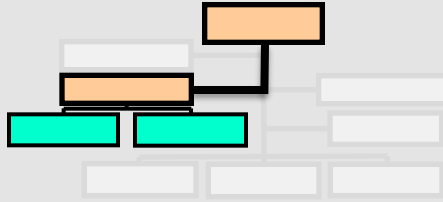
2. Direction Médicale (2) – Département de Pédiatrie



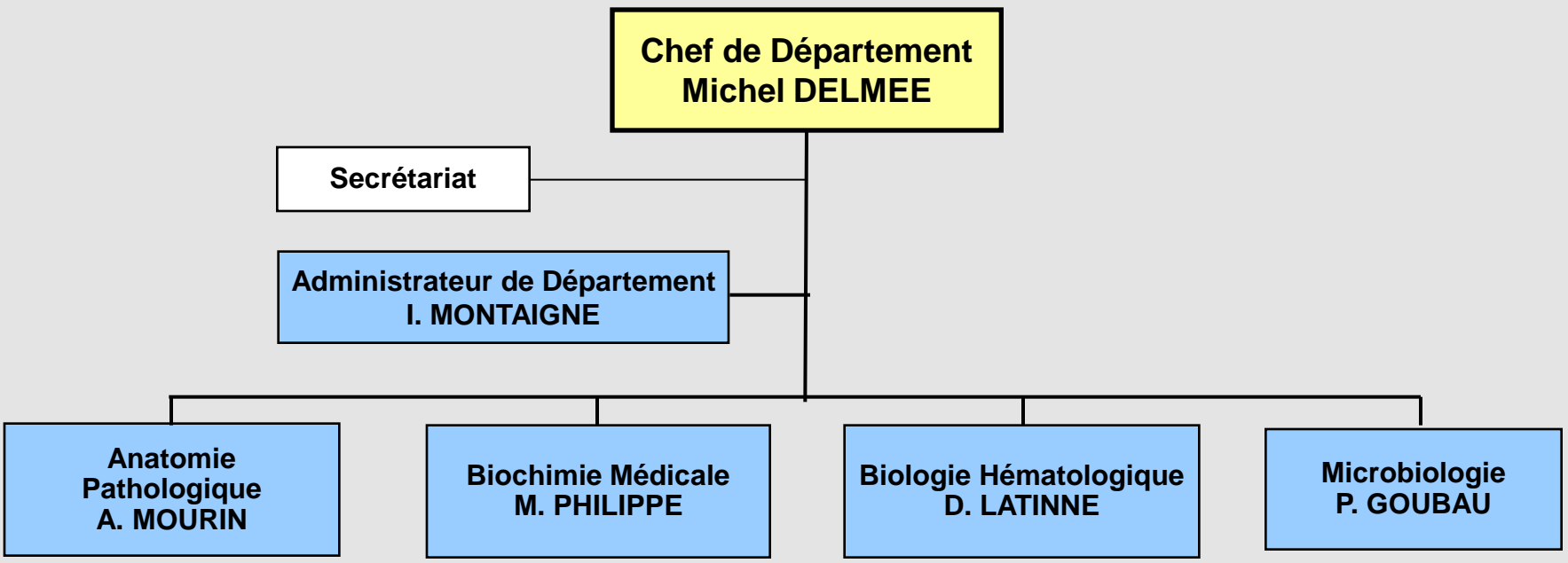
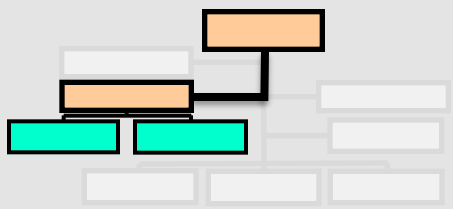
2. Direction Médicale (2) – Département de Neuropsychiatrie & Pathologies Spéciales



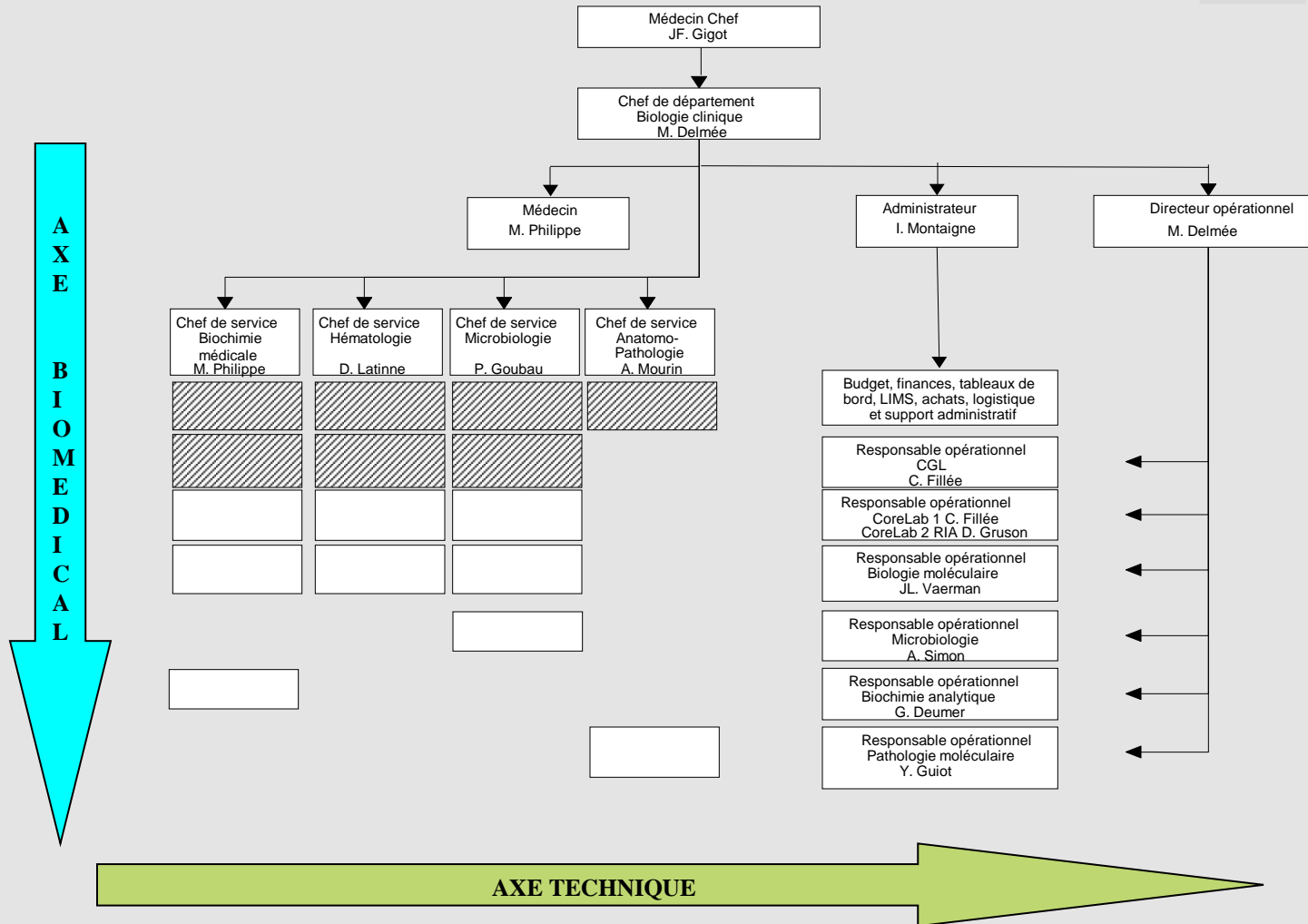
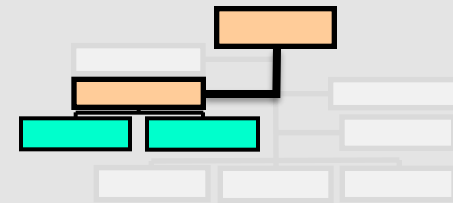
2. Direction Médicale (2) Département de Médecine Aiguë



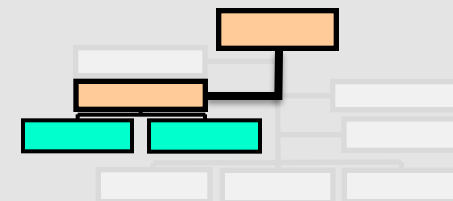
2. Direction Médicale (2) – Département de Biologie Clinique & Ana. Path.



ORGANIGRAMME DE LA TOUR DES LABO



2. Direction Médicale (2) – Département de Médecine Dentaire & Stomatologie



**Chef de Département
Christian VANZEVEREN**

Secrétariat

**CID
A. DERUELLE**

**AGD
C. LAURENT**

**Dentisterie
Pédiatrique
& Soins Dentaires
Aux Handicapés
Ch. PILIPILI (1 an)**

**Dentisterie
Conservatrice
& Endodontie
S. BEUN (1 an)**

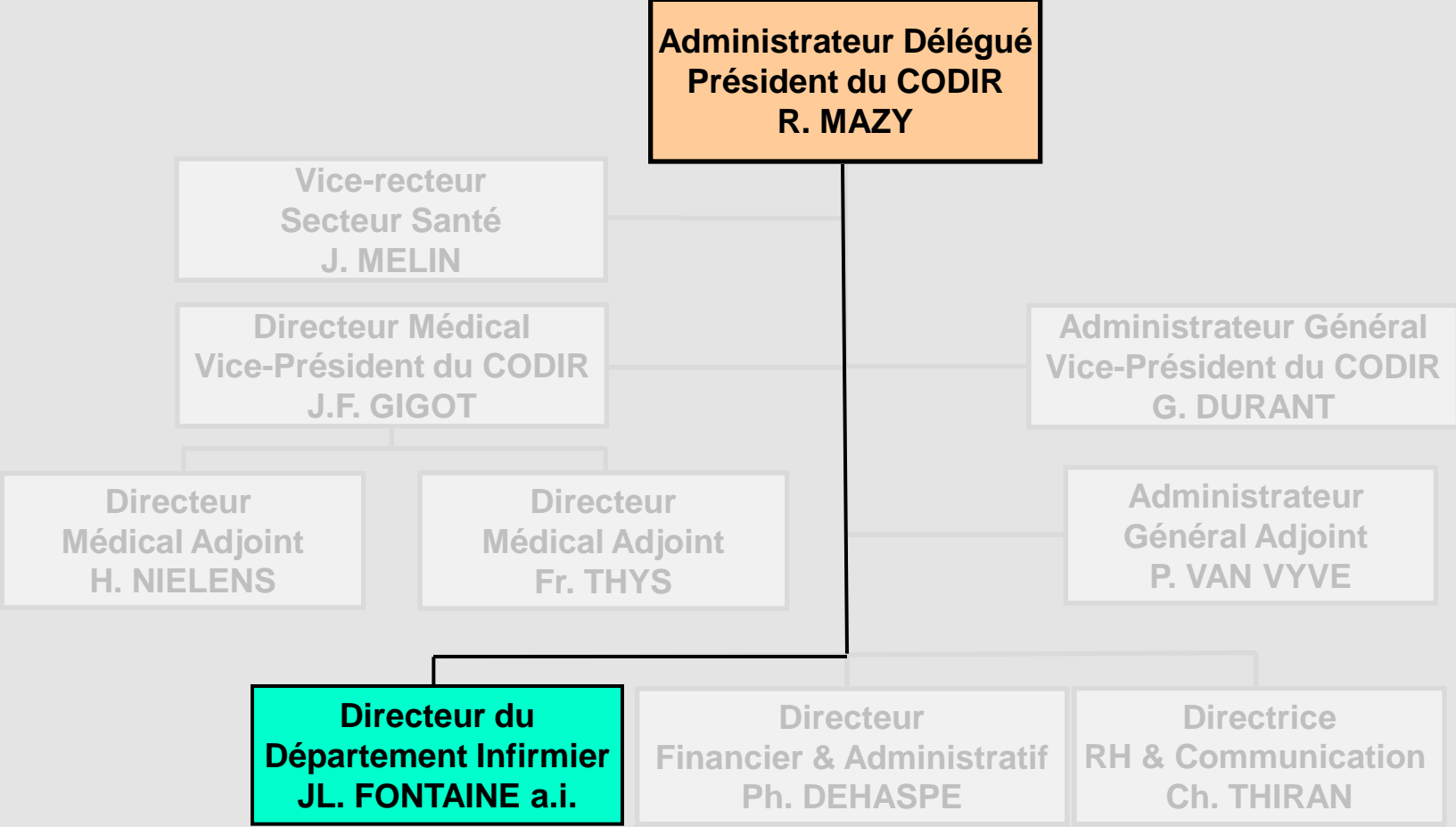
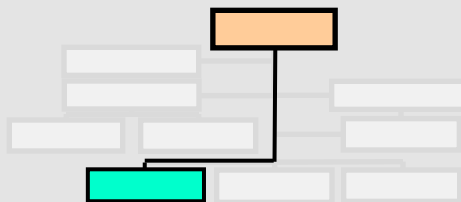
**Parodontologie
M. BRECX (1 an)**

**Prothèse Dentaire
Ch. VANZEVEREN**

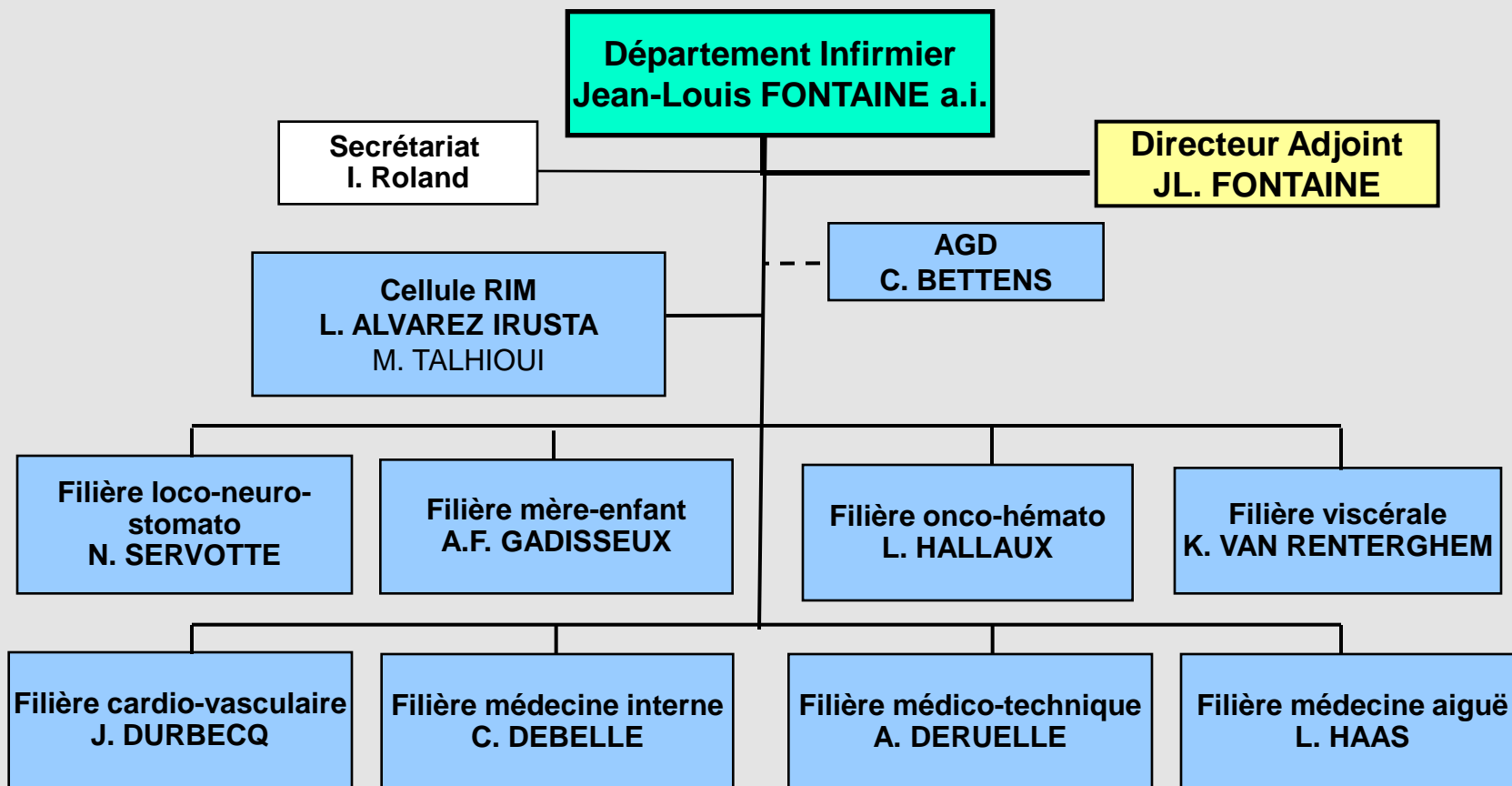
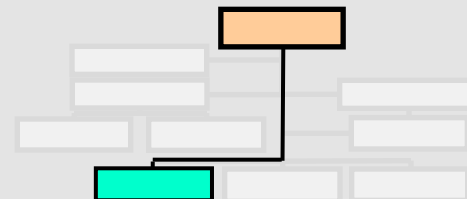
**Stomatologie &
Chirurgie
Maxillo-faciale
H. REYCHLER**

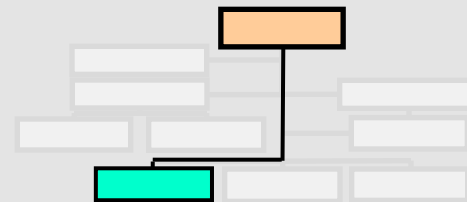
**Orthodontie &
Orthopédie
Dento-Faciale
M. DELATTE (1 an)**

3. Direction Infirmière

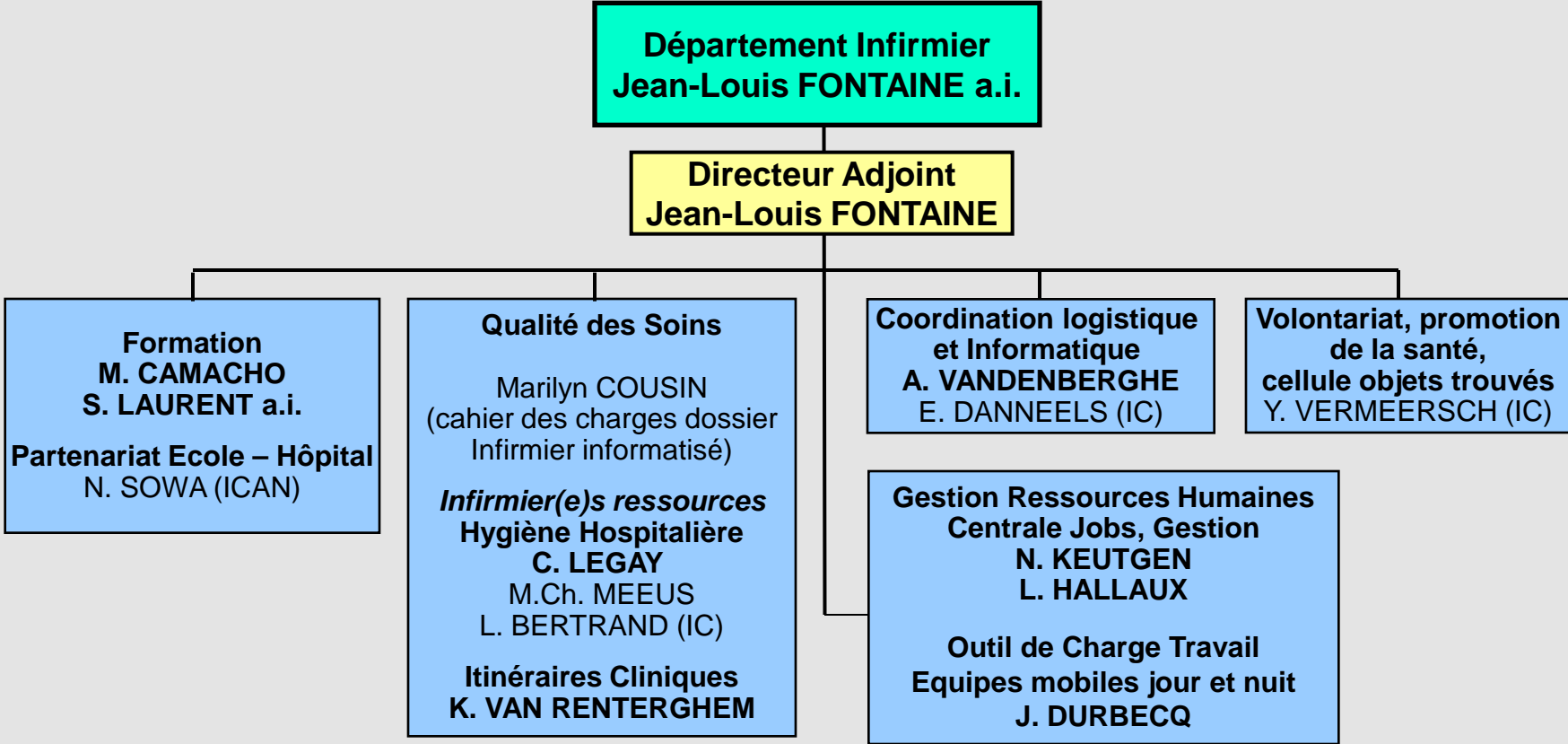


3. Direction Infirmière (1)

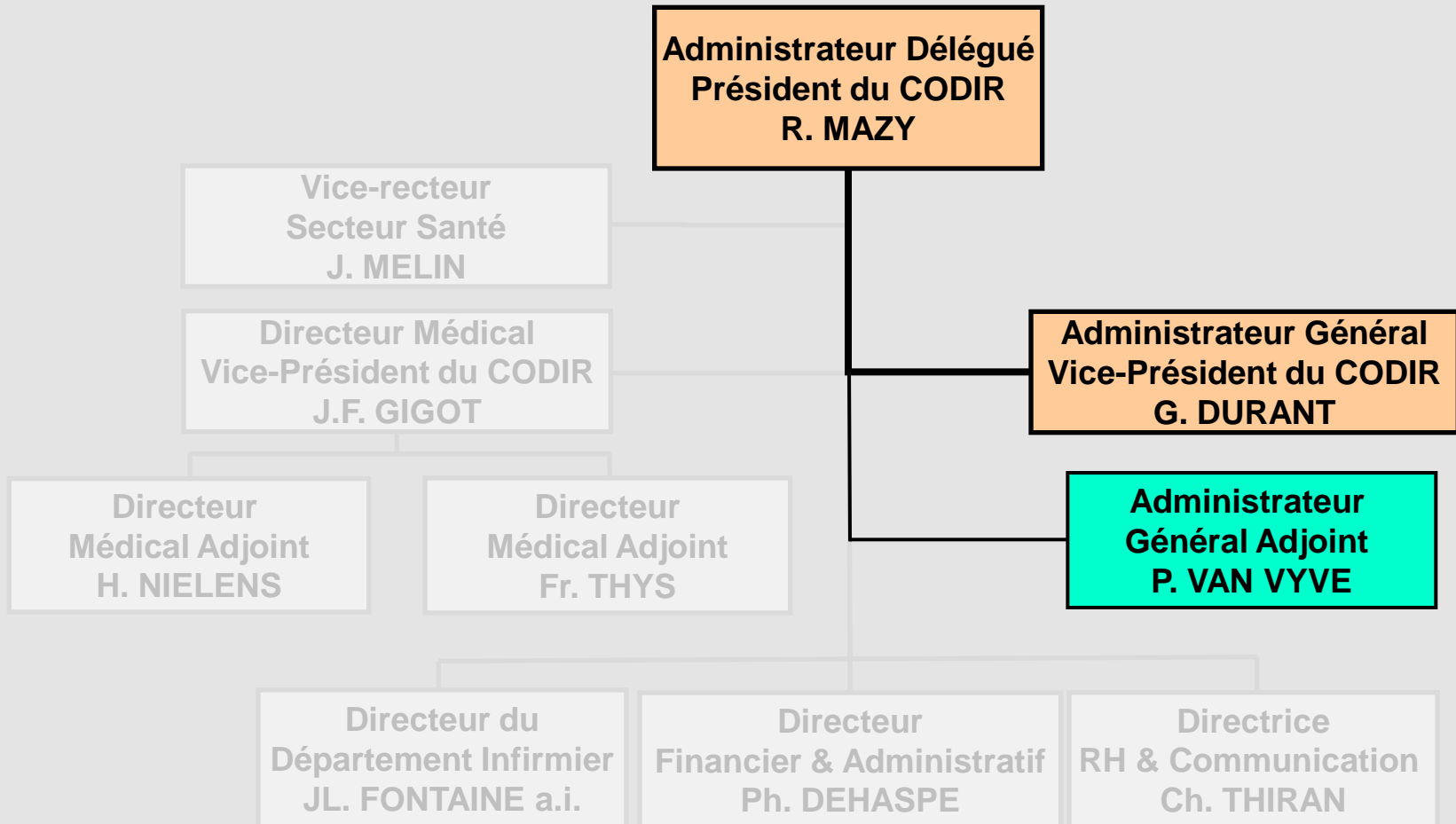
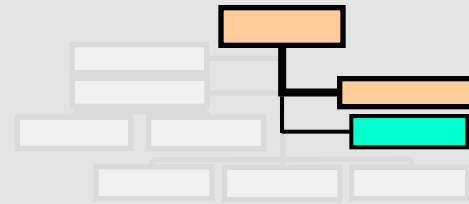




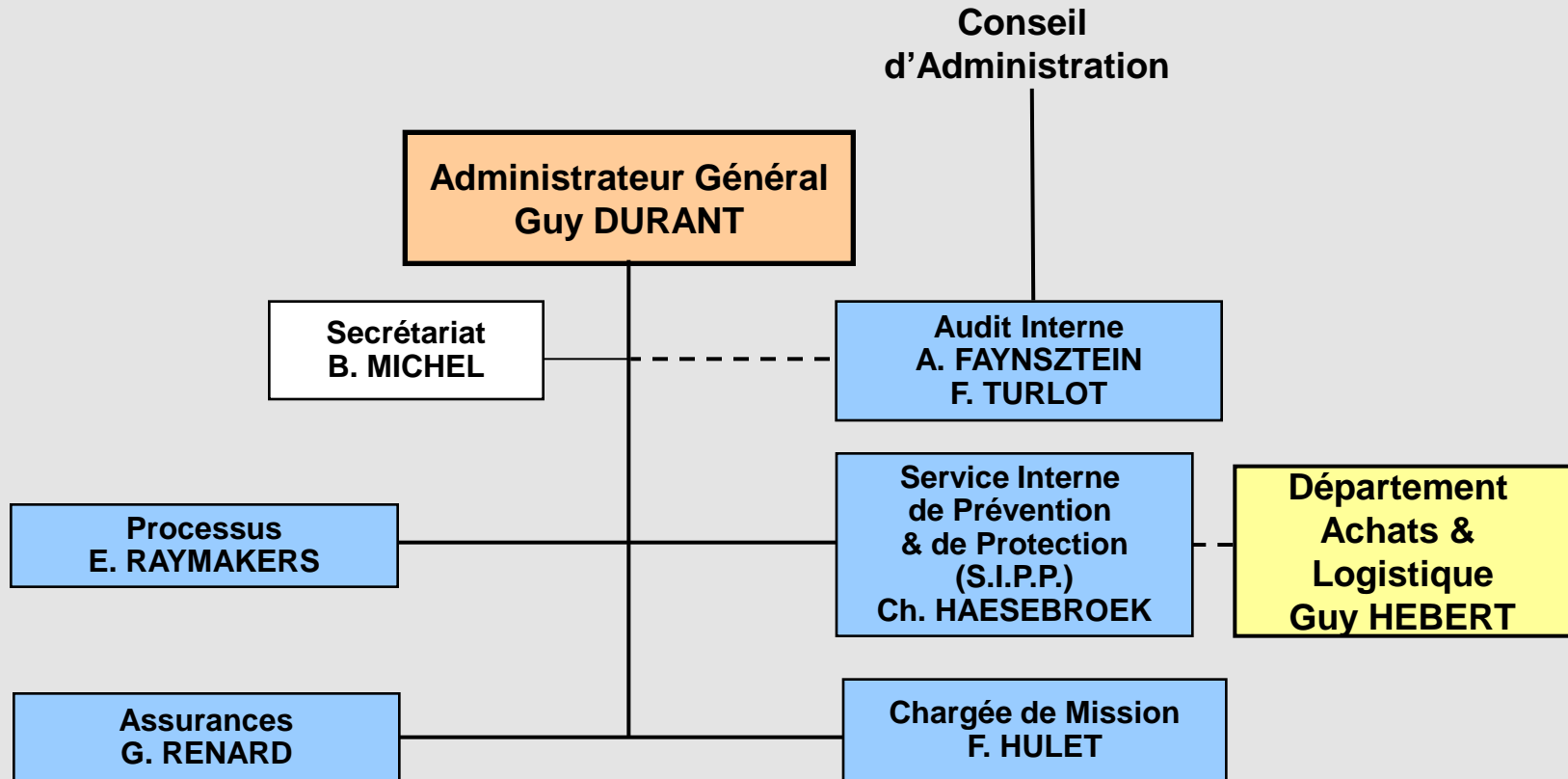
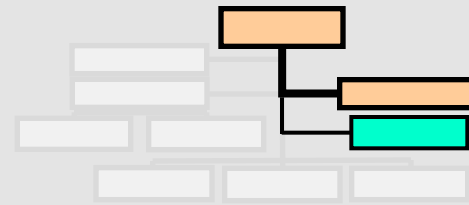
3. Direction Infirmière (2)



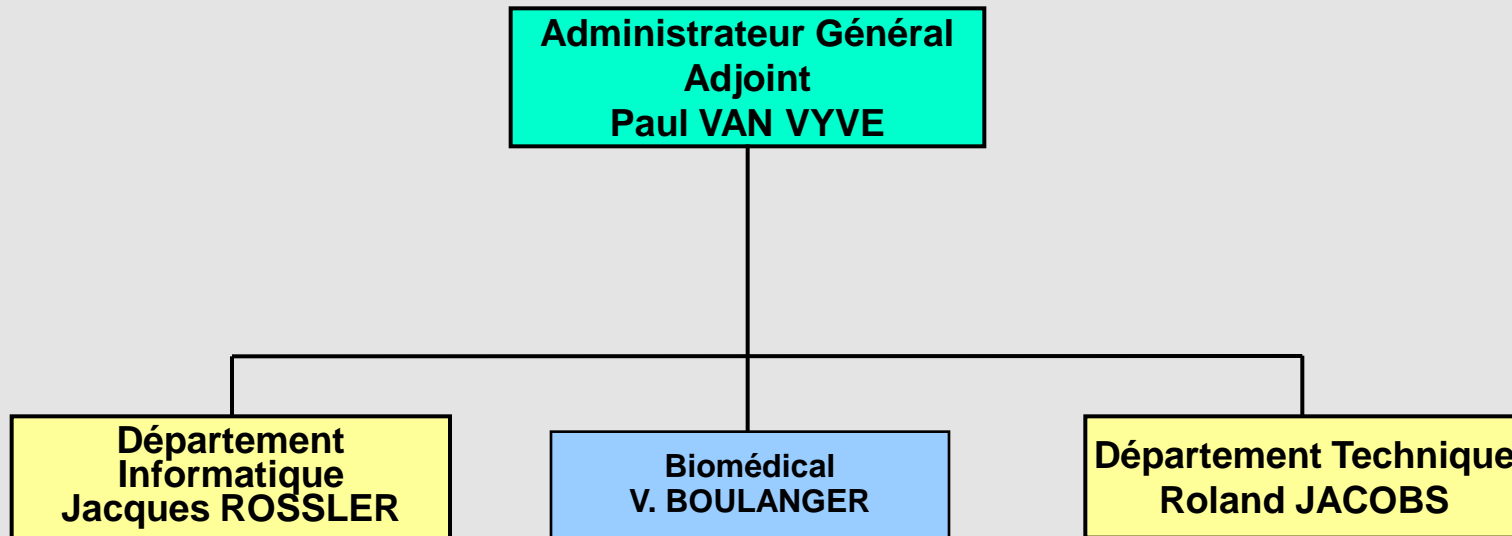
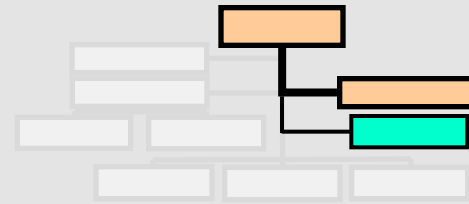
4. Administration Générale



4. Administration Générale

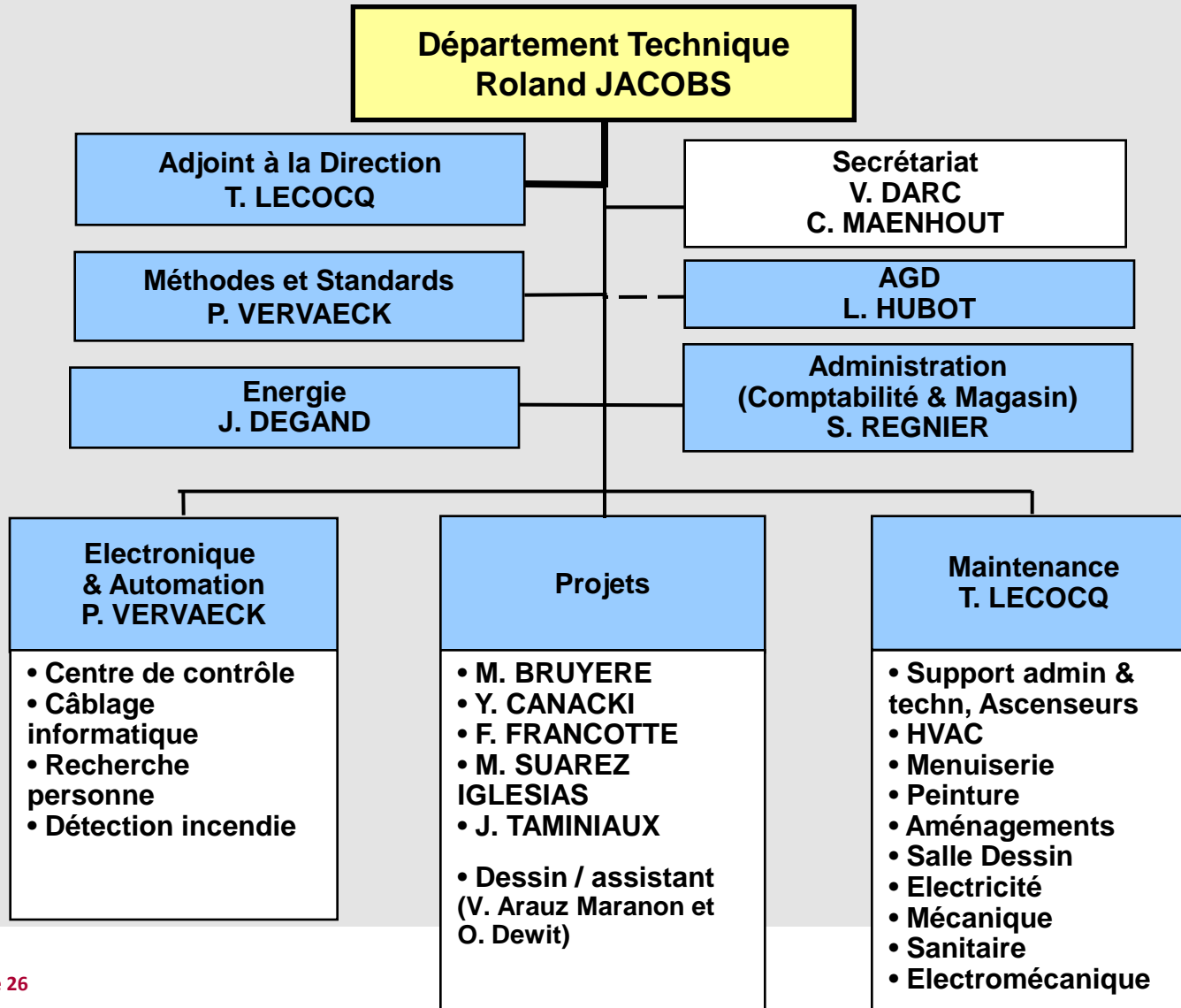
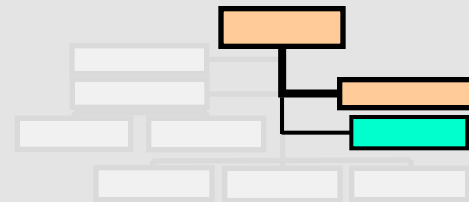


4. Administration Générale



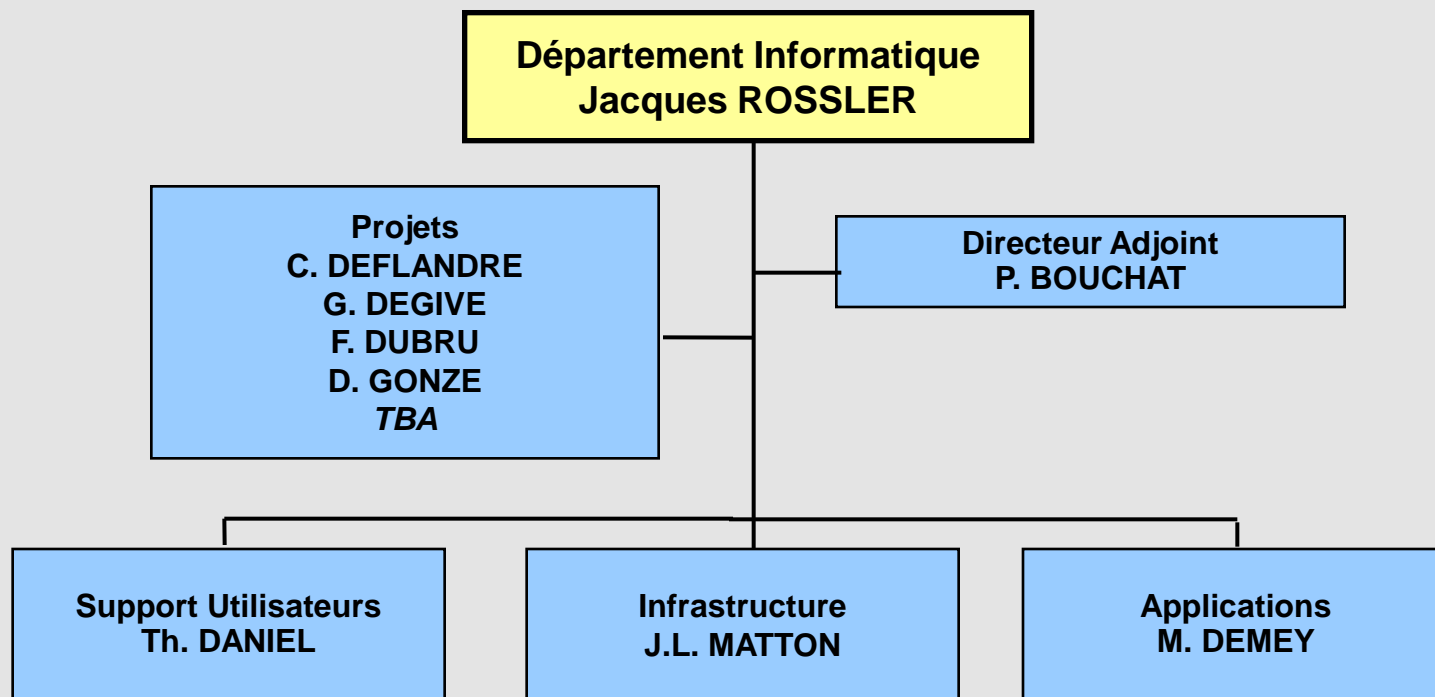
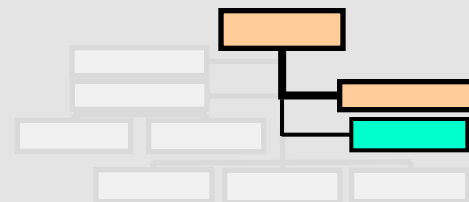
4. Administration Générale

Département Technique

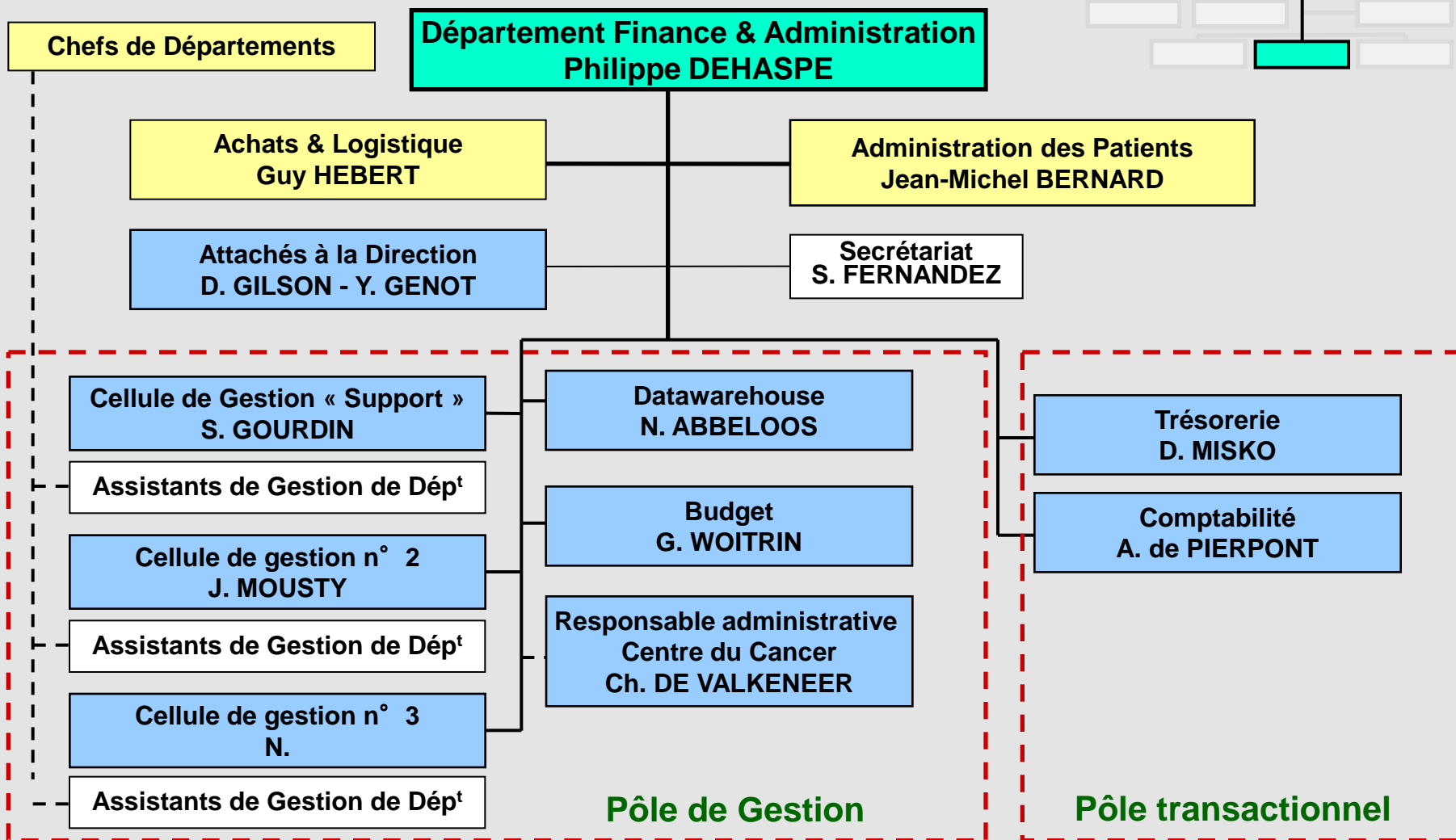


4. Administration Générale

Département Informatique

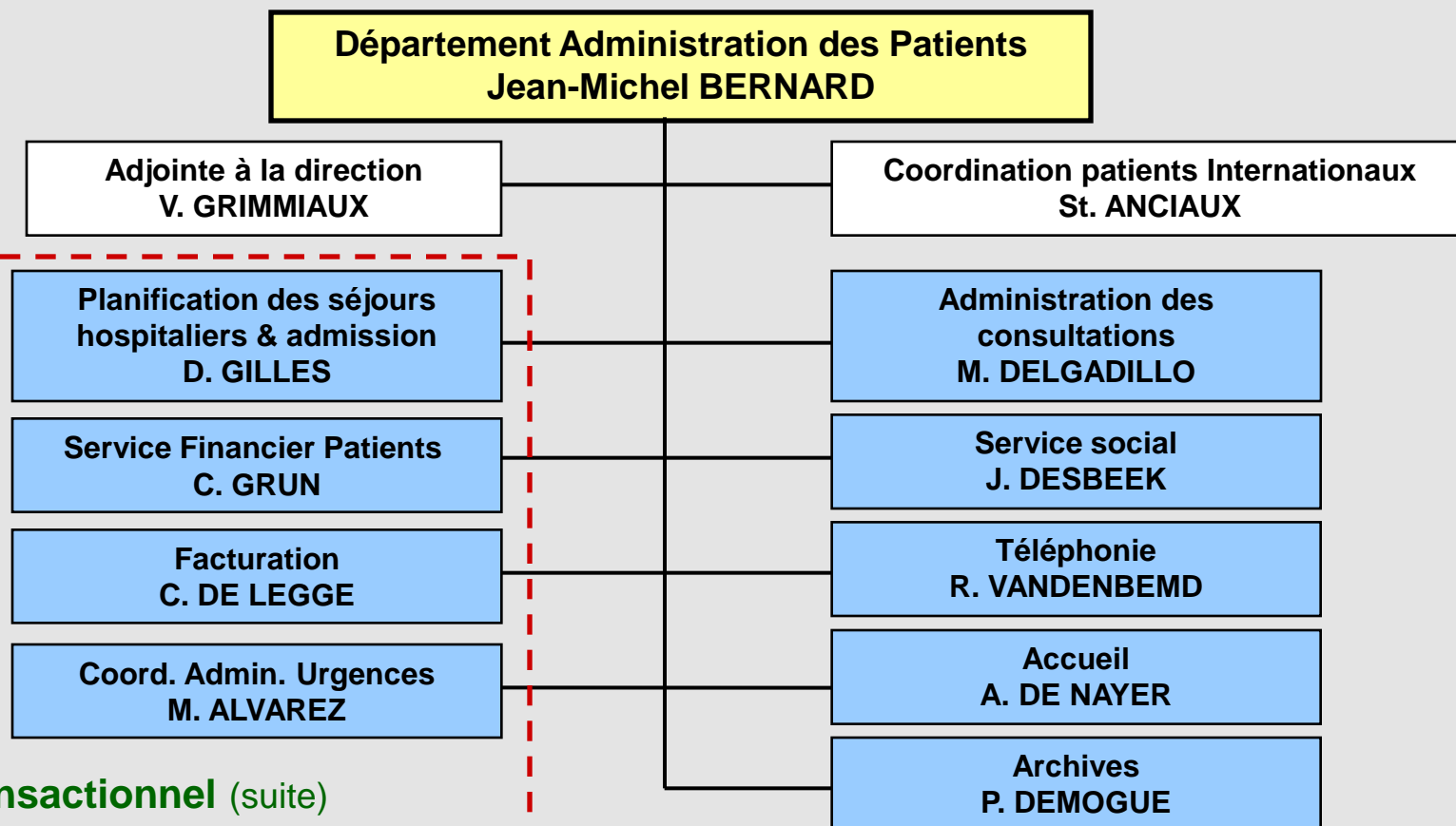
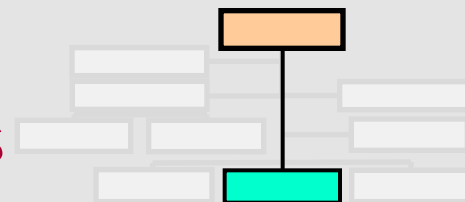


5. Finance & Administration



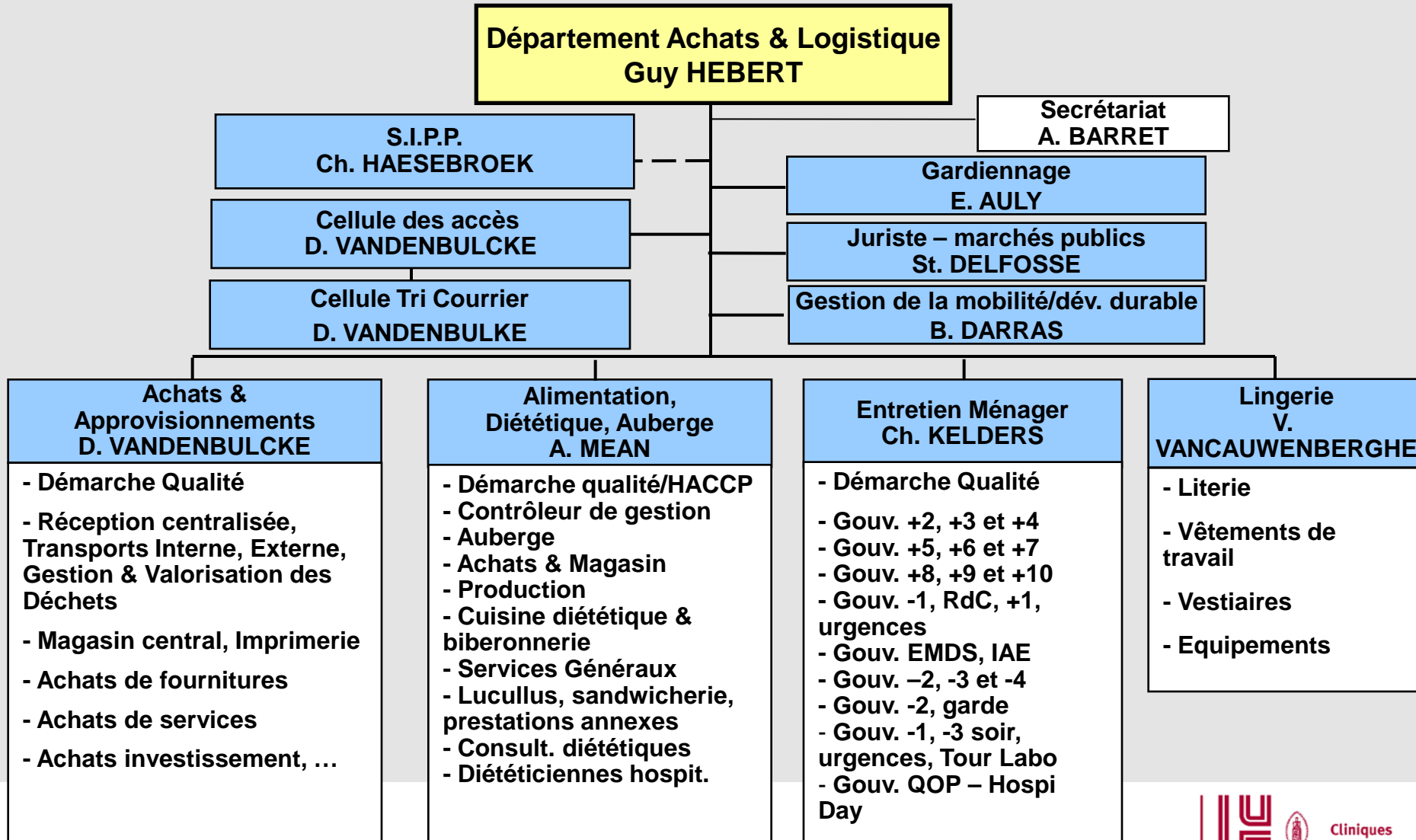
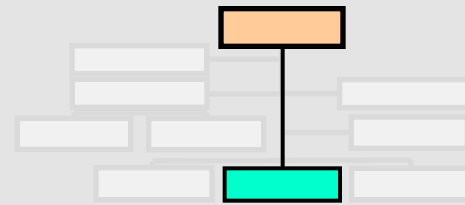
5. Finance & Administration

Département Administration des Patients

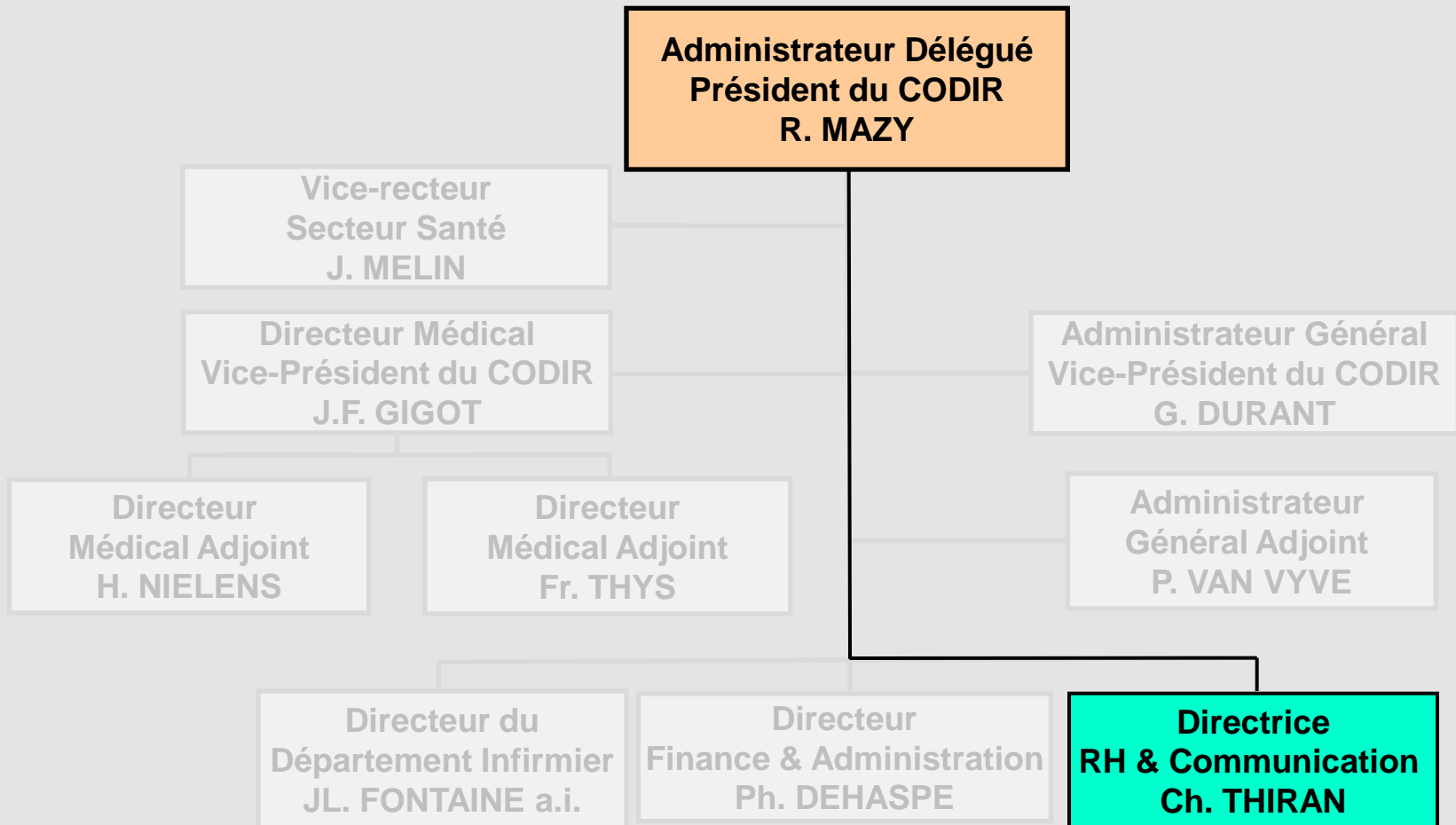
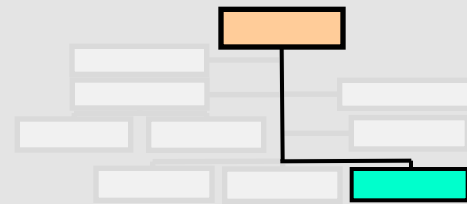


5. Finance & Administration

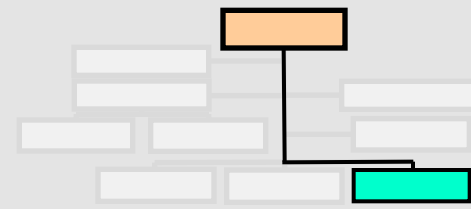
Département Achats & Logistique



6. Ressources Humaines & Communication



6. Ressources Humaines & Communication



Département Ressources Humaines & Communication
Christine THIRAN

Secrétariat
V. DANSART

Référent Système d'Information RH
P. BOLAND

Compensation & Benefits
A. VLAMYNCK

Engagements, Contrats,
Conseil Juridique en Droit du Travail
Fr. BOURLOND

Gestion du Capital Humain
Recrutement & Organisation
Ch. LAERMANS

- Recrutement « PATO »
- Recrutement & gestion des « temporaires PATO »
- Recrutement & gestion des jobistes « PATO »

Gestion du Capital Humain
Développement Professionnel
M. DURIEUX

- Points de compétence
- Formation
- Accompagnement Professionnel

Gestion Opérationnelle du Personnel, Service Social & Relations Sociales
A. DESCHAMPHELEER

- Personnel Médical
- Personnel Soignant
- Personnel « PATO »
- Accueil DRH

Communication Interne & Externe
Th. DE NAYER

- Rédactionnel
- Evénements & Relations Extérieures
- Webmaster
- Centre audiovisuel (CAV)

- Fondation Saint-Luc