

Dpt of Neurosurgery (Pr C. Raftopoulos),
Reference Center for Refractory Epilepsy (Pr K. van Rijckevorsel)
Cliniques Universitaires St-Luc, Université Catholique de Louvain.
Location: Cliniques St-Luc, salle La Verrière, Av Hippocrate 10, 1200 Brussels.

Thursday 25 Novembre

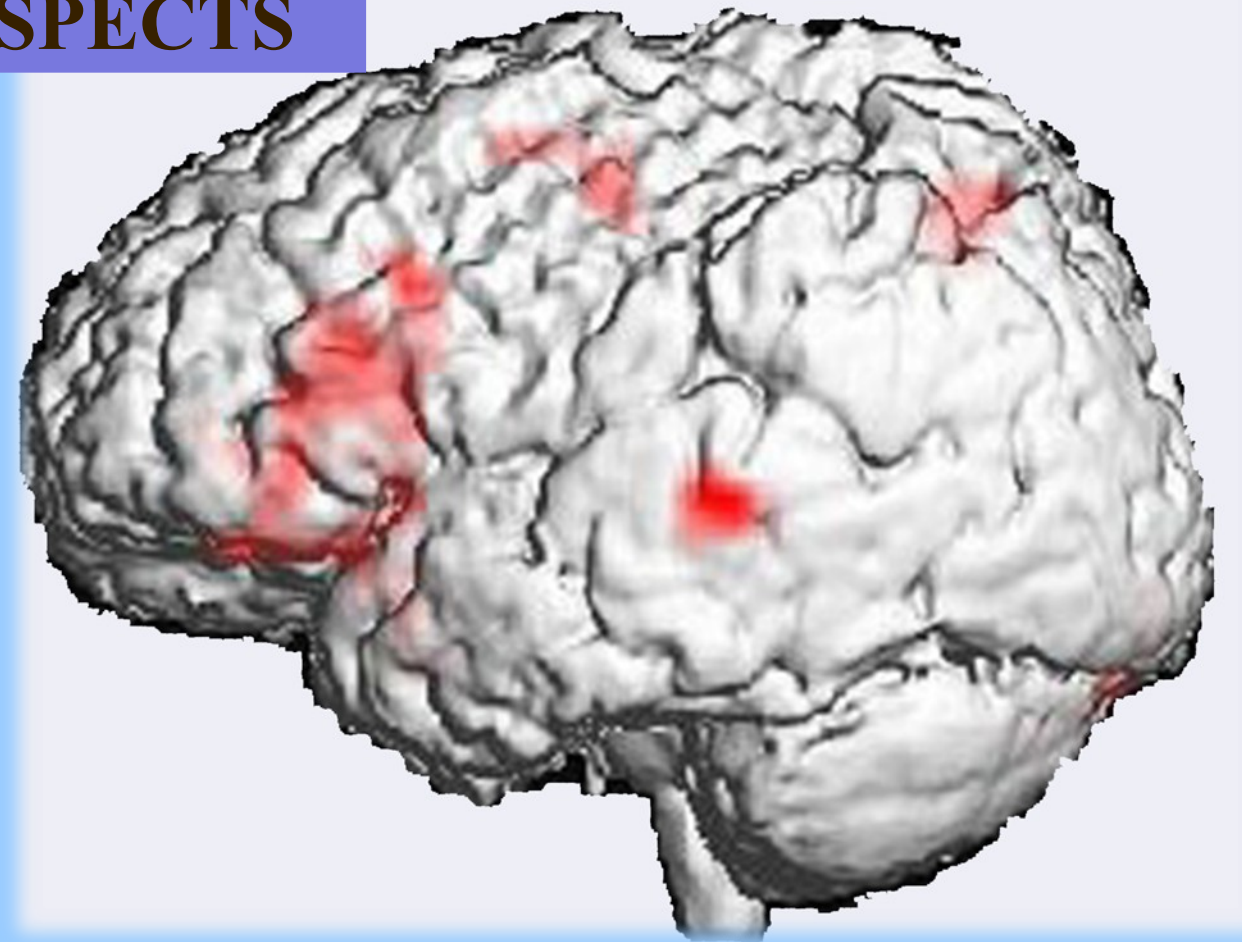
1:00-6:00 PM. ETHICAL & SOCIO-ECONOMIC ASPECTS

- Medically refractory Epilepsy in Belgium
- Patient Point of View
- General practitioner Point of View
- Neurologist Point of View

Coffee Break

- Surgeon Point of View
- National Health Insurance Point of View

Special Lecture & Tasting "Les Bourgognes"



Friday 26 Novembre

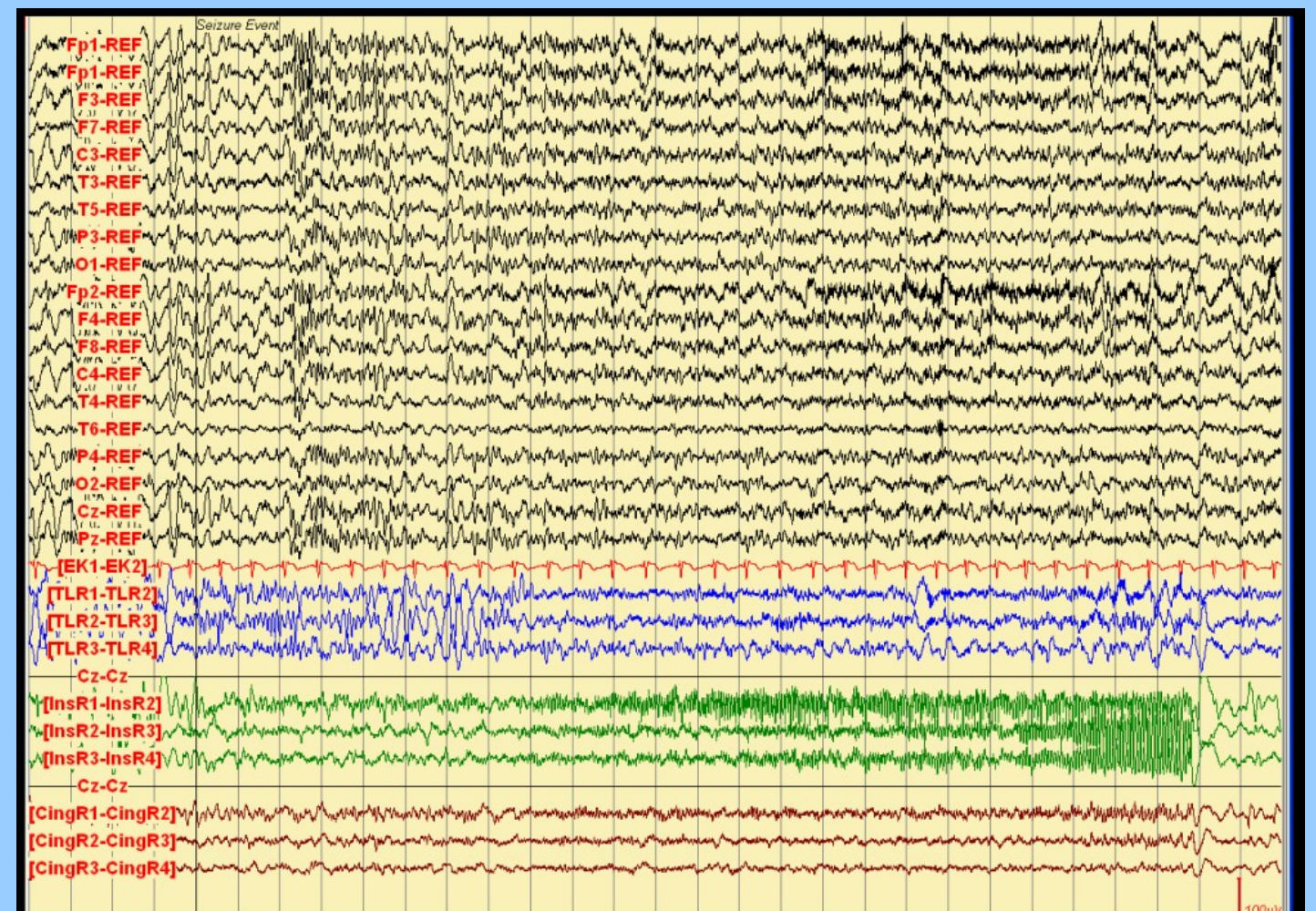
8:30-1:00 AM. CURRENT PRACTICE

- Clinical aspects and Video-EEG
- Invasive EEG
- Resection : tumoral and non-tumoral

Coffee Break

- Disconnection: lobar & hemispheric
- Disconnection: multiple subpial transections
- Vagus nerve stimulation

Lunch

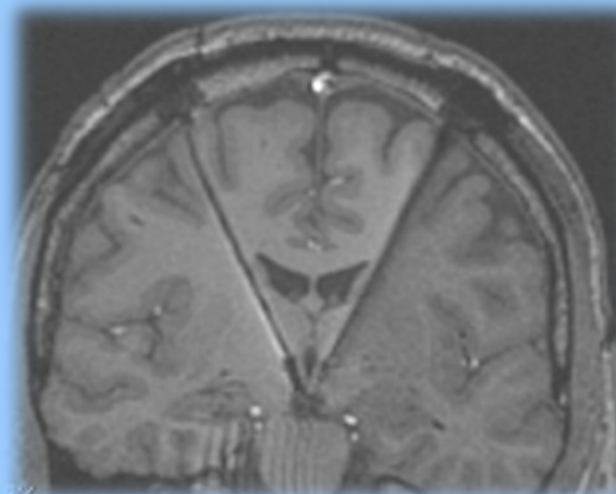


2:00-5:30 PM . CONTROVERSIAL PRESENT AND FUTURE

- New antiepileptic drugs
- Histology and epilepsy
- Multimodal imaging

Coffee Break

- Deep brain stimulation
- Magnetoencephalography (MEG)
- Genetics and epilepsy



Contact persons

J. Mester 02 764 1085 Josiane.Mester@uclouvain.be
G. Vaz jose.ribeirovaz@uclouvain.be
P. Finet Patrice.Finet@uclouvain.be

Inscription fees All the program 100 €
Only Thursday 40 €
Only Friday 60 €

*Free for medical students and trainees
Inscription required before end of October*